



**WE BELIEVE IN LIFE**

We breath Engineering.

We are certain that emotional feelings and rational insights brought together improve our daily activities.

For more than 35 years.

We care.

That's why we are experts in safety footwear engineering.

**WALKING THE FUTURE**

Our mission is to provide our clients a safer working journey every day, redefying new materials for ever more comfortable durable safety shoes, pushing workers beyond.

**COLLECTIONS**

01	SPACE ODDITY	07
02	COUNTRYSIDE	11
03	T.T.	17
04	HIGHWAY	27
05	ENERGY	33
06	CUP	36
07	HEAVY DUTY	38
08	TECH	41
09	WOMAN	49

**INFORMATION**

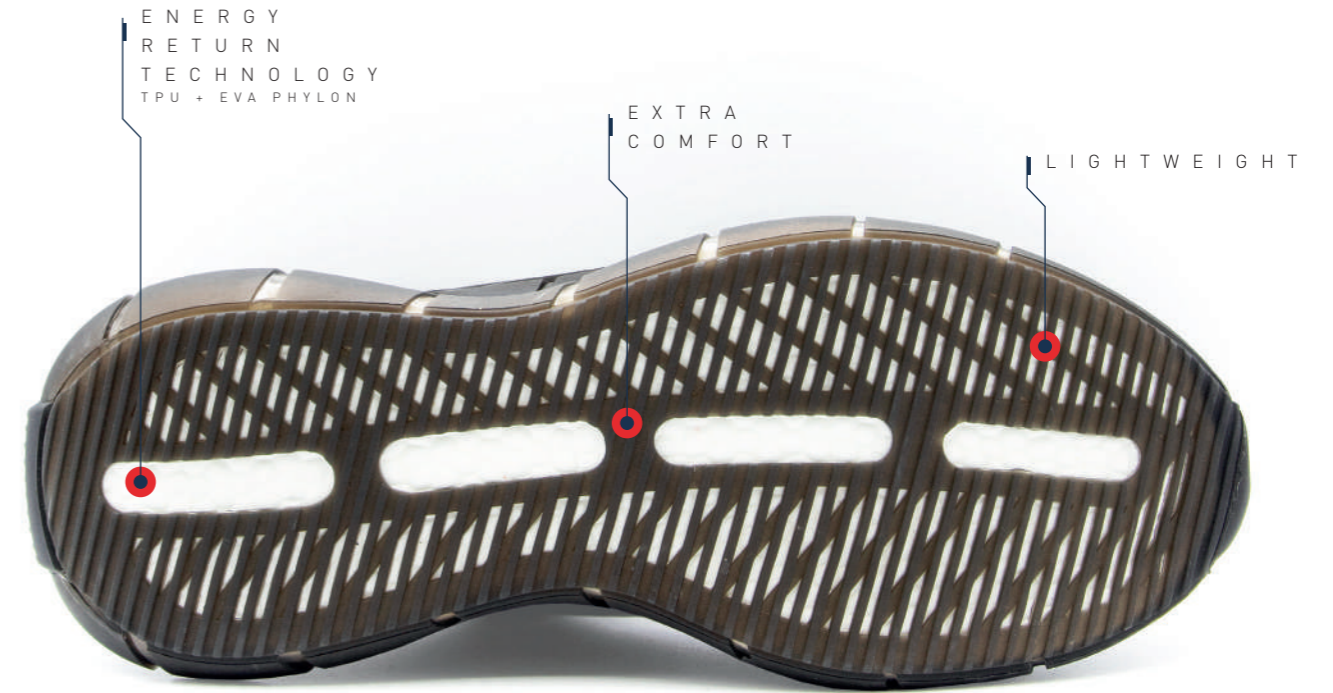
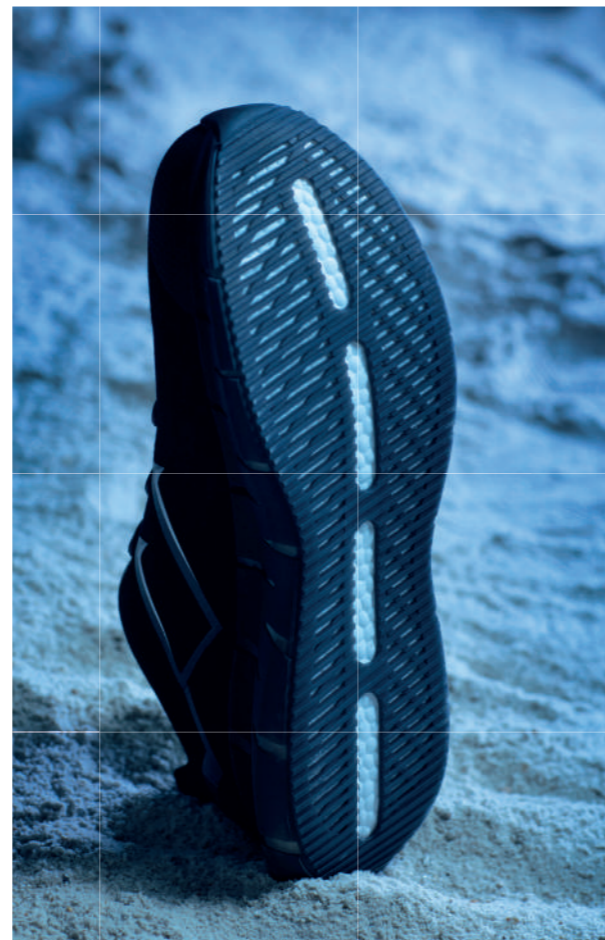
01	ACCESSORIES	54
02	SPODOS	55
03	PPE STANDARDS	57

WHAT WE CAN DO TOGETHER IS INSPIRING.  
IT'S REACHING.



IT'S VISIONARY.

01 [ SPACE ODDITY ]



[ STARDUST SILVER ]

EN ISO 20345:2011 CE S1 P WRU SRC  
EU 35-47\_UK 2 1/2-12\_MP 217 - 307

1200.20



PROTECTIVE MIDSOLE

**KEVLAR**  
(PT) Kevlar  
(ES) Kevlar  
(FR) Kevlar  
(DE) Kevlar bv  
(NL) Kevlar

PROTECTIVE TOE CAP

**COMPOSITE**  
(PT) Composite  
(ES) Composite  
(FR) Composite  
(DE) Kunststoffkappe  
(NL) Composiet

SOLE

**TPU + EVA PHYLON**  
(PT) TPU + Eva Phylon  
(ES) TPU + Eva Phylon  
(FR) TPU + Eva Phylon  
(DE) TPU + Eva Phylon  
(NL) TPU + Eva Phylon

UPPER RAW MATERIAL

**WR BREATHABLE HI-TECH MF**  
(PT) Tecnologia MF  
(ES) Tecnologia MF  
(FR) Technologie MF  
(DE) MF Technologie  
(NL) MF technologie

LINNING MATERIAL

**BLACK DRYLEX TEXTILE**  
(PT) Têxtil Drylex Preto  
(ES) Textil Drylex Negro  
(FR) Textile Drylex Noir  
(DE) Schwarz Drylex textil  
(NL) Textiel Drylex Zwart

[ STARDUST BLUE ]

EN ISO 20345:2011 CE S1 P WRU SRC  
EU 33-47\_UK 1 1/2-12\_MP 202 - 307



1200.10



PROTECTIVE MIDSOLE

**KEVLAR**  
(PT) Kevlar  
(ES) Kevlar  
(FR) Kevlar  
(DE) Kevlar  
(NL) Kevlar

PROTECTIVE TOE CAP

**COMPOSITE**  
(PT) Composite  
(ES) Composite  
(FR) Composite  
(DE) Kunststoffkappe  
(NL) Composiet

SOLE

**TPU + EVA PHYLON**  
(PT) TPU + Eva Phylon  
(ES) TPU + Eva Phylon  
(FR) TPU + Eva Phylon  
(DE) TPU + Eva Phylon  
(NL) TPU + Eva Phylon

UPPER RAW MATERIAL

**WR BREATHABLE HI-TECH MF**  
(PT) Tecnologia MF  
(ES) Tecnologia MF  
(FR) Technologie MF  
(DE) MF Technologie  
(NL) MF technologie

LINNING MATERIAL

**BLACK DRYLEX TEXTILE**  
(PT) Têxtil Drylex Preto  
(ES) Textil Drylex Negro  
(FR) Textile Drylex Noir  
(DE) Schwarz Drylex textil  
(NL) Textiel Drylex Zwart

[ STARSIGHT BLUE ]

EN ISO 20345:2011 CE S1 P WRU SRC  
EU 39-47\_UK 6-12\_MP 247 - 307



1400.10



PROTECTIVE MIDSOLE

**KEVLAR**  
(PT) Kevlar  
(ES) Kevlar  
(FR) Kevlar  
(DE) Kevlar  
(NL) Kevlar

PROTECTIVE TOE CAP

**COMPOSITE**  
(PT) Composite  
(ES) Composite  
(FR) Composite  
(DE) Kunststoffkappe  
(NL) Composiet

SOLE

**TPU + EVA PHYLON**  
(PT) TPU + Eva Phylon  
(ES) TPU + Eva Phylon  
(FR) TPU + Eva Phylon  
(DE) TPU + Eva Phylon  
(NL) TPU + Eva Phylon

UPPER RAW MATERIAL

**WR BREATHABLE HI-TECH MF**  
(PT) Tecnologia MF  
(ES) Tecnologia MF  
(FR) Technologie MF  
(DE) MF Technologie  
(NL) MF technologie

LINNING MATERIAL

**BLACK DRYLEX TEXTILE**  
(PT) Têxtil Drylex Preto  
(ES) Textil Drylex Negro  
(FR) Textile Drylex Noir  
(DE) Schwarz Drylex textil  
(NL) Textiel Drylex Zwart

[ STARLIGHT BLUE ]

EN ISO 20345:2011 CE S1 P WRU SRC  
EU 35-47\_UK 2 1/2-12\_MP 217 - 307



1200.00



PROTECTIVE MIDSOLE

**KEVLAR**  
(PT) Kevlar  
(ES) Kevlar  
(FR) Kevlar  
(DE) Kevlar  
(NL) Kevlar

PROTECTIVE TOE CAP

**COMPOSITE**  
(PT) Composite  
(ES) Composite  
(FR) Composite  
(DE) Kunststoffkappe  
(NL) Composiet

SOLE

**TPU + EVA PHYLON**  
(PT) TPU + Eva Phylon  
(ES) TPU + Eva Phylon  
(FR) TPU + Eva Phylon  
(DE) TPU + Eva Phylon  
(NL) TPU + Eva Phylon

UPPER RAW MATERIAL

**WR BREATHABLE HI-TECH MF**  
(PT) Tecnologia MF  
(ES) Tecnologia MF  
(FR) Technologie MF  
(DE) MF Technologie  
(NL) MF technologie

LINNING MATERIAL

**BLACK DRYLEX TEXTILE**  
(PT) Têxtil Drylex Preto  
(ES) Textil Drylex Negro  
(FR) Textile Drylex Noir  
(DE) Schwarz Drylex textil  
(NL) Textiel Drylex Zwart

[ STARMAN BLUE ]

EN ISO 20345:2011 CE S1 P WRU SRC  
EU 39-47\_UK 6-12\_MP 247 - 307



1600.10



PROTECTIVE MIDSOLE

**KEVLAR**  
(PT) Kevlar  
(ES) Kevlar  
(FR) Kevlar  
(DE) Kevlar  
(NL) Kevlar

PROTECTIVE TOE CAP

**COMPOSITE**  
(PT) Composite  
(ES) Composite  
(FR) Composite  
(DE) Kunststoffkappe  
(NL) Composiet

SOLE

**TPU + EVA PHYLON**  
(PT) TPU + Eva Phylon  
(ES) TPU + Eva Phylon  
(FR) TPU + Eva Phylon  
(DE) TPU + Eva Phylon  
(NL) TPU + Eva Phylon

UPPER RAW MATERIAL

**WR BREATHABLE HI-TECH MF**  
(PT) Tecnologia MF  
(ES) Tecnologia MF  
(FR) Technologie MF  
(DE) MF Technologie  
(NL) MF technologie

LINNING MATERIAL

**BLACK DRYLEX TEXTILE**  
(PT) Têxtil Drylex Preto  
(ES) Textil Drylex Negro  
(FR) Textile Drylex Noir  
(DE) Schwarz Drylex textil  
(NL) Textiel Drylex Zwart



PROFILED SOLE THAT PROVIDES TOTAL GRIP ON ANY TYPE OF SURFACE

360° MULTIPLE TRACTION SYSTEM



90° HEEL, DESIGNED TO IMPROVE MOBILITY

[ CASCADES BROWN 23 ]

EN ISO 20345:2022 CE S7L CI HI HRO SC SR  
EU 39-47\_UK 6-12\_MP 247 - 307



1024.32



PROTECTIVE MIDSOLE

**KEVLAR**  
(PT) Kevlar  
(ES) Kevlar  
(FR) Kevlar  
(DE) Kevlar  
(NL) Kevlar

PROTECTIVE TOE CAP

**FIBER GLASS**  
(PT) Fibra de vidro  
(ES) Fibra de Vidrio  
(FR) Fibre de Verre  
(DE) Glassfaser  
(NL) Glasvezel

SOLE

**DIRECT INJECTED PU + VIBRAM**  
(PT) PU Diretamente Injetado + Vibram  
(ES) PU Inyectado directo + Vibram  
(FR) PU Injecté Directement + Vibram  
(DE) Direkt Eingespritztes PU + Vibram  
(NL) Direct geïnjecteerd PU + Vibram

UPPER RAW MATERIAL

**BROWN CRAZY HORSE LEATHER**  
(PT) Pele Crazy Horse Castanha  
(ES) Cuero Crazy Horse Marrón  
(FR) Cuir Crazy Horse Marron  
(DE) Braun Crazy Horse Leder  
(NL) Bruin Crazy Horse Leer

LINNING MATERIAL

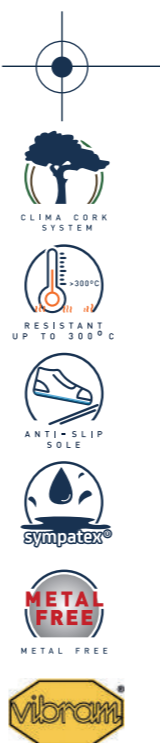
**SYMPATEX WATER-PROOF MEMBRANE**  
(PT) Membrana Impermeável Sympatex  
(ES) Membrana Impermeable Sympatex  
(FR) Membrane Impermeable Sympatex  
(DE) Sympatex Wasserdichte Membrane  
(NL) Sympatex Waterdicht Membraan

[ CASCADES GREY 23 ]

EN ISO 20345:2022 CE S7L CI HI HRO SC SR  
EU 39-47\_UK 6-12\_MP 247 - 307



1024.36



PROTECTIVE MIDSOLE

**KEVLAR**  
(PT) Kevlar  
(ES) Kevlar  
(FR) Kevlar  
(DE) Kevlar  
(NL) Kevlar

PROTECTIVE TOE CAP

**FIBER GLASS**  
(PT) Fibra de vidro  
(ES) Fibra de Vidrio  
(FR) Fibre de Verre  
(DE) Glasfaser  
(NL) Glasvezel

SOLE

**DIRECT INJECTED PU + VIBRAM**  
(PT) PU Diretamente Injetado + Vibram  
(ES) PU Inyectado directo + Vibram  
(FR) PU Injecté Directement + Vibram  
(DE) Direkt Eingespritztes PU + Vibram  
(NL) Direct geïnjecteerd PU + Vibram

UPPER RAW MATERIAL

**GREY CRAZY HORSE LEATHER**  
(PT) Pele Crazy Horse Cinza  
(ES) Cuero Crazy Horse Gris  
(FR) Cuir Crazy Horse Gris  
(DE) Grau Crazy Horse Leder  
(NL) Grijs Crazy Horse Leer

LINNING MATERIAL

**SYMPATEX WATER-PROOF MEMBRANE**  
(PT) Membrana Impermeável Sympatex  
(ES) Membrana Impermeable Sympatex  
(FR) Membrane Impermeable Sympatex  
(DE) Sympatex Wasserdichte Membrane  
(NL) Sympatex Waterdicht Membran

[ JASPER ]

EN ISO 20345:2011 CE S3 HI CI SRC  
EU 36-48\_UK 3-13\_MP 225 - 315



1225.00



PROTECTIVE MIDSOLE

**KEVLAR**  
(PT) Kevlar  
(ES) Kevlar  
(FR) Kevlar  
(DE) Kevlar  
(NL) Kevlar

PROTECTIVE TOE CAP

**FIBER GLASS**  
(PT) Fibra de vidro  
(ES) Fibra de Vidrio  
(FR) Fibre de Verre  
(DE) Glasfaser  
(NL) Glasvezel

SOLE

**DOUBLE DENSITY PU**  
(PT) Dupla Densidade PU  
(ES) Doble Densidade PU  
(FR) Double Densité PU  
(DE) Zweikomponenten PU  
(NL) Tweekomponenten PU

UPPER RAW MATERIAL

**BLACK NUBUCK LEATHER**  
(PT) Pele Nubuck Preto  
(ES) Cuero Nubuck Negro  
(FR) Cuir Nubuck Noir  
(DE) Schwarz Nubuck Leder  
(NL) Zwart Nubuckleer

LINNING MATERIAL

**BLUE DRYLEX TEXTILE**  
(PT) Têxtil Drylex Azul  
(ES) Textil Drylex Azul  
(FR) Textile Drylex Bleu  
(DE) Blau Drylex textil  
(NL) Textiel Drylex Blauw



1025.00

[ CANYON BLACK ]

EN ISO 20345:2011 CE S3 HI CI SRC  
EU 36-48\_UK 3-13\_MP 225 - 315



PROTECTIVE MIDSOLE

**KEVLAR**  
(PT) Kevlar  
(ES) Kevlar  
(FR) Kevlar  
(DE) Kevlar  
(NL) Kevlar

PROTECTIVE TOE CAP

**FIBER GLASS**  
(PT) Fibra de vidro  
(ES) Fibra de Vidrio  
(FR) Fibre de Verre  
(DE) Glasfaser  
(NL) Glasvezel

SOLE

**DOUBLE DENSITY PU**  
(PT) Dupla Densidade PU  
(ES) Doble Densidade PU  
(FR) Double Densité PU  
(DE) Zweikomponenten PU  
(NL) Tweekomponenten PU

UPPER RAW MATERIAL

**BLACK NUBUCK LEATHER**  
(PT) Pele Nubuck Preto  
(ES) Cuero Nubuck Negro  
(FR) Cuir Nubuck Noir  
(DE) Schwarz Nubuck Leder  
(NL) Zwart Nubuckleer

LINNING MATERIAL

**BLUE DRYLEX TEXTILE**  
(PT) Têxtil Drylex Azul  
(ES) Textil Drylex Azul  
(FR) Textile Drylex Bleu  
(DE) Blau Drylex textil  
(NL) Textiel Drylex Blauw

[ SNOWMASS ]

EN ISO 20345:2011 CE S3 HI CI SRC WR  
EU 36-48\_UK 3-13\_MP 225 - 315



1025.10



[ YOSEMITE ]

EN ISO 20345:2011 CE S3 HI CI SRC  
EU 39-48\_UK 6-13\_MP 247 - 315



1026.42



PROTECTIVE MIDSOLE

**KEVLAR**  
(PT) Kevlar  
(ES) Kevlar  
(FR) Kevlar  
(DE) Kevlar  
(NL) Kevlar

PROTECTIVE TOE CAP

**FIBER GLASS**  
(PT) Fibra de vidro  
(ES) Fibra de Vidrio  
(FR) Fibre de Verre  
(DE) Glasfaser  
(NL) Glasvezel

SOLE

**DOUBLE DENSITY PU**  
(PT) Dupla Densidade PU  
(ES) Doble Densidade PU  
(FR) Double Densité PU  
(DE) Zweikomponenten PU  
(NL) Tweekomponenten PU

UPPER RAW MATERIAL

**BLACK NUBUCK LEATHER**  
(PT) Pele Nubuck Preto  
(ES) Cuero Nubuck Negro  
(FR) Cuir Nubuck Noir  
(DE) Schwarz Nubuck Leder  
(NL) Zwart Nubuckleer

LINNING MATERIAL

**AQUATEX WATER-PROOF MEMBRANE**  
(PT) Membrana Impermeável Aquatex  
(ES) Membrana Impermeable Aquatex  
(FR) Membrane Impermeable Aquatex  
(DE) Aquatex Wasserdichte Membrane  
(NL) Aquatex Waterdicht Membraan

PROTECTIVE MIDSOLE

**KEVLAR**  
(PT) Kevlar  
(ES) Kevlar  
(FR) Kevlar  
(DE) Kevlar  
(NL) Kevlar

PROTECTIVE TOE CAP

**FIBER GLASS**  
(PT) Fibra de vidro  
(ES) Fibra de Vidrio  
(FR) Fibre de Verre  
(DE) Glasfaser  
(NL) Glasvezel

SOLE

**DOUBLE DENSITY PU**  
(PT) Dupla Densidade PU  
(ES) Doble Densidade PU  
(FR) Double Densité PU  
(DE) Zweikomponenten PU  
(NL) Tweekomponenten PU

UPPER RAW MATERIAL

**WR FLOATER COGNAC**  
(PT) WR Floater Cognac  
(ES) Coñac Floater WR  
(FR) Cuir Pleine Fleur WR Cognac  
(DE) WR Floater Cognac  
(NL) WR Floater Cognac

LINNING MATERIAL

**BREATHABLE DRYLEX TEXTILE**  
(PT) Têxtil Dri-Tex  
(ES) Textil Dri-Tex  
(FR) Textile Dri-Tex Bleu  
(DE) Dri-Tex textil  
(NL) Textiel Dri-Tex

[ YELLOWSTONE ]

EN ISO 20345:2011 CE S3 HI CI SRC WR  
EU 39-48\_UK 6-13\_MP 247 - 315



1025.15



INTERNAL ZIP

PROTECTIVE MIDSOLE

**KEVLAR**  
(PT) Kevlar  
(ES) Kevlar  
(FR) Kevlar  
(DE) Kevlar  
(NL) Kevlar

PROTECTIVE TOE CAP

**FIBER GLASS**  
(PT) Fibra de vidro  
(ES) Fibra de Vidrio  
(FR) Fibre de Verre  
(DE) Glasfaser  
(NL) Glasvezel

SOLE

**DOUBLE DENSITY PU**  
(PT) Dupla Densidade PU  
(ES) Doble Densidade PU  
(FR) Double Densité PU  
(DE) Zweikomponenten PU  
(NL) Tweekomponenten PU

UPPER RAW MATERIAL

**BLACK NUBUCK LEATHER**  
(PT) Pele Nubuck Preto  
(ES) Cuero Nubuck Negro  
(FR) Cuir Nubuck Noir  
(DE) Schwarz Nubuck Leder  
(NL) Zwart Nubuckleer

LINNING MATERIAL

**AQUATEX WATER-PROOF MEMBRANE**  
(PT) Membrana Impermeável Aquatex  
(ES) Membrana Impermeable Aquatex  
(FR) Membrane Impermeable Aquatex  
(DE) Aquatex Wasserdichte Membrane  
(NL) Aquatex Waterdicht Membraan

PROTECTIVE MIDSOLE

**KEVLAR**  
(PT) Kevlar  
(ES) Kevlar  
(FR) Kevlar  
(DE) Kevlar  
(NL) Kevlar

PROTECTIVE TOE CAP

**FIBER GLASS**  
(PT) Fibra de vidro  
(ES) Fibra de Vidrio  
(FR) Fibre de Verre  
(DE) Glasfaser  
(NL) Glasvezel

SOLE

**DOUBLE DENSITY PU**  
(PT) Dupla Densidade PU  
(ES) Doble Densidade PU  
(FR) Double Densité PU  
(DE) Zweikomponenten PU  
(NL) Tweekomponenten PU

UPPER RAW MATERIAL

**NUBUCK LEATHER**  
(PT) Pele Nubuck  
(ES) Cuero Nubuck  
(FR) Cuir Nubuck  
(DE) Nubuck Leder  
(NL) Nubuckleer

LINNING MATERIAL

**AQUATEX WATER-PROOF MEMBRANE**  
(PT) Membrana Impermeável Aquatex  
(ES) Membrana Impermeable Aquatex  
(FR) Membrane Impermeable Aquatex  
(DE) Aquatex Wasserdichte Membrane  
(NL) Aquatex Waterdicht Membraan





SPECIALLY DESIGNED FOR  
GREATER CONTACT BETWEEN  
SOLE AND THE GROUND

DIMINISHED FATIGUE,  
FASCITIS AND DIGITAL  
CLAW INCREASING COMFORT



[CHEWIE 22]

EN ISO 20345:2011 CE S3 SRC  
EU 35-48\_UK 2 1/2-13\_MP 217 - 315

1203.11



PROTECTIVE  
MIDSOLE

**KEVLAR**  
(PT) Kevlar  
(ES) Kevlar  
(FR) Kevlar  
(DE) Kevlar  
(NL) Kevlar

PROTECTIVE  
TOE CAP

**COMPOSITE**  
(PT) Composite  
(ES) Composite  
(FR) Composite  
(DE) Kunststoffkappe  
(NL) Composit

SOLE

**DOUBLE DENSITY  
PU**  
(PT) Dupla Densidade PU  
(ES) Doble Densidade PU  
(FR) Double Densité PU  
(DE) Zweikomponenten PU  
(NL) Tweekomponenten PU

UPPER RAW  
MATERIAL

**BREATHABLE K3D  
TEXTILE**  
(PT) Têxtil K3D  
(ES) Têxtil K3D  
(FR) Têxtil K3D  
(DE) K3D Textil  
(NL) Textiel K3D

LINNING  
MATERIAL

**BLUE DRYLEX  
TEXTILE**  
(PT) Têxtil Drylex Azul  
(ES) Têxtil Drylex Azul  
(FR) Têxtil Drylex Bleu  
(DE) Blau Drylex textil  
(NL) Textiel Drylex Blauw



[ LYNX BLACK ]

EN ISO 20345:2011 CE S3 SRC  
EU 35-48\_UK 2 1/2-13\_MP 217 - 315

1257.50



PROTECTIVE MIDSOLE

**KEVLAR**  
(PT) Kevlar  
(ES) Kevlar  
(FR) Kevlar  
(DE) Kevlar  
(NL) Kevlar

PROTECTIVE TOE CAP

**COMPOSITE**  
(PT) Composite  
(ES) Composite  
(FR) Composite  
(DE) Kunststoffkappe  
(NL) Composiet

SOLE

**DOUBLE DENSITY PU**  
(PT) Dupla Densidade PU  
(ES) Doble Densidade PU  
(FR) Double Densité PU  
(DE) Zweikomponenten PU  
(NL) Tweekomponenten PU

UPPER RAW MATERIAL

**WR BREATHABLE HI-TECH MF**  
(PT) Tecnologia MF  
(ES) Tecnología MF  
(FR) Technologie MF  
(DE) MF Technologie  
(NL) MF technologie

LINNING MATERIAL

**BLACK DRYLEX TEXTILE**  
(PT) Têxtil Drylex Preto  
(ES) Têxtil Drylex Negro  
(FR) Textile Drylex Noir  
(DE) Schwarz Drylex textil  
(NL) Textiel Drylex Zwart

1203.17



[ LUKE 22 ]

EN ISO 20345:2011 CE S3 SRC  
EU 35-48\_UK 2 1/2-13\_MP 217 - 315



PROTECTIVE MIDSOLE

**KEVLAR**  
(PT) Kevlar  
(ES) Kevlar  
(FR) Kevlar  
(DE) Kevlar  
(NL) Kevlar

PROTECTIVE TOE CAP

**COMPOSITE**  
(PT) Composite  
(ES) Composite  
(FR) Composite  
(DE) Kunststoffkappe  
(NL) Composiet

SOLE

**DOUBLE DENSITY PU**  
(PT) Dupla Densidade PU  
(ES) Doble Densidade PU  
(FR) Double Densité PU  
(DE) Zweikomponenten PU  
(NL) Tweekomponenten PU

UPPER RAW MATERIAL

**BREATHABLE K3D TEXTILE**  
(PT) Têxtil K3D  
(ES) Têxtil K3D  
(FR) Textil K3D  
(DE) K3D Textil  
(NL) Textiel K3D

LINNING MATERIAL

**ORANGE DRYLEX TEXTILE**  
(PT) Têxtil Drylex Laranja  
(ES) Têxtil Drylex Naranja  
(FR) Textile Drylex Orange  
(DE) OrangeDrylex textil  
(NL) Textiel Drylex Oranje

1257.51



[ LYNX BLUE ]

EN ISO 20345:2011 CE S3 SRC  
EU 35-48\_UK 2 1/2-13\_MP 217 - 315



PROTECTIVE MIDSOLE

**KEVLAR**  
(PT) Kevlar  
(ES) Kevlar  
(FR) Kevlar  
(DE) Kevlar  
(NL) Kevlar

PROTECTIVE TOE CAP

**COMPOSITE**  
(PT) Composite  
(ES) Composite  
(FR) Composite  
(DE) Kunststoffkappe  
(NL) Composiet

SOLE

**DOUBLE DENSITY PU**  
(PT) Dupla Densidade PU  
(ES) Doble Densidade PU  
(FR) Double Densité PU  
(DE) Zweikomponenten PU  
(NL) Tweekomponenten PU

UPPER RAW MATERIAL

**WR BREATHABLE HI-TECH MF**  
(PT) Tecnologia MF  
(ES) Tecnología MF  
(FR) Technologie MF  
(DE) MF Technologie  
(NL) MF technologie

LINNING MATERIAL

**BLUE DRYLEX TEXTILE**  
(PT) Têxtil Drylex Azul  
(ES) Têxtil Drylex Azul  
(FR) Textile Drylex Bleu  
(DE) Blau Drylex textil  
(NL) Textiel Drylex Blauw

[LYNX RED]

EN ISO 20345:2011 CE S3 SRC  
EU 35-48\_UK 2 1/2-13\_MP 217 - 315



1257.54



PROTECTIVE MIDSOLE

**KEVLAR**  
(PT) Kevlar  
(ES) Kevlar  
(FR) Kevlar  
(DE) Kevlar  
(NL) Kevlar

PROTECTIVE TOE CAP

**COMPOSITE**  
(PT) Composite  
(ES) Composite  
(FR) Composite  
(DE) Kunststoffkappe  
(NL) Composiet

SOLE

**DOUBLE DENSITY PU**  
(PT) Dupla Densidade PU  
(ES) Doble Densidade PU  
(FR) Double Densité PU  
(DE) Zweikomponenten PU  
(NL) Tweekomponenten PU

UPPER RAW MATERIAL

**WR BREATHABLE HI-TECH MF**  
(PT) Tecnologia MF  
(ES) Tecnología MF  
(FR) Technologie MF  
(DE) MF Technologie  
(NL) MF technologie

LINING MATERIAL

**RED DRYLEX TEXTILE**  
(PT) Têxtil Drylex Vermelho  
(ES) Textil Drylex Rojo  
(FR) Textile Drylex Rouge  
(DE) Rot Drylex textil  
(NL) Textiel Drylex Rood

[YODA BROWN]

EN ISO 20345:2022 CE S3L CI HI SR  
EU 35-48\_UK 2 1/2-13\_MP 217 - 315



1204.02



PROTECTIVE MIDSOLE

**KEVLAR**  
(PT) Kevlar  
(ES) Kevlar  
(FR) Kevlar  
(DE) Kevlar  
(NL) Kevlar

PROTECTIVE TOE CAP

**COMPOSITE**  
(PT) Composite  
(ES) Composite  
(FR) Composite  
(DE) Kunststoffkappe  
(NL) Composiet

SOLE

**DIRECT INJECTED PU + RUBBER**  
(PT) PU Diretamente Injetado + Borracha  
(ES) PU inyectado directo + Caucho  
(FR) PU Injecté Directement + Nitril  
(DE) Direkt Eingespritztes PU + Gummi  
(NL) Direct geïnjecteerd PU + Rubber

UPPER RAW MATERIAL

**BROWN NUBUCK WR LEATHER**  
(PT) Pele Nubuck Castanha WR  
(ES) Cuero Nubuck Marrón WR  
(FR) Cuir Nubuck Marron WR  
(DE) Braun Nubuck Leder WR  
(NL) Bruin Nubuckleer WR

LINING MATERIAL

**BLACK DRYLEX TEXTILE**  
(PT) Têxtil Drylex Preto  
(ES) Textil Drylex Negro  
(FR) Textile Drylex Noir  
(DE) Schwarz Drylex textil  
(NL) Textiel Drylex Zwart

[ARA]

EN ISO 20345:2011 CE S1 P SRC  
EU 35-48\_UK 2 1/2-13\_MP 217 - 315



1257.61



PROTECTIVE MIDSOLE

**KEVLAR**  
(PT) Kevlar  
(ES) Kevlar  
(FR) Kevlar  
(DE) Kevlar  
(NL) Kevlar

PROTECTIVE TOE CAP

**COMPOSITE**  
(PT) Composite  
(ES) Composite  
(FR) Composite  
(DE) Kunststoffkappe  
(NL) Composiet

SOLE

**DOUBLE DENSITY PU**  
(PT) Dupla Densidade PU  
(ES) Doble Densidade PU  
(FR) Double Densité PU  
(DE) Zweikomponenten PU  
(NL) Tweekomponenten PU

UPPER RAW MATERIAL

**WR BREATHABLE HI-TECH MF**  
(PT) Tecnologia MF  
(ES) Tecnología MF  
(FR) Technologie MF  
(DE) MF Technologie  
(NL) MF technologie

LINING MATERIAL

**BLUE DRYLEX TEXTILE**  
(PT) Têxtil Drylex Azul  
(ES) Textil Drylex Azul  
(FR) Textile Drylex Bleu  
(DE) Blau Drylex textil  
(NL) Textiel Drylex Blauw

[LANDO BROWN]

EN ISO 20345:2022 CE S3L CI HI SR  
EU 35-48\_UK 2 1/2-13\_MP 217 - 315



1004.02



PROTECTIVE MIDSOLE

**KEVLAR**  
(PT) Kevlar  
(ES) Kevlar  
(FR) Kevlar  
(DE) Kevlar  
(NL) Kevlar

PROTECTIVE TOE CAP

**COMPOSITE**  
(PT) Composite  
(ES) Composite  
(FR) Composite  
(DE) Kunststoffkappe  
(NL) Composiet

SOLE

**DIRECT INJECTED PU + RUBBER**  
(PT) PU Diretamente Injetado + Borracha  
(ES) PU inyectado directo + Caucho  
(FR) PU Injecté Directement + Nitril  
(DE) Direkt Eingespritztes PU + Gummi  
(NL) Direct geïnjecteerd PU + Rubber

UPPER RAW MATERIAL

**BROWN NUBUCK WR LEATHER**  
(PT) Pele Nubuck Castanha WR  
(ES) Cuero Nubuck Marrón WR  
(FR) Cuir Nubuck Marron WR  
(DE) Braun Nubuck Leder WR  
(NL) Bruin Nubuckleer WR

LINING MATERIAL

**BLACK DRYLEX TEXTILE**  
(PT) Têxtil Drylex Preto  
(ES) Textil Drylex Negro  
(FR) Textile Drylex Noir  
(DE) Schwarz Drylex textil  
(NL) Textiel Drylex Zwart

[VADER BLACK]

EN ISO 20345:2022 CE S3L CI HI SR  
EU 35-48\_UK 2 1/2-13\_MP 217 - 315



1204.00



PROTECTIVE MIDSOLE

**KEVLAR**  
(PT) Kevlar  
(ES) Kevlar  
(FR) Kevlar  
(DE) Kevlar  
(NL) Kevlar

PROTECTIVE TOE CAP

**COMPOSITE**  
(PT) Composite  
(ES) Composite  
(FR) Composite  
(DE) Kunststoffkappe  
(NL) Composiet

SOLE

**DIRECT INJECTED PU + RUBBER**  
(PT) PU Diretamente Injetado + Borracha  
(ES) PU inyectado directo + Caucho  
(FR) PU Injecté Directement + Nitril  
(DE) Direkt Eingespritztes PU + Gummi  
(NL) Direct geïnjecteerd PU + Rubber

UPPER RAW MATERIAL

**BLACK FULL GRAIN LEATHER**  
(PT) Pele de Flor Integral Preta  
(ES) Cuero Full Grain Negro  
(FR) Cuir Pleine Fleur Grainé Noir  
(DE) Schwarz Glattleder  
(NL) Zwart Volnerfleer

LINING MATERIAL

**GREY VADICONFORT TEXTILE**  
(PT) Têxtil Cinza Vadiconfort  
(ES) Textil Gris Vadiconfort  
(FR) Textile Vadiconfort Gris  
(DE) Grau Vadiconfort textil  
(NL) Textiel Vadiconfort

1111.23

[VAGOS]

EN ISO 20345:2022 CE S2 SR  
EU 35-47\_UK 2 1/2-12\_MP 217 - 307



PROTECTIVE MIDSOLE

-  
(PT) -  
(ES) -  
(FR) -  
(DE) -  
(NL) -

PROTECTIVE TOE CAP

**COMPOSITE**  
(PT) Composite  
(ES) Composite  
(FR) Composite  
(DE) Kunststoffkappe  
(NL) Composiet

SOLE

**DOUBLE DENSITY PU**  
(PT) Dupla Densidade PU  
(ES) Doble Densidade PU  
(FR) Double Densité PU  
(DE) Zweikomponenten PU  
(NL) Tweekomponenten PU

UPPER RAW MATERIAL

**VEGAN MICROFIBER**  
(PT) Microfibra Vegan  
(ES) Microfibra Vegan  
(FR) Microfibre Vegan  
(DE) Mikrofaser Vegan  
(NL) Microvezel Vegan

LINING MATERIAL

**GREY DRYLEX TEXTILE**  
(PT) Têxtil Drylex Cinza  
(ES) Textil Drylex Gris  
(FR) Textile Drylex Gris  
(DE) Grau Drylex textil  
(NL) Textiel Drylex Grijs

1004.00



[KENOBI]

EN ISO 20345:2022 CE S3L CI HI SR  
EU 35-48\_UK 2 1/2-13\_MP 217 - 315



1111.30

PROTECTIVE MIDSOLE

**KEVLAR**  
(PT) Kevlar  
(ES) Kevlar  
(FR) Kevlar  
(DE) Kevlar  
(NL) Kevlar

PROTECTIVE TOE CAP

**COMPOSITE**  
(PT) Composite  
(ES) Composite  
(FR) Composite  
(DE) Kunststoffkappe  
(NL) Composiet

SOLE

**DIRECT INJECTED PU + RUBBER**  
(PT) PU Diretamente Injetado + Borracha  
(ES) PU inyectado directo + Caucho  
(FR) PU Injecté Directement + Nitril  
(DE) Direkt Eingespritztes PU + Gummi  
(NL) Direct geïnjecteerd PU + Rubber

UPPER RAW MATERIAL

**BLACK FULL GRAIN LEATHER**  
(PT) Pele de Flor Integral Preta  
(ES) Cuero Full Grain Negro  
(FR) Cuir Pleine Fleur Grainé Noir  
(DE) Schwarz Glattleder  
(NL) Zwart Volnerfleer

LINING MATERIAL

**GREY VADICONFORT TEXTILE**  
(PT) Têxtil Cinza Vadiconfort  
(ES) Textil Gris Vadiconfort  
(FR) Textile Vadiconfort Gris  
(DE) Grau Vadiconfort textil  
(NL) Textiel Vadiconfort

PROTECTIVE MIDSOLE

**KEVLAR**  
(PT) Kevlar  
(ES) Kevlar  
(FR) Kevlar  
(DE) Kevlar  
(NL) Kevlar

PROTECTIVE TOE CAP

**COMPOSITE**  
(PT) Composite  
(ES) Composite  
(FR) Composite  
(DE) Kunststoffkappe  
(NL) Composiet

SOLE

**DOUBLE DENSITY PU**  
(PT) Dupla Densidade PU  
(ES) Doble Densidade PU  
(FR) Double Densité PU  
(DE) Zweikomponenten PU  
(NL) Tweekomponenten PU

UPPER RAW MATERIAL

**VEGAN MICROFIBER**  
(PT) Microfibra Vegan  
(ES) Microfibra Vegan  
(FR) Microfibre Vegan  
(DE) Mikrofaser Vegan  
(NL) Microvezel Vegan

LINING MATERIAL

**GREY DRYLEX TEXTILE**  
(PT) Têxtil Drylex Cinza  
(ES) Textil Drylex Gris  
(FR) Textile Drylex Gris  
(DE) Grau Drylex textil  
(NL) Textiel Drylex Grijs



[TOCHA 22]

EN ISO 20345:2022 CE S3 SR  
EU 35-47\_UK 2 1/2-12\_MP 217 - 307



**XXL**  
49 - 53

[VADER XXL]

EN ISO 20345:2022 CE S3 SRA  
EU 48-53\_UK 14-17\_MP 322 - 352



METAL FREE

1204.30



PROTECTIVE  
MIDSOLE

**KEVLAR**  
(PT) Kevlar  
(ES) Kevlar  
(FR) Kevlar  
(DE) Kevlar  
(NL) Kevlar

PROTECTIVE  
TOE CAP

**COMPOSITE**  
(PT) Composite  
(ES) Composite  
(FR) Composite  
(DE) Kunststoffkappe  
(NL) Composiet

SOLE

**DOUBLE DENSITY  
PU**  
(PT) Dupla Densidade PU  
(ES) Doble Densidade PU  
(FR) Double Densité PU  
(DE) Zweikomponenten PU  
(NL) Tweekomponenten PU

UPPER RAW  
MATERIAL

**BLACK FULL  
GRAIN LEATHER**  
(PT) Pele de Flor Integral Preta  
(ES) Cuero Full Grain Negro  
(FR) Cuir Pleine Fleur Grainé Noir  
(DE) Schwarz Glattleder  
(NL) Zwart Volnerfleer

LINING  
MATERIAL

**GREY AERPLUS  
TEXTILE**  
(PT) Têxtil Aerplus Cinza  
(ES) Textil Aerplus Gris  
(FR) Textile Aerplus Gris  
(DE) Grau Aerplus Textil  
(NL) Textiel Aerplus Grijs

**XXL**  
49 - 53

[KENOBI XXL]

EN ISO 20345:2022 CE S3 SRA  
EU 48-53\_UK 14-17\_MP 322 - 352



METAL FREE

1004.30



PROTECTIVE  
MIDSOLE

**KEVLAR**  
(PT) Kevlar  
(ES) Kevlar  
(FR) Kevlar  
(DE) Kevlar  
(NL) Kevlar

PROTECTIVE  
TOE CAP

**COMPOSITE**  
(PT) Composite  
(ES) Composite  
(FR) Composite  
(DE) Kunststoffkappe  
(NL) Composiet

SOLE

**DOUBLE DENSITY  
PU**  
(PT) Dupla Densidade PU  
(ES) Doble Densidade PU  
(FR) Double Densité PU  
(DE) Zweikomponenten PU  
(NL) Tweekomponenten PU

UPPER RAW  
MATERIAL

**BLACK FULL  
GRAIN LEATHER**  
(PT) Pele de Flor Integral Preta  
(ES) Cuero Full Grain Negro  
(FR) Cuir Pleine Fleur Grainé Noir  
(DE) Schwarz Glattleder  
(NL) Zwart Volnerfleer

LINING  
MATERIAL

**GREY AERPLUS  
TEXTILE**  
(PT) Têxtil Aerplus Cinza  
(ES) Textil Aerplus Gris  
(FR) Textile Aerplus Gris  
(DE) Grau Aerplus Textil  
(NL) Textiel Aerplus Grijs





LIKE CAR TIRES, THE SOLE IS YOUR VITAL AND CONSTANT CONTACT WITH THE GROUND.

FOR THIS REASON, THIS RANGE IS MADE WITH PU/RUBBER



1084.30

[ E10 BLACK ]

EN ISO 20345:2011 CE S3 HRO SRC  
EU 35-48\_UK 2 1/2 - 13\_MP 217 - 315



PROTECTIVE MIDSOLE

**KEVLAR**  
(PT) Kevlar  
(ES) Kevlar  
(FR) Kevlar  
(DE) Kevlar  
(NL) Kevlar

PROTECTIVE TOE CAP

**STEEL**  
(PT) Aço  
(ES) Acero  
(FR) Acier  
(DE) Stahlkappe  
(NL) Staal

SOLE

**DIRECT INJECTED PU + RUBBER**  
(PT) PU Diretamente Injetado + Borracha  
(ES) PU inyectado directo + Caucho  
(FR) PU Injecté Directement + Nitril  
(DE) Direkt Eingespritztes PU + Gummi  
(NL) Direct geïnjecteerd PU + Rubber

UPPER RAW MATERIAL

**BLACK NUBUCK LEATHER**  
(PT) Pele Nubuck Preto  
(ES) Cuero Nubuck Negro  
(FR) Cuir Nubuck Noir  
(DE) Schwarz Nubuck Leder  
(NL) Zwart Nubuckleer

LINNING MATERIAL

**BLACK PACIFIC TEXTILE**  
(PT) Têxtil Pacific preto  
(ES) Textil Pacific negro  
(FR) Textile Pacific noir  
(DE) Schwarz Pacific textil  
(NL) Textiel Pacific zwart

[E02]

EN ISO 20345:2011 CE S3 HRO SRC  
EU 35-48\_UK 2 1/2-13\_MP 217 - 315



1256.00



PROTECTIVE MIDSOLE

**KEVLAR**  
(PT) Kevlar  
(ES) Kevlar  
(FR) Kevlar  
(DE) Kevlar  
(NL) Kevlar

PROTECTIVE TOE CAP

**STEEL**  
(PT) Aço  
(ES) Acero  
(FR) Acier  
(DE) Stahlkappe  
(NL) Staal

SOLE

**DIRECT INJECTED PU + RUBBER**  
(PT) PU Diretamente Injetado + Borracha  
(ES) PU inyectado directo + Caucho  
(FR) PU Injecté Directement + Nitril  
(DE) Direkt Eingespritztes PU + Gummi  
(NL) Direct geïnjecteerd PU + Rubber

UPPER RAW MATERIAL

**BLACK NUBUCK LEATHER**  
(PT) Pele Nubuck Preto  
(ES) Cuero Nobuck Negro  
(FR) Cuir Nubuck Noir  
(DE) Schwarz Nubuck Leder  
(NL) Zwart Nubuckleer

LINING MATERIAL

**BLACK PACIFIC TEXTILE**  
(PT) Têxtil Pacific preto  
(ES) Textil Pacific negro  
(FR) Textile Pacific noir  
(DE) Schwarz Pacific textil  
(NL) Textiel Pacific zwart

1084.22

[E17 BROWN]

EN ISO 20345:2011 CE S3 HRO SRC  
EU 35-48\_UK 2 1/2-13\_MP 217 - 315



PROTECTIVE MIDSOLE

**KEVLAR**  
(PT) Kevlar  
(ES) Kevlar  
(FR) Kevlar  
(DE) Kevlar  
(NL) Kevlar

PROTECTIVE TOE CAP

**STEEL**  
(PT) Aço  
(ES) Acero  
(FR) Acier  
(DE) Stahlkappe  
(NL) Staal

SOLE

**DIRECT INJECTED PU + RUBBER**  
(PT) PU Diretamente Injetado + Borracha  
(ES) PU inyectado directo + Caucho  
(FR) PU Injecté Directement + Nitril  
(DE) Direkt Eingespritztes PU + Gummi  
(NL) Direct geïnjecteerd PU + Rubber

UPPER RAW MATERIAL

**BROWN NUBUCK LEATHER**  
(PT) Pele Nubuck Castanho  
(ES) Cuero Nobuck Marrón  
(FR) Cuir Nubuck Marron  
(DE) Braun Nubuck Leder  
(NL) Bruin Nubuckleer

LINING MATERIAL

**BLACK PACIFIC TEXTILE**  
(PT) Têxtil Pacific preto  
(ES) Textil Pacific negro  
(FR) Textile Pacific noir  
(DE) Schwarz Pacific textil  
(NL) Textiel Pacific zwart

1084.36

[E16 HONEY]

EN ISO 20345:2011 CE S3 HRO SRC  
EU 35-48\_UK 2 1/2-13\_MP 217 - 315



PROTECTIVE MIDSOLE

**KEVLAR**  
(PT) Kevlar  
(ES) Kevlar  
(FR) Kevlar  
(DE) Kevlar  
(NL) Kevlar

PROTECTIVE TOE CAP

**STEEL**  
(PT) Aço  
(ES) Acero  
(FR) Acier  
(DE) Stahlkappe  
(NL) Staal

SOLE

**DIRECT INJECTED PU + RUBBER**  
(PT) PU Diretamente Injetado + Borracha  
(ES) PU inyectado directo + Caucho  
(FR) PU Injecté Directement + Nitril  
(DE) Direkt Eingespritztes PU + Gummi  
(NL) Direct geïnjecteerd PU + Rubber

UPPER RAW MATERIAL

**BEIGE NUBUCK LEATHER**  
(PT) Pele Nubuck Bege  
(ES) Cuero Nobuck Beige  
(FR) Cuir Nubuck Beige  
(DE) Beige Nubuck Leder  
(NL) Beige Nubuckleer

LINING MATERIAL

**BLACK PACIFIC TEXTILE**  
(PT) Têxtil Pacific preto  
(ES) Textil Pacific negro  
(FR) Textile Pacific noir  
(DE) Schwarz Pacific textil  
(NL) Textiel Pacific zwart

1084.21

[E18 BLUE]

EN ISO 20345:2011 CE S3 HRO SRC  
EU 35-48\_UK 2 1/2-13\_MP 217 - 315



PROTECTIVE MIDSOLE

**KEVLAR**  
(PT) Kevlar  
(ES) Kevlar  
(FR) Kevlar  
(DE) Kevlar  
(NL) Kevlar

PROTECTIVE TOE CAP

**STEEL**  
(PT) Aço  
(ES) Acero  
(FR) Acier  
(DE) Stahlkappe  
(NL) Staal

SOLE

**DIRECT INJECTED PU + RUBBER**  
(PT) PU Diretamente Injetado + Borracha  
(ES) PU inyectado directo + Caucho  
(FR) PU Injecté Directement + Nitril  
(DE) Direkt Eingespritztes PU + Gummi  
(NL) Direct geïnjecteerd PU + Rubber

UPPER RAW MATERIAL

**BLUE NUBUCK LEATHER**  
(PT) Pele Nubuck Azul  
(ES) Cuero Nobuck Azul  
(FR) Cuir Nubuck Bleu  
(DE) Blau Nubuck Leder  
(NL) Blauw Nubuckleer

LINING MATERIAL

**BLACK PACIFIC TEXTILE**  
(PT) Têxtil Pacific preto  
(ES) Textil Pacific negro  
(FR) Textile Pacific noir  
(DE) Schwarz Pacific textil  
(NL) Textiel Pacific zwart

[E22]

EN ISO 20345:2011 CE S3 HRO SRC  
EU 35-48\_UK 2 1/2-13\_MP 217 - 315



1058.00



[E802]

EN ISO 20345:2011 CE S3 HRO SRC WR  
EU 35-48\_UK 2 1/2-13\_MP 217 - 315



1684.42



PROTECTIVE MIDSOLE

**KEVLAR**  
(PT) Kevlar  
(ES) Kevlar  
(FR) Kevlar  
(DE) Kevlar  
(NL) Kevlar

PROTECTIVE TOE CAP

**STEEL**  
(PT) Aço  
(ES) Acero  
(FR) Acier  
(DE) Stahlkappe  
(NL) Staal

SOLE

**DIRECT INJECTED PU + RUBBER**  
(PT) PU Diretamente Injetado + Borracha  
(ES) PU inyectado directo + Caucho  
(FR) PU Injecté Directement + Nitril  
(DE) Direkt Eingespritztes PU + Gummi  
(NL) Direct geïnjecteerd PU + Rubber

UPPER RAW MATERIAL

**BLACK FULL GRAIN LEATHER**  
(PT) Pele de Flor Integral Preta  
(ES) Cuero Full Grain Negro  
(FR) Cuir Pleine Fleur Grainé Noir  
(DE) Schwarz Glattleder  
(NL) Zwart Volnerfleer

LINING MATERIAL

**BLACK PACIFIC TEXTILE**  
(PT) Têxtil Pacific preto  
(ES) Textil Pacific negro  
(FR) Textile Pacific noir  
(DE) Schwarz Pacific textil  
(NL) Textiel Pacific zwart

PROTECTIVE MIDSOLE

**KEVLAR**  
(PT) Kevlar  
(ES) Kevlar  
(FR) Kevlar  
(DE) Kevlar  
(NL) Kevlar

PROTECTIVE TOE CAP

**STEEL**  
(PT) Aço  
(ES) Acero  
(FR) Acier  
(DE) Stahlkappe  
(NL) Staal

SOLE

**DIRECT INJECTED PU + RUBBER**  
(PT) PU Diretamente Injetado + Borracha  
(ES) PU inyectado directo + Caucho  
(FR) PU Injecté Directement + Nitril  
(DE) Direkt Eingespritztes PU + Gummi  
(NL) Direct geïnjecteerd PU + Rubber

UPPER RAW MATERIAL

**WR FLOATER COGNAC**  
(PT) WR Floater Cognac  
(ES) Coñac Floater WR  
(FR) Cuir Pleine Fleur WR Cognac  
(DE) WR Floater Cognac  
(NL) WR Floater Cognac

LINING MATERIAL

**FUR + AQUATEX MEMBRANE**  
(PT) Forro de Pêlo + Membrana Aquatex  
(ES) Forro de Piel+ Membrana Aquatex  
(FR) Doublure En Fourrure + Membrane Aquatex  
(DE) Pelzfutter + Aquatex Membrane  
(NL) Bontvoering + Aquatex Membraan

[E82]

EN ISO 20345:2011 CE S3 HRO SRC  
EU 35-48\_UK 2 1/2-13\_MP 217 - 315



1084.42



PROTECTIVE MIDSOLE

**KEVLAR**  
(PT) Kevlar  
(ES) Kevlar  
(FR) Kevlar  
(DE) Kevlar  
(NL) Kevlar

PROTECTIVE TOE CAP

**STEEL**  
(PT) Aço  
(ES) Acero  
(FR) Acier  
(DE) Stahlkappe  
(NL) Staal

SOLE

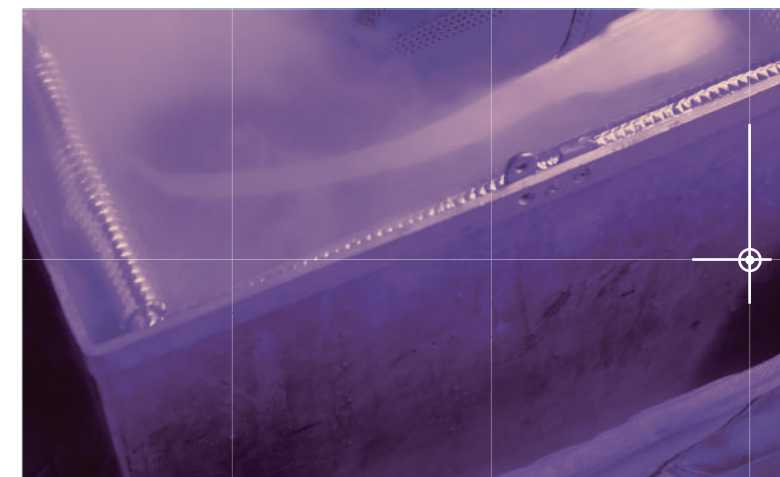
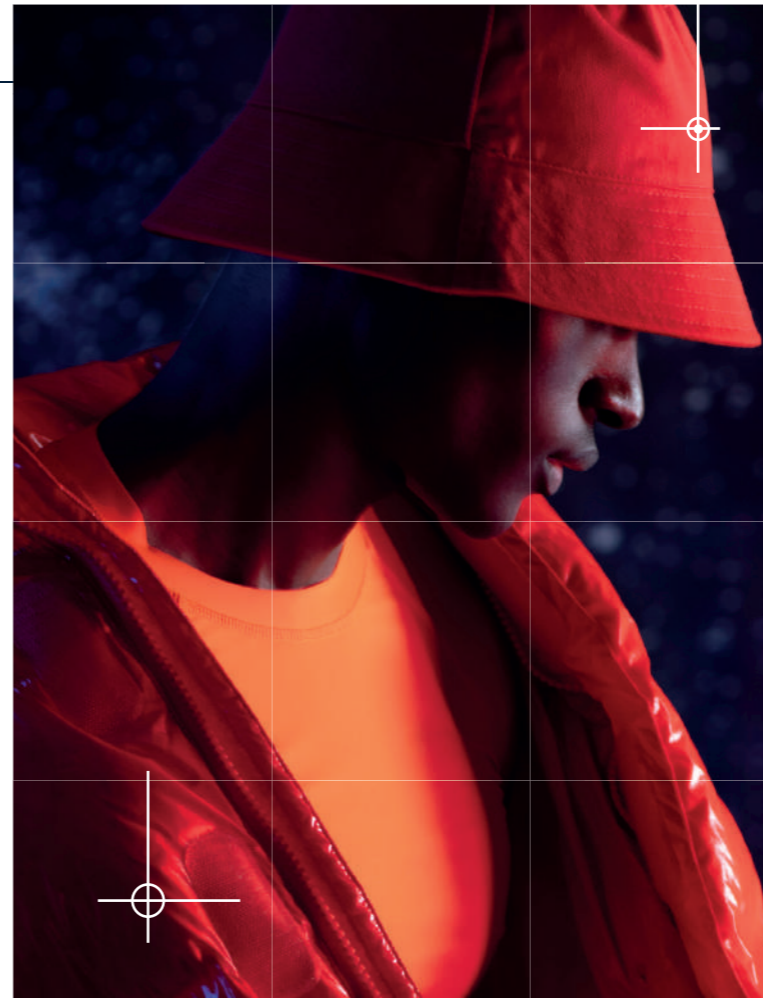
**DIRECT INJECTED PU + RUBBER**  
(PT) PU Diretamente Injetado + Borracha  
(ES) PU inyectado directo + Caucho  
(FR) PU Injecté Directement + Nitril  
(DE) Direkt Eingespritztes PU + Gummi  
(NL) Direct geïnjecteerd PU + Rubber

UPPER RAW MATERIAL

**WR FLOATER COGNAC**  
(PT) WR Floater Cognac  
(ES) Coñac Floater WR  
(FR) Cuir Pleine Fleur WR Cognac  
(DE) WR Floater Cognac  
(NL) WR Floater Cognac

LINING MATERIAL

**BLACK PACIFIC TEXTILE**  
(PT) Têxtil Pacific preto  
(ES) Textil Pacific negro  
(FR) Textile Pacific noir  
(DE) Schwarz Pacific textil  
(NL) Textiel Pacific zwart







IMPROVES CUSHIONING,  
PROTECTING THE FOOT  
AGAINST SHOCKS AND  
ENHANCING COMFORT

DIRECTLY INJECTED PU SOLE  
PROVIDES SHOCK ABSORPTION  
ACROSS THE WHOLE FOOT,  
HIGH FLEXIBILITY AND  
MAKES IT LIGHTWEIGHT

THE TPU OUTSOLE  
PROVIDES EXCELLENT  
ABRASION AND SLIP  
RESISTANCE ENSURING  
A SECURE CONTACT TO  
THE GROUND

**CLIMA CORK SYSTEM**  
THE NATURAL ENVIRONMENT OF YOUR FEET

[HYBRID BLUE]

EN ISO 20345:2011 CE S3 SRC  
EU 35-48\_UK 2 1/2-13\_MP 217 - 315

1263.11



**PROTECTIVE MIDSOLE**

**KEVLAR**  
(PT) Kevlar  
(ES) Kevlar  
(FR) Kevlar  
(DE) Kevlar  
(NL) Kevlar

**PROTECTIVE TOE CAP**

**COMPOSITE**  
(PT) Composite  
(ES) Composite  
(FR) Composite  
(DE) Kunststoffkappe  
(NL) Composiet

**SOLE**

**DIRECT INJECTED PU + TPU**  
(PT) PU Diretamente Injetado + TPU  
(ES) PU inyectado directo + TPU  
(FR) PU Injecté Directement + TPU  
(DE) Direkt Eingespritztes PU + TPU  
(NL) Direct geïnjecteerd PU + TPU

**UPPER RAW MATERIAL**

**BLACK LASER HD WR TEXTILE**  
(PT) Têxtil Laser HD WR  
(ES) Textil Negro Laser HD WR  
(FR) Textile Laser Noir HD WR  
(DE) Schwarz Laser HD WR Textil  
(NL) Zwart Laser HD WR Textiel

**LINNING MATERIAL**

**BLACK CAMBRELE TEXTILE**  
(PT) Têxtil Cambrelle preto  
(ES) Textil Cambrelle negro  
(FR) Textile Cambrelle noir  
(DE) Schwarz Cambrelle Textil  
(NL) Textiel Cambrelle zwart

[HYBRID RED]

EN ISO 20345:2011 CE S3 SRC  
EU 35-48\_UK 2 1/2-13\_MP 217 - 315



1263.14

PROTECTIVE MIDSOLE

**KEVLAR**  
(PT) Kevlar  
(ES) Kevlar  
(FR) Kevlar  
(DE) Kevlar  
(NL) Kevlar

PROTECTIVE TOE CAP

**COMPOSITE**  
(PT) Composite  
(ES) Composite  
(FR) Composite  
(DE) Kunststoffkappe  
(NL) Composiet

SOLE

**DIRECT INJECTED PU + TPU**  
(PT) PU Diretamente Injetado + TPU  
(ES) PU inyectado directo + TPU  
(FR) PU Injecté Directement + TPU  
(DE) Direkt Eingespritztes PU + TPU  
(NL) Direct geïnjecteerd PU + TPU

UPPER RAW MATERIAL

**BLACK LASER HD WR TEXTILE**  
(PT) Têxtil Laser HD WR  
(ES) Textil Negro Laser HD WR  
(FR) Textile Laser Noir HD WR  
(DE) Schwarz Laser HD WR Textil  
(NL) Zwart Laser HD WR Textiel

LINING MATERIAL

**BLACK CAMBRELLE TEXTILE**  
(PT) Têxtil Cambrelle preto  
(ES) Textil Cambrelle negro  
(FR) Textile Cambrelle noir  
(DE) Schwarz Cambrelle Textil  
(NL) Textiel Cambrelle zwart

1250.00

[TIDAL]

EN ISO 20345:2011 CE S3 SRC  
EU 36-48\_UK 3-13\_MP 225 - 315



PROTECTIVE MIDSOLE

**KEVLAR**  
(PT) Kevlar  
(ES) Kevlar  
(FR) Kevlar  
(DE) Kevlar  
(NL) Kevlar

PROTECTIVE TOE CAP

**COMPOSITE**  
(PT) Composite  
(ES) Composite  
(FR) Composite  
(DE) Kunststoffkappe  
(NL) Composiet

SOLE

**DIRECT INJECTED PU + TPU**  
(PT) PU Diretamente Injetado + TPU  
(ES) PU inyectado directo + TPU  
(FR) PU Injecté Directement + TPU  
(DE) Direkt Eingespritztes PU + TPU  
(NL) Direct geïnjecteerd PU + TPU

UPPER RAW MATERIAL

**BLACK LEATHER + GREY TEXTILE**  
(PT) Pele Preta + Têxtil Cinza  
(ES) Piel Negra + Textil Gris  
(FR) Cuir Noir + Textile Gris  
(DE) Schwarz Leder + Grau Textil  
(NL) Zwart Leer + Grijs Textiel

LINING MATERIAL

**BLACK CAMBRELLE TEXTILE**  
(PT) Têxtil Cambrelle preto  
(ES) Textil Cambrelle negro  
(FR) Textile Cambrelle noir  
(DE) Schwarz Cambrelle Textil  
(NL) Textiel Cambrelle zwart

[SOLAR]

EN ISO 20345:2011 CE S1P SRC  
EU 36-48\_UK 3-13\_MP 225 - 315



1250.01

PROTECTIVE MIDSOLE

**KEVLAR**  
(PT) Kevlar  
(ES) Kevlar  
(FR) Kevlar  
(DE) Kevlar  
(NL) Kevlar

PROTECTIVE TOE CAP

**COMPOSITE**  
(PT) Composite  
(ES) Composite  
(FR) Composite  
(DE) Kunststoffkappe  
(NL) Composiet

SOLE

**DIRECT INJECTED PU + TPU**  
(PT) PU Diretamente Injetado + TPU  
(ES) PU inyectado directo + TPU  
(FR) PU Injecté Directement + TPU  
(DE) Direkt Eingespritztes PU + TPU  
(NL) Direct geïnjecteerd PU + TPU

UPPER RAW MATERIAL

**BLUE SUEDE LEATHER**  
(PT) Couro Acamuçado Azul  
(ES) Cuero de Gamuza Azul  
(FR) Croute Velours Bleu  
(DE) Blau Suede Leder  
(NL) Suede Leer Blauw

LINING MATERIAL

**BLACK CAMBRELLE TEXTILE**  
(PT) Têxtil Cambrelle preto  
(ES) Textil Cambrelle negro  
(FR) Textile Cambrelle noir  
(DE) Schwarz Cambrelle Textil  
(NL) Textiel Cambrelle zwart

1050.00

[BIOMASS]

EN ISO 20345:2011 CE S3 SRC  
EU 36-48\_UK 3-13\_MP 225 - 315



PROTECTIVE MIDSOLE

**KEVLAR**  
(PT) Kevlar  
(ES) Kevlar  
(FR) Kevlar  
(DE) Kevlar  
(NL) Kevlar

PROTECTIVE TOE CAP

**COMPOSITE**  
(PT) Composite  
(ES) Composite  
(FR) Composite  
(DE) Kunststoffkappe  
(NL) Composiet

SOLE

**DIRECT INJECTED PU + TPU**  
(PT) PU Diretamente Injetado + TPU  
(ES) PU inyectado directo + TPU  
(FR) PU Injecté Directement + TPU  
(DE) Direkt Eingespritztes PU + TPU  
(NL) Direct geïnjecteerd PU + TPU

UPPER RAW MATERIAL

**BLACK LEATHER + GREY TEXTILE**  
(PT) Pele Preta + Têxtil Cinza  
(ES) Piel Negra + Textil Gris  
(FR) Cuir Noir + Textile Gris  
(DE) Schwarz Leder + Grau Textil  
(NL) Zwart Leer + Grijs Textiel

LINING MATERIAL

**BLACK CAMBRELLE TEXTILE**  
(PT) Têxtil Cambrelle preto  
(ES) Textil Cambrelle negro  
(FR) Textile Cambrelle noir  
(DE) Schwarz Cambrelle Textil  
(NL) Textiel Cambrelle zwart

DESIGNED FOR MULTIDIRECTIONAL FLOORS, GIVING A PERFECT TRACTION WITH COMFORT TO YOUR FEET

TECHNICAL CONTRIBUTION OF  
**SPODOS**  
FOOT SCIENCE CENTER



1237.00



**PROTECTIVE MIDSOLE**

**KEVLAR**  
(PT) Kevlar  
(ES) Kevlar  
(FR) Kevlar  
(DE) Kevlar  
(NL) Kevlar

**PROTECTIVE TOE CAP**

**STEEL**  
(PT) Aço  
(ES) Acero  
(FR) Acier  
(DE) Stahlkappe  
(NL) Staal

**SOLE**

**DOUBLE DENSITY PU**  
(PT) Dupla Densidade PU  
(ES) Doble Densidade PU  
(FR) Double Densité PU  
(DE) Zweikomponenten PU  
(NL) Tweekomponenten PU

**UPPER RAW MATERIAL**

**MATRIX KEVLAR + ANILINE LEATHER**  
(PT) Matrix Kevlar + Pele Anilina Preta  
(ES) Matrix Kevlar + Cuero Anilina Negro  
(FR) Matrix Kevlar + Cuir Aniline Noir  
(DE) Schwarz Matrix Kevlar + Aniline Leder  
(NL) Matrix Kevlar + Glad Leer Anilina Zwart

**LINING MATERIAL**

**BLACK PACIFIC TEXTILE**  
(PT) Têxtil Pacifico Preto  
(ES) Textil Pacific Negro  
(FR) Textile Pacific Noir  
(DE) Schwarz Pacific Textile  
(NL) Zwart Pacific Textiel

EN ISO 20345:2011 CE S3 SRA  
EU 36-47\_UK 3-12\_MP 225 - 307



1238.02

[TEAM BROWN]

EN ISO 20345:2011 CE S3 SRA  
EU 36-47\_UK 3-12\_MP 225 - 307



**PROTECTIVE MIDSOLE**

**KEVLAR**  
(PT) Kevlar  
(ES) Kevlar  
(FR) Kevlar  
(DE) Kevlar  
(NL) Kevlar

**PROTECTIVE TOE CAP**

**STEEL**  
(PT) Aço  
(ES) Acero  
(FR) Acier  
(DE) Stahlkappe  
(NL) Staal

**SOLE**

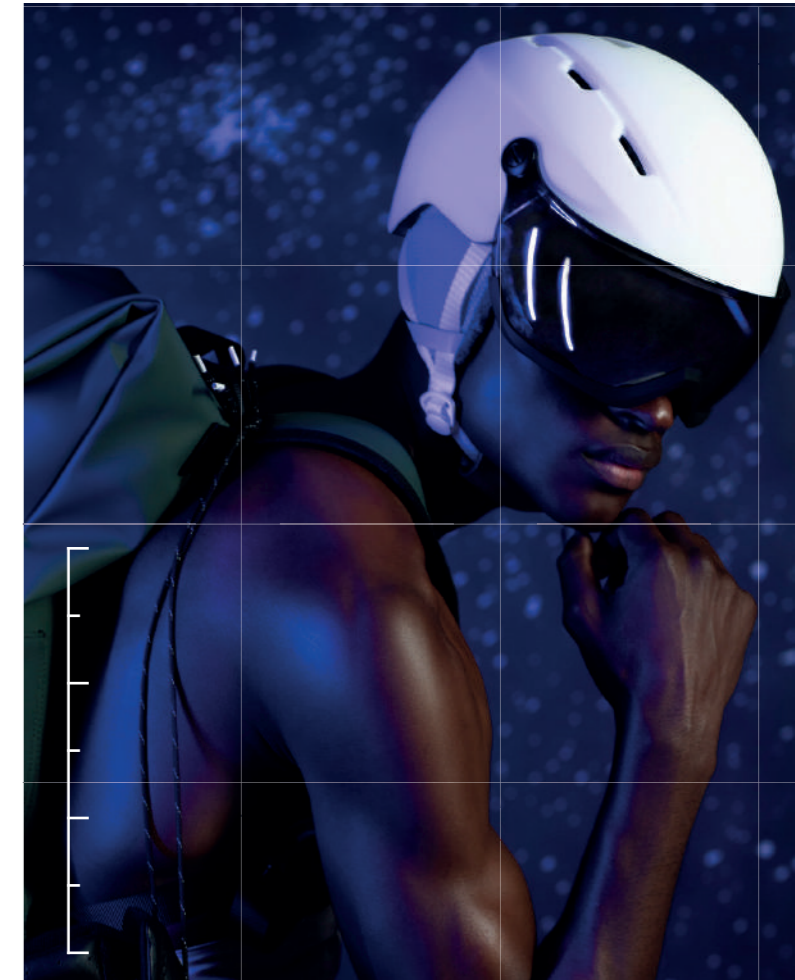
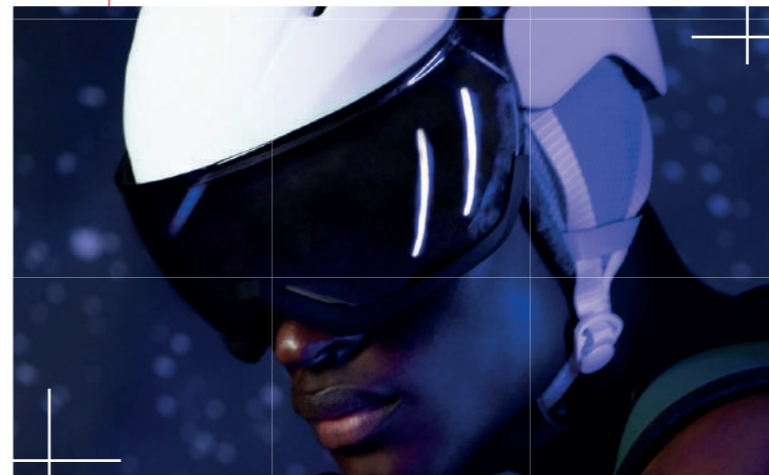
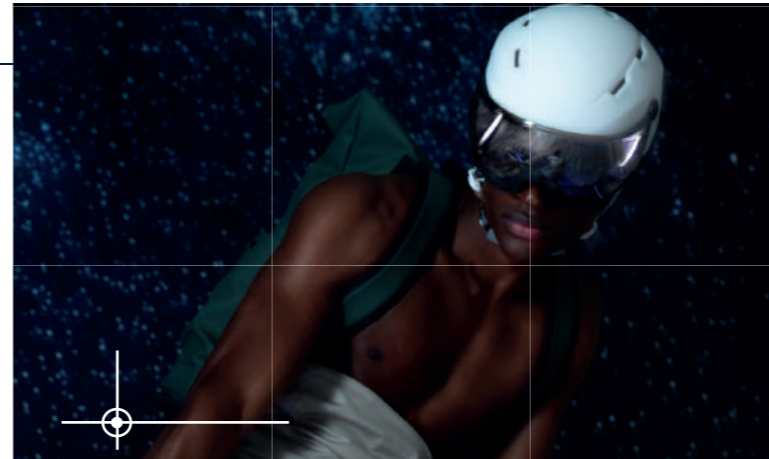
**DOUBLE DENSITY PU**  
(PT) Dupla Densidade PU  
(ES) Doble Densidade PU  
(FR) Double Densité PU  
(DE) Zweikomponenten PU  
(NL) Tweekomponenten PU

**UPPER RAW MATERIAL**

**BROWN NUBUCK LEATHER**  
(PT) Pele Nubuck Castanho  
(ES) Cuero Nubuck Marrón  
(FR) Cuir Nubuck Marron  
(DE) Braun Nubuck Leder  
(NL) Bruin Nubuckleer

**LINING MATERIAL**

**ANILINE LEATHER**  
(PT) Pele Anilina  
(ES) Cuero Anilina  
(FR) Cuir Aniline  
(DE) Aniline Leder  
(NL) Aniline Leer





EASY CLEANING DEEP  
PROFILED SOLE

EXTRA PU PROTECTION  
ALL AROUND THE BOOT

1611.00



PROTECTIVE  
MIDSOLE

**STEEL**  
(PT) Aço  
(ES) Acero  
(FR) Acier  
(DE) Stahlkappe  
(NL) Staal

PROTECTIVE  
TOE CAP

**STEEL**  
(PT) Aço  
(ES) Acero  
(FR) Acier  
(DE) Stahlkappe  
(NL) Staal

SOLE

**DOUBLE DENSITY  
PU**  
(PT) Dupla Densidade PU  
(ES) Doble Densidade PU  
(FR) Double Densité PU  
(DE) Zweikomponenten PU  
(NL) Tweekomponenten PU

UPPER RAW  
MATERIAL

**BLACK FULL  
GRAIN LEATHER**  
(PT) Pele de Flor Integral Preta  
(ES) Cuero Full Grain Negro  
(FR) Cuir Pleine Fleur Grainé Noir  
(DE) Schwarz Glattleder  
(NL) Zwart Volnerleer

LINNING  
MATERIAL

**AQUATEX WATER-  
PROOF MEMBRANE**  
(PT) Membrana Impermeável Aquatex  
(ES) Membrana Impermeable Aquatex  
(FR) Membrane Impermeable Aquatex  
(DE) Aquatex Wasserdichte Membrane  
(NL) Aquatex Waterdicht Membran

[EXPLORATION HIGH]

EN ISO 20345:2022 CE S3 SRC WR  
EU 39-48\_UK 6-13\_MP 247 - 315



1611.00



PROTECTIVE  
MIDSOLE

**STEEL**  
(PT) Aço  
(ES) Acero  
(FR) Acier  
(DE) Stahlkappe  
(NL) Staal

PROTECTIVE  
TOE CAP

**STEEL**  
(PT) Aço  
(ES) Acero  
(FR) Acier  
(DE) Stahlkappe  
(NL) Staal

SOLE

**DOUBLE DENSITY  
PU**  
(PT) Dupla Densidade PU  
(ES) Doble Densidade PU  
(FR) Double Densité PU  
(DE) Zweikomponenten PU  
(NL) Tweekomponenten PU

UPPER RAW  
MATERIAL

**BLACK FULL  
GRAIN LEATHER**  
(PT) Pele de Flor Integral Preta  
(ES) Cuero Full Grain Negro  
(FR) Cuir Pleine Fleur Grainé Noir  
(DE) Schwarz Glattleder  
(NL) Zwart Volnerleer

LINNING  
MATERIAL

**AQUATEX WATER-  
PROOF MEMBRANE**  
(PT) Membrana Impermeável Aquatex  
(ES) Membrana Impermeable Aquatex  
(FR) Membrane Impermeable Aquatex  
(DE) Aquatex Wasserdichte Membrane  
(NL) Aquatex Waterdicht Membran



07

[LAVORO TECH]



LAVORO  
ENGINEERING LIFE

[DAINTREE 2.1]

EN ISO 17249:2013 / AC:2014 CLASS 1  
EN ISO 20345:2022 CE S3 HRO SRC  
EU 39-48\_UK 6-13\_MP 247-315



1053.90



PROTECTIVE MIDSOLE

STEEL  
(PT) Aço  
(ES) Acero  
(FR) Acier  
(DE) Stahlkappe  
(NL) Staal

PROTECTIVE TOE CAP

STEEL  
(PT) Aço  
(ES) Acero  
(FR) Acier  
(DE) Stahlkappe  
(NL) Staal

SOLE

DOUBLE DENSITY PU + RUBBER  
(PT) Dupla Densidade PU  
(ES) Doble Densidade PU  
(FR) Double Densité PU  
(DE) Zweikomponenten PU  
(NL) Tweekomponenten PU

UPPER RAW MATERIAL

BLACK FULL GRAIN LEATHER  
(PT) Pele de Flor Integral Preta  
(ES) Cuero Full Grain Negro  
(FR) Cuir Pleine Fleur Grainé Noir  
(DE) Schwarz Glattleder  
(NL) Zwart Volnerfleer

LINNING MATERIAL

BLACK CAMBRELLE TEXTILE  
(PT) Têxtil Cambrelle preto  
(ES) Textil Cambrelle negro  
(FR) Textile Cambrelle noir  
(DE) Schwarz Cambrelle Textil  
(NL) Textiel Cambrelle zwart



1671.02

[ELITE]

EN ISO 17249:2013 / AC:2014 CLASS 2  
EN ISO 20345:2022 CE S3 HRO SRC WR  
EU 39-48\_UK 6-13\_MP 247-315



PROTECTIVE MIDSOLE

STEEL  
(PT) Aço  
(ES) Acero  
(FR) Acier  
(DE) Stahlkappe  
(NL) Staal

PROTECTIVE TOE CAP

STEEL  
(PT) Aço  
(ES) Acero  
(FR) Acier  
(DE) Stahlkappe  
(NL) Staal

SOLE

DOUBLE DENSITY PU  
(PT) Dupla Densidade PU  
(ES) Doble Densidade PU  
(FR) Double Densité PU  
(DE) Zweikomponenten PU  
(NL) Tweekomponenten PU

UPPER RAW MATERIAL

BROWN CRAZY HORSE LEATHER  
(PT) Pele Crazy Horse Castanha  
(ES) Cuero Crazy Horse Marrón  
(FR) Cuir Crazy Horse Marron  
(DE) Braun Crazy Horse Leder  
(NL) Bruin Crazy Horse Leer

LINNING MATERIAL

SYMPATEX WATER-PROOF MEMBRANE  
(PT) Membrana Impermeável Sympatex  
(ES) Membrana Impermeable Sympatex  
(FR) Membrane Impermeable Sympatex  
(DE) Membrane Wasserdichte Membrane  
(NL) Sympatex Waterdicht Membraan

[SHERWOOD]

EN ISO 17249:2013 / AC:2014 CLASS 3  
EN ISO 20345:2022 CE S3 HRO SRA WR  
EU 39-47\_UK 6-12\_MP 247-307



1053.60

PROTECTIVE MIDSOLE

**STEEL**  
(PT) Aço  
(ES) Acero  
(FR) Acier  
(DE) Stahlkappe  
(NL) Staal

PROTECTIVE TOE CAP

**STEEL**  
(PT) Aço  
(ES) Acero  
(FR) Acier  
(DE) Stahlkappe  
(NL) Staal

SOLE

**DIRECT INJECTED PU + RUBBER**  
(PT) PU Diretamente Injetado + Borracha  
(ES) PU inyectado directo + Caucho  
(FR) PU Injecté Directement + Nitril  
(DE) Direkt Eingespritztes PU + Gummi  
(NL) Direct geïnjecteerd PU + Rubber

UPPER RAW MATERIAL

**BLACK FULL GRAIN LEATHER**  
(PT) Pele de Flor Integral Preta  
(ES) Cuero Full Grain Negro  
(FR) Cuir Pleine Fleur Grainé Noir  
(DE) Schwarz Glattleder  
(NL) Zwart Volnerfleer

LINNING MATERIAL

**SYMPATEX WATER-PROOF MEMBRANE**  
(PT) Membrana Impermeável Sympatex  
(ES) Membrana Impermeable Sympatex  
(FR) Membrane Impermeable Sympatex  
(DE) Sympatex Wasserdichte Membrane  
(NL) Sympatex Waterdicht Membran

[THOR]

EN ISO 20345:2011 CE S3 CI HI WR HRO SRC WR  
EU 39-47\_UK 6-12\_MP 247-307



1632.02

320 mm

REAR ZIP

PROTECTIVE MIDSOLE

**STEEL**  
(PT) Aço  
(ES) Acero  
(FR) Acier  
(DE) Stahlkappe  
(NL) Staal

PROTECTIVE TOE CAP

**STEEL**  
(PT) Aço  
(ES) Acero  
(FR) Acier  
(DE) Stahlkappe  
(NL) Staal

SOLE

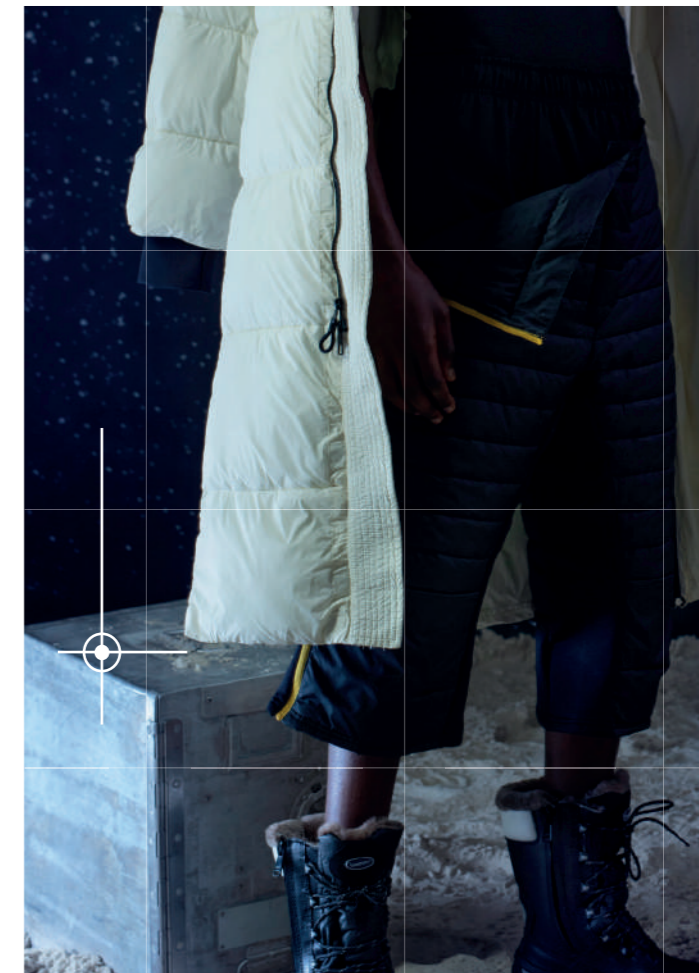
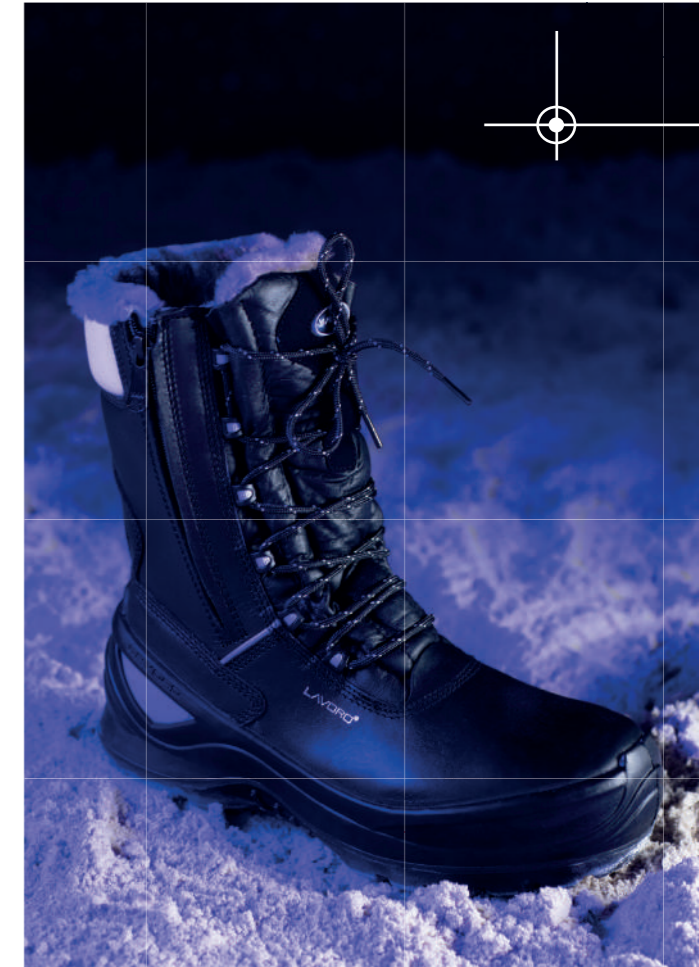
**DIRECT INJECTED PU + VIBRAM**  
(PT) PU Diretamente Injetado + Vibram  
(ES) PU inyectado directo + Vibram  
(FR) PU Injecté Directement + Vibram  
(DE) Direkt Eingespritztes PU + Vibram  
(NL) Direct geïnjecteerd PU + Vibram

UPPER RAW MATERIAL

**BROWN CRAZY HORSE LEATHER**  
(PT) Pele Crazy Horse Castanha  
(ES) Cuero Crazy Horse Marrón  
(FR) Cuir Crazy Horse Marron  
(DE) Braun Crazy Horse Leder  
(NL) Bruin Crazy Horse Leer

LINNING MATERIAL

**SYMPATEX WATER-PROOF MEMBRANE**  
(PT) Membrana Impermeável Sympatex  
(ES) Membrana Impermeable Sympatex  
(FR) Membrane Impermeable Sympatex  
(DE) Sympatex Wasserdichte Membrane  
(NL) Sympatex Waterdicht Membran



1625.00



[ICELANDICC]

EN ISO 20345:2011 CE S3 CI SRC  
EU 36-50\_UK 3-14 1/2\_MP 225-330



2 SIDE ZIPS



PROTECTIVE MIDSOLE

**STEEL**  
[PT] Aço  
[ES] Acero  
[FR] Acier  
[DE] Stahlkappe  
[NL] Staal

PROTECTIVE TOE CAP

**COMPOSITE**  
[PT] Composite  
[ES] Composite  
[FR] Composite  
[DE] Kunststoffkappe  
[NL] Composit

SOLE

**DOUBLE DENSITY PU**  
[PT] Dupla Densidade PU  
[ES] Doble Densidade PU  
[FR] Double Densité PU  
[DE] Zweikomponenten PU  
[NL] Tweekomponenten PU

UPPER RAW MATERIAL

**BLACK FULL GRAIN LEATHER**  
[PT] Pele de Flor Integral Preta  
[ES] Cuero Full Grain Negro  
[FR] Cuir Pleine Fleur Grainé Noir  
[DE] Schwarz Glattleder  
[NL] Zwart Volnerleer

LINNING MATERIAL

**NATURAL LAMBSIN**  
[PT] Pele Natural de Carneiro  
[ES] Piel de Cordero Natural  
[FR] Peau de Mouton Naturelle  
[DE] Natürliches Lamm Futter  
[NL] Natuurlijk Lamsleer



2018.20



[FÉNIX BLACK 2.1]

EN ISO 15090:2012 TIPO 2 H13 F2A  
EN ISO 20345:2011 CE AN CI WR HRO SRA  
EU 35-47\_UK 2 1/2-12\_MP 217 - 307



PROTECTIVE MIDSOLE

**KEVLAR**  
[PT] Kevlar  
[ES] Kevlar  
[FR] Kevlar  
[DE] Kevlar  
[NL] Kevlar

PROTECTIVE TOE CAP

**COMPOSITE**  
[PT] Composite  
[ES] Composite  
[FR] Composite  
[DE] Kunststoffkappe  
[NL] Composit

SOLE

**DIRECT VULCANIZED FIRE-RETARDANT RUBBER**  
[PT] Borracha Ignifuga Diretamente Vulcanizada  
[ES] Caucho ignifugo Vulcanizado Directo  
[FR] Nitril Vulcanisé Directment  
[DE] Vulkanisiertes Feuerhemmender Gummi  
[NL] Direct Gevulkaniseerd Brandvertragend Rubber

UPPER RAW MATERIAL

**BLACK FULL GRAIN LEATHER**  
[PT] Pele de Flor Integral Preta  
[ES] Cuero Full Grain Negro  
[FR] Cuir Pleine Fleur Grainé Noir  
[DE] Schwarz Glattleder  
[NL] Zwart Volnerleer

LINNING MATERIAL

**SYMPATEX WATER-PROOF MEMBRANE**  
[PT] Membrana Impermeável Sympatex  
[ES] Membrana Impermeable Sympatex  
[FR] Membrane Impermeable Sympatex  
[DE] Sympatex Wasserdichte Membrane  
[NL] Sympatex Waterdicht Membran



[PATROL HIGHWAY 22]

EN ISO 20345:2011 CE 03 HRO SRC  
EU 35-48\_UK 2 1/2-13\_MP 217 - 315



1076.65



PROTECTIVE MIDSOLE

**KEVLAR**  
(PT) Kevlar  
(ES) Kevlar  
(FR) Kevlar  
(DE) Kevlar  
(NL) Kevlar

PROTECTIVE TOE CAP

-  
(PT) -  
(ES) -  
(FR) -  
(DE) -  
(NL) -

SOLE

**DIRECT INJECTED PU + RUBBER**  
(PT) PU Diretamente Injetado + Borracha  
(ES) PU inyectado directo + Caucho  
(FR) PU Injecté Directement + Nitril  
(DE) Direkt Eingespritztes PU + Gummi  
(NL) Direct geïnjecteerd PU + Rubber

UPPER RAW MATERIAL

**BLACK FULL GRAIN LEATHER**  
(PT) Pele de Flor Integral Preta  
(ES) Cuero Full Grain Negro  
(FR) Cuir Pleine Fleur Grainé Noir  
(DE) Schwarz Glattleder  
(NL) Zwart Volnerfleer

LINING MATERIAL

**BLACK CAMBRELLE TEXTILE**  
(PT) Têxtil Cambrelle preto  
(ES) Textil Cambrelle negro  
(FR) Textile Cambrelle noir  
(DE) Schwarz Cambrelle Textil  
(NL) Textiel Cambrelle zwart

[NEW PROTECTOR]

EN ISO 20345:2022 CE S3 HRO SRC  
EU 39-47\_UK 6-12\_MP 247-307



1023.50



PROTECTIVE MIDSOLE

**STEEL**  
(PT) Aço  
(ES) Acero  
(FR) Acier  
(DE) Stahlkappe  
(NL) Staal

PROTECTIVE TOE CAP

**STEEL**  
(PT) Aço  
(ES) Acero  
(FR) Acier  
(DE) Stahlkappe  
(NL) Staal

SOLE

**DIRECT INJECTED PU + RUBBER**  
(PT) PU Diretamente Injetado + Borracha  
(ES) PU inyectado directo + Caucho  
(FR) PU Injecté Directement + Nitril  
(DE) Direkt Eingespritztes PU + Gummi  
(NL) Direct geïnjecteerd PU + Rubber

UPPER RAW MATERIAL

**VEGAN MICROFIBER**  
(PT) Microfibra Vegan  
(ES) Microfibra Vegan  
(FR) Microfibre Vegan  
(DE) Mikrofaser Vegan  
(NL) Microvezel Vegan

LINING MATERIAL

**GREY DRYLEX TEXTILE**  
(PT) Têxtil Drylex Cinza  
(ES) Textil Drylex Gris  
(FR) Textile Drylex Gris  
(DE) Grau Drylex textil  
(NL) Textiel Drylex Grijs

[S.A.S. BLACK BOOT]

EN ISO 20345:2011 CE 03 HRO SRC WR  
EU 36-47\_UK 3-12\_MP 225-307



1675.10



PROTECTIVE MIDSOLE

**KEVLAR**  
(PT) Kevlar  
(ES) Kevlar  
(FR) Kevlar  
(DE) Kevlar  
(NL) Kevlar

PROTECTIVE TOE CAP

-  
(PT) -  
(ES) -  
(FR) -  
(DE) -  
(NL) -

SOLE

**DIRECT INJECTED PU + VIBRAM**  
(PT) PU Diretamente Injetado + Vibram  
(ES) PU inyectado directo + Vibram  
(FR) PU Injecté Directement + Vibram  
(DE) Direkt Eingespritztes PU + Vibram  
(NL) Direct geïnjecteerd PU + Vibram

UPPER RAW MATERIAL

**PUTEK VHR TEXTILE**  
(PT) Têxtil Putek VHR  
(ES) Textil Putek VHR  
(FR) Textile Putek VHR  
(DE) Putek VHR Textil  
(NL) Putek VHR Textiel

LINING MATERIAL

**SYMPATEX WATER-PROOF MEMBRANE**  
(PT) Membrana Impermeável Sympatex  
(ES) Membrana Impermeable Sympatex  
(FR) Membrane Impermeable Sympatex  
(DE) Sympatex Wasserdichte Membrane  
(NL) Sympatex Waterdicht Membran

[NEW BARCELONA]

EN ISO 20345:2022 CE S3 HRO SRC  
EU 39-47\_UK 6-12\_MP 247-307



1050.01



PROTECTIVE MIDSOLE

**KEVLAR**  
(PT) Kevlar  
(ES) Kevlar  
(FR) Kevlar  
(DE) Kevlar  
(NL) Kevlar

PROTECTIVE TOE CAP

**STEEL**  
(PT) Aço  
(ES) Acero  
(FR) Acier  
(DE) Stahlkappe  
(NL) Staal

SOLE

**DIRECT INJECTED PU + RUBBER**  
(PT) PU Diretamente Injetado + Borracha  
(ES) PU inyectado directo + Caucho  
(FR) PU Injecté Directement + Nitril  
(DE) Direkt Eingespritztes PU + Gummi  
(NL) Direct geïnjecteerd PU + Rubber

UPPER RAW MATERIAL

**BLACK LEATHER**  
(PT) Pele Preta  
(ES) Cuero Negro  
(FR) Cuir Noir  
(DE) Schwarz Leder  
(NL) Zwart Leer

LINING MATERIAL

**VADICONFORT GREY TEXTILE**  
(PT) Têxtil Cinza Vadiconfort  
(ES) Textil Gris Vadiconfort  
(FR) Textile Vadiconfort Gris  
(DE) Grau Vadiconfort textil  
(NL) Textiel Vadiconfort





[BIANCA]

EN ISO 20345:2011 CE S3 SRC  
EU 36-42\_UK 3-8\_MP 225-270



1118.10



PROTECTIVE MIDSOLE

**KEVLAR**  
(PT) Kevlar  
(ES) Kevlar  
(FR) Kevlar  
(DE) Kevlar  
(NL) Kevlar

PROTECTIVE TOE CAP

**STEEL**  
(PT) Aço  
(ES) Acero  
(FR) Acier  
(DE) Stahlkappe  
(NL) Staal

SOLE

**DIRECT INJECTED PU**  
(PT) PU Diretamente Injetado  
(ES) PU inyectado directo  
(FR) PU Injecté Directement  
(DE) Direkt Eingespritztes PU  
(NL) Direct geïnjecteerd PU

UPPER RAW MATERIAL

**BLACK FULL GRAIN LEATHER**  
(PT) Pele de Flor Integral Preta  
(ES) Cuero Full Grain Negro  
(FR) Cuir Pleine Fleur Grainé Noir  
(DE) Schwarz Glattleder  
(NL) Zwart Volnerfleer

LINNING MATERIAL

**RED ANILINE LEATHER**  
(PT) Pele Anilina Vermetha  
(ES) Cuero Anilina Rojo  
(FR) Cuir Aniline Rouge  
(DE) Rot Aniline Leder  
(NL) Rood Aniline Leer

[CYNDI]

EN ISO 20345:2011 CE S3 SRC  
EU 36-42\_UK 3-8\_MP 225-270



1016.10



PROTECTIVE MIDSOLE

**KEVLAR**  
(PT) Kevlar  
(ES) Kevlar  
(FR) Kevlar  
(DE) Kevlar  
(NL) Kevlar

PROTECTIVE TOE CAP

**STEEL**  
(PT) Aço  
(ES) Acero  
(FR) Acier  
(DE) Stahlkappe  
(NL) Staal

SOLE

**DIRECT INJECTED PU**  
(PT) PU Diretamente Injetado  
(ES) PU inyectado directo  
(FR) PU Injecté Directement  
(DE) Direkt Eingespritztes PU  
(NL) Direct geïnjecteerd PU

UPPER RAW MATERIAL

**BLACK FULL GRAIN LEATHER**  
(PT) Pele de Flor Integral Preta  
(ES) Cuero Full Grain Negro  
(FR) Cuir Pleine Fleur Grainé Noir  
(DE) Schwarz Glattleder  
(NL) Zwart Volnerfleer

LINNING MATERIAL

**RED ANILINE LEATHER**  
(PT) Pele Anilina Vermetha  
(ES) Cuero Anilina Rojo  
(FR) Cuir Aniline Rouge  
(DE) Rot Aniline Leder  
(NL) Rood Aniline Leer

[LUCY]

EN ISO 20345:2011 CE S3 SRC  
EU 36-42\_UK 3-8\_MP 225-270



1021.10

PROTECTIVE MIDSOLE

**KEVLAR**  
(PT) Kevlar  
(ES) Kevlar  
(FR) Kevlar  
(DE) Kevlar  
(NL) Kevlar

PROTECTIVE TOE CAP

**STEEL**  
(PT) Aço  
(ES) Acero  
(FR) Acier  
(DE) Stahlkappe  
(NL) Staal

SOLE

**DIRECT INJECTED PU**  
(PT) PU Diretamente Injetado  
(ES) PU inyectado directo  
(FR) PU Injecté Directement  
(DE) Direkt Eingespritztes PU  
(NL) Direct geïnjecteerd PU

UPPER RAW MATERIAL

**BLACK FULL GRAIN LEATHER**  
(PT) Pele de Flor Integral Preta  
(ES) Cuero Full Grain Negro  
(FR) Cuir Pleine Fleur Grainé Noir  
(DE) Schwarz Glattleder  
(NL) Zwart Volnerfleer

LINING MATERIAL

**RED ANILINE LEATHER**  
(PT) Pele Anilina Vermetha  
(ES) Cuero Anilina Rojo  
(FR) Cuir Aniline Rouge  
(DE) Rot Aniline Leder  
(NL) Rood Aniline Leer

1036.30

[SANDY]

EN ISO 20345:2011 CE S2P SRC  
EU 36-42\_UK 3-8\_MP 225-270



PROTECTIVE MIDSOLE

**KEVLAR**  
(PT) Kevlar  
(ES) Kevlar  
(FR) Kevlar  
(DE) Kevlar  
(NL) Kevlar

PROTECTIVE TOE CAP

**STEEL**  
(PT) Aço  
(ES) Acero  
(FR) Acier  
(DE) Stahlkappe  
(NL) Staal

SOLE

**DIRECT INJECTED PU**  
(PT) PU Diretamente Injetado  
(ES) PU inyectado directo  
(FR) PU Injecté Directement  
(DE) Direkt Eingespritztes PU  
(NL) Direct geïnjecteerd PU

UPPER RAW MATERIAL

**BLACK FULL GRAIN LEATHER**  
(PT) Pele de Flor Integral Preta  
(ES) Cuero Full Grain Negro  
(FR) Cuir Pleine Fleur Grainé Noir  
(DE) Schwarz Glattleder  
(NL) Zwart Volnerfleer

LINING MATERIAL

**BLACK ANILINE LEATHER**  
(PT) Pele Anilina Preta  
(ES) Cuero Anilina Negro  
(FR) Cuir Aniline Noir  
(DE) Schwarz Aniline Leder  
(NL) Zwart Aniline Leer

[EVA]

EN ISO 20345:2011 CE S2P SRC  
EU 36-42\_UK 3-8\_MP 225-270



1153.10

PROTECTIVE MIDSOLE

**KEVLAR**  
(PT) Kevlar  
(ES) Kevlar  
(FR) Kevlar  
(DE) Kevlar  
(NL) Kevlar

PROTECTIVE TOE CAP

**STEEL**  
(PT) Aço  
(ES) Acero  
(FR) Acier  
(DE) Stahlkappe  
(NL) Staal

SOLE

**DIRECT INJECTED PU**  
(PT) PU Diretamente Injetado  
(ES) PU inyectado directo  
(FR) PU Injecté Directement  
(DE) Direkt Eingespritztes PU  
(NL) Direct geïnjecteerd PU

UPPER RAW MATERIAL

**BLACK FULL GRAIN LEATHER**  
(PT) Pele de Flor Integral Preta  
(ES) Cuero Full Grain Negro  
(FR) Cuir Pleine Fleur Grainé Noir  
(DE) Schwarz Glattleder  
(NL) Zwart Volnerfleer

LINING MATERIAL

**BLACK ANILINE LEATHER**  
(PT) Pele Anilina Preta  
(ES) Cuero Anilina Negro  
(FR) Cuir Aniline Noir  
(DE) Schwarz Aniline Leder  
(NL) Zwart Aniline Leer

1087.12

[MELISSA]

EN ISO 20345:2011 CE S2P SRC  
EU 36-42\_UK 3-8\_MP 225-270



PROTECTIVE MIDSOLE

**KEVLAR**  
(PT) Kevlar  
(ES) Kevlar  
(FR) Kevlar  
(DE) Kevlar  
(NL) Kevlar

PROTECTIVE TOE CAP

**COMPOSITE**  
(PT) Composite  
(ES) Composite  
(FR) Composite  
(DE) Kunststoffkappe  
(NL) Composiet

SOLE

**DIRECT INJECTED PU**  
(PT) PU Diretamente Injetado  
(ES) PU inyectado directo  
(FR) PU Injecté Directement  
(DE) Direkt Eingespritztes PU  
(NL) Direct geïnjecteerd PU

UPPER RAW MATERIAL

**BROWN FULL GRAIN LEATHER**  
(PT) Pele de Flor Integral Castanha  
(ES) Cuero Full Grain Marrón  
(FR) Cuir Pleine Fleur Grainé Marron  
(DE) Braun Glattleder  
(NL) Bruin Volnerfleer

LINING MATERIAL

**BROWN PACIFIC TEXTILE**  
(PT) Têxtil Pacific Castanha  
(ES) Textil Pacific Marrón  
(FR) Textile Pacific Marron  
(DE) Braun Pacific textil  
(NL) Textiel Pacific Bruin

**[LEIA 22]**

EN ISO 20345:2011 CE S3 SRC  
EU 35-42\_UK 2 1/2-8\_MP 217-270



1215.18



**PROTECTIVE MIDSOLE**

**KEVLAR**  
(PT) Kevlar  
(ES) Kevlar  
(FR) Kevlar  
(DE) Kevlar  
(NL) Kevlar

**PROTECTIVE TOE CAP**

**COMPOSITE**  
(PT) Composite  
(ES) Composite  
(FR) Composite  
(DE) Kunststoffkappe  
(NL) Composit

**SOLE**

**DOUBLE DENSITY PU**  
(PT) Dupla Densidade PU  
(ES) Doble Densidade PU  
(FR) Double Densité PU  
(DE) Zweikomponenten PU  
(NL) Tweekomponenten PU

**UPPER RAW MATERIAL**

**PINK HIGH-TECH TEXTILE**  
(PT) Têxtil High-Tech Rosa  
(ES) Textil High-Tech Rosa  
(FR) Textile High-Tech Rose  
(DE) Rosa High-Tech Textil  
(NL) Roze High Tech Textiel

**LINING MATERIAL**

**BLACK DRI-LEX TEXTILE**  
(PT) Têxtil Dri-Lex preto  
(ES) Textil Dri-Lex negro  
(FR) Textile Dri-Lex noir  
(DE) Schwarz Dri-Lex textil  
(NL) Textiel Dri-Lex zwart

**[MICHELLE]**

EN ISO 20345:2011 CE S3 HRO SRC  
EU 35-42\_UK 2 1/2-8\_MP 217-270



1084.24



**PROTECTIVE MIDSOLE**

**KEVLAR**  
(PT) Kevlar  
(ES) Kevlar  
(FR) Kevlar  
(DE) Kevlar  
(NL) Kevlar

**PROTECTIVE TOE CAP**

**STEEL**  
(PT) Aço  
(ES) Acero  
(FR) Acier  
(DE) Stahlkappe  
(NL) Staal

**SOLE**

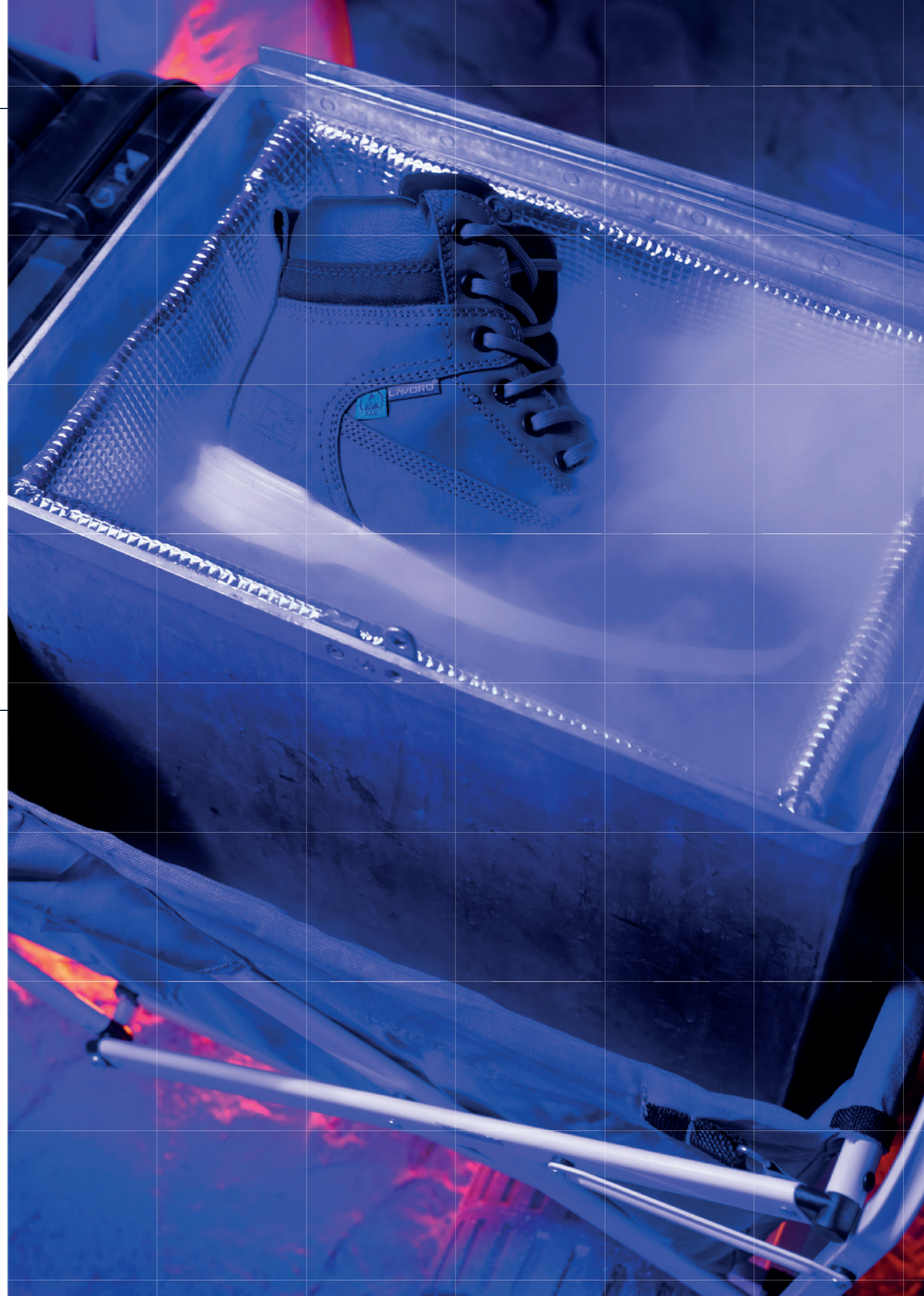
**DIRECT INJECTED PU + RUBBER**  
(PT) PU Diretamente Injetado + Borracha  
(ES) PU inyectado directo + Caucho  
(FR) PU Injecté Directement + Nitril  
(DE) Direkt Eingespritztes PU + Gummi  
(NL) Direct geïnjecteerd PU + Rubber

**UPPER RAW MATERIAL**

**PINK NUBUCK LEATHER**  
(PT) Pele Nubuck Rosa  
(ES) Cuero Nobuck Rosa  
(FR) Cuir Nubuck Rose  
(DE) Rosa Nubuck Leder  
(NL) Roze Nubuckleer

**LINING MATERIAL**

**BLACK PACIFIC TEXTILE**  
(PT) Têxtil Pacific preto  
(ES) Textil Pacific negro  
(FR) Textile Pacific noir  
(DE) Schwarz Pacific textil  
(NL) Textiel Pacific zwart



# ACCESSORIES

## SPODOS INSOLES

SIZE 36 - 47



THE FLAT FOOT AND THE FOOT CAVITY ARE ANATOMICAL VARIATIONS OF THE INNER ARCH OF THE FOOT. THESE VARIATIONS CAUSE LOSS OF EFFICIENCY IN DAMPING AND SHOCK ABSORPTION.



FEATURES

**HEALTH OF YOUR FEET:**

- ANTI-MICROBIAL
- ACTIVE CARBON
- THERMOREGULATORY EFFECT
- STEAM PERMEABLE
- 100% BREATHABLE
- WASHABLE

**THINKING ABOUT COMFORT:**

- ANTI-FATIGUE
- EXTRA LIGHT
- HIGH ABSORPTION CAPACITY
- HIGH MEMORY CAPACITY
- DIFFERENT DENSITIES

**ECOFRIENDLY:**

- MADE FROM RECYCLED MATERIALS

**OTHER FEATURES:**

- RESISTANT TO ABRASION
- ANTI-STATIC

## CHROMIUM FREE

9999.12

SIZE 36 - 47

- CORK AND NATURAL LEATHER
- BREATHABLE
- THERMOREGULATORY EFFECT



## LAVORO X-MAX

9999.13

SIZE 36 - 47



## PRO SOCKS

9999.79

SIZE 35 - 38 / 39 - 42 / 43 - 45



## ECO SOCKS

9999.73

SIZE 38 - 42 / 43 - 47



SELECTED PREMIUM MATERIALS AND ACCURATE DESIGN TO KEEP YOUR FEET FEELING COOL, DRY AND FRESHER FOR LONGER.

## SOCKS DISPLAY



## SHOE POLISH

9999.90

SIZE 100MM / 130MM / 155MM / 200MM



## SHOE POLISH

9999.35



AS EVEN MINOR IRRITATIONS CAN REDUCE MOBILITY OR PRODUCTIVITY AND INCREASE ABSENTEEISM, IT IS IMPORTANT, UNDER ANY FOOT HEALTH CIRCUMSTANCE, TO GET ADVICE FROM A PODIATRIST - WHICH **LAVORO** MAKES AVAILABLE THROUGH **SPODOS**, ITS FOOT SCIENCE CENTER. AFTER ALL, AS A CELEBRATED PROVERB SAYS,

**“EVEN THE TALLEST TOWERS BEGIN ON THE GROUND”**



## SPODOS HELPS COMPANIES TO TAKE CARE OF THE QUALITY OF LIFE OF THE FOOT IN THE WORK CONTEXT:

1. HELPS TO DESIGN THE MOST APPROPRIATE MODELS FOR EACH WORK ENVIRONMENT;
2. ACCOMPANY THE PRODUCTION OF EACH MODEL;
3. IT CHARACTERIZES THE WORK ENVIRONMENTS AND ADVISES THE COMPANIES AFTER IDENTIFYING THE NEEDS OF EACH ONE;
4. ANALYZE FEET OF PROFESSIONAL GROUPS (USING PRESSURE PLATFORM, SPODOS PRINT, AND 3D SCANNING, SPODOS 3D);
5. DIAGNOSE PATHOLOGIES OF THE FOOT AND SUGGESTS THERAPIES;
6. RECOMMENDS THE BEST TYPOLOGY OF FOOTWEAR THAT SUITS THE CHALLENGES OF THE DIFFERENT PROFESSIONS;
7. SUPERVISES ITS EFFICIENCY IN SITU, TO ENHANCE PROTECTION RATES AS WELL AS THE FEET'S HEALTH.
8. ENCOURAGES TRAINING AND AWARENESS ACTIVITIES.



CLIMA CORK SYSTEM



**CLIMA CORK SYSTEM (CCS)** IS AN EXCLUSIVE SYSTEM OF LAVORO, WHICH ALLOWS THE CREATION OF A NATURAL ENVIRONMENT FOR THE FEET, BOTH IN THE FIELD OF TEMPERATURE AND THEIR ACCOMMODATION IN SHOES.

THROUGH THE INCLUSION OF AN INSULATING LAYER OF CORK BETWEEN THE SOLE AND THE INSOLE, **CLIMA CORK SYSTEM** REGULATES THE HEAT AND COLD INSIDE THE FOOTWEAR AND GIVES EXTRA COMFORT. THE CORK ALLOWS THE CREATION OF A KIND OF "FOOTPRINT", FAVORS ITS ADAPTATION TO THE SHOE, AND CONTRIBUTES TO THE REDUCTION OF FATIGUE, BY BENEFITING THE UNIFORM DISTRIBUTION OF THE WEIGHT.



## SIZE CHART

Tabela de Tamanhos | Carta del Tamaño | Tableau des tailles | Größentabelle | Maattabel

MONDOPOINT R2 (MM)	EU	UK
202	33	1 1/2
210	34	2
217	35	2 1/2
225	36	3
232	37	4
240	38	5
247	39	6
255	40	6 1/2
262	41	7
270	42	8
277	43	9
285	44	10
292	45	10 1/2
300	46	11
307	47	12
315	48	13
322	49	14
330	50	14 1/2
337	51	15
345	52	16
352	53	17

## SAFETY FOOTWEAR STANDARDS

### EN ISO 20345:2011

**SB** (SAFETY BASIC) – 200J (JOULE) TOECAP PROTECTION.

**S1** – SAME AS **SB** + CLOSED HEEL, ANTISTATIC PROTECTION AND ENERGY ABSORPTION IN THE HEEL.

**S2** – SAME AS **S1** + WATERPROOF EXTERIOR TO PREVENT WATER PENETRATION.

**S3** – SAME AS **S2** + MIDSOLE PENETRATION RESISTANCE TO PREVENT SHARP OBJECTS FROM PENETRATING THE FOOTWEAR AND DAMAGING YOUR FOOT.

### EN ISO 20345:2022

**S6** – NEW RATING INTRODUCED BY THE NEW NORM (20345:2022). SAME AS **S2** + WATER RESISTANCE FOR THE WHOLE PIECE OF FOOTWEAR.

**S7** – NEW RATING INTRODUCED BY THE NEW NORM (20345:2022). SAME AS **S3** + WATER RESISTANCE FOR THE WHOLE PIECE OF FOOTWEAR.

## SLIP-RESISTANCE RATINGS

### EN ISO 20345:2011

**SRA** – TESTED ON CERAMIC TILE WETTED WITH DILUTE SOAP SOLUTION.

**SRB** – TESTED ON SMOOTH STEEL WITH GLYCEROL;

**SRC** – TESTED UNDER BOTH THE ABOVE CONDITIONS.

### EN ISO 20345:2022

**SR** – SLIP RESISTANCE – ON CERAMIC TILE FLOOR WITH GLYCERINE.

**Ø** – HAS NOT BEEN TESTED ACCORDING TO THIS STANDARD AS IT OFFERS STUDS OR SPIKES, OR IS FOR USE WITHIN SPECIAL WORKPLACES AND IS THEREFORE NOT APPLICABLE.

## ADDITIONAL REQUIREMENTS

**A** – ANTISTATIC – PROTECTS AGAINST STATIC ELECTRICAL CHARGES.

**AN** – ANKLE PROTECTION.

**C** – PARTIALLY CONDUCTIVE FOOTWEAR.

**CI** – COLD INSULATION

**CR** – CUT-RESISTANT UPPER

**E** – ENERGY ABSORPTION OF SEAT REGION

**FO** – RESISTANCE TO FUEL OIL

**HI** – HOT INSULATION

**HRO** – RESISTANCE TO HOT CONTACT AT 300°C.

**LG** – LADDER GRIP OUTSOLE.

**M** – METATARSAL PROTECTION (IMPACTS UP TO 100J)

**P** – PERFORATION RESISTANCE (METAL).

**PL** – PENETRATION RESISTANCE (NON-METAL) – PENETRATION TESTED WITH LARGE NAIL (Ø 4,5MM)

**PS** – PENETRATION RESISTANCE (NON-METAL) – PENETRATION TESTED WITH SMALL NAIL (Ø 3,0MM)

**SC** – SCUFF CAP ABRASION.

**WPA** – WATER PENETRATION AND ABSORPTION.

**WR** – WATER-RESISTANT W/ WATERPROOF MEMBRANE.



LAVORO  
ENGINEERING LIFE

# LAVORO

ENGINEERING LIFE



LAVORO EUROPE  
SOL-PINHEIRO  
4810-718  
GUIMARÃES - PORTUGAL  
GPS. N 41° 25' 04" | W 08° 17' 29"  
T. +351 253 776 666  
F. +351 253 140 905  
INFO@LAVOROEUROPE.COM

ICC - Ind. e Comercio de Calçado S  
NIF: 501694200  
Capital social: €1 416 495,00  
Inscrita na C.R.C. Guimarães  
S.O.B. n.º 2495



centro tecnológico  
do calçado de portugal



Prüf- und Forschungsinstitut  
Pirmasens e.V.



UNIAO EUROPEIA  
Fundo Europeu  
de Desenvolvimento Regional



ENTIDAD ASOCIADA



In the interest of product development LAVORO reserves the right to change or amend the specifications of the products, without previous notice.

V1 OCT 2023