

VelillaGroup.

HOSPITALITY

Summary

1. About us
2. Our brands
3. Hospitality
4. Annexes



HOSPITALITY

1.0

ABOUT US



VELILLA GROUP

Velilla Group is a Spanish company **with more than 70 years of experience** in the textile industry.

As workwear specialists, we work side by side with our distributors to offer the best product mix to all workers.

We place at our clients disposal a wide variety of garments for workers through our three big international brands: **Velilla, V-Pro and Mukua.**

Our commitment and our constant evolution has allowed us to become a reference within the Spanish market. We are leaders with annual sales that surpass **10 million units.**

More than 180 people work every day with commitment and professionalism, promoting teamwork and market leadership.

“Our goal is to provide the best service to our clients, We grow together and move forward for you”.



VELILLA GROUP

Know more about us in the following video:



HOSPITALITY

2.0

OUR BRANDS



OUR BRANDS

velilla

"The experience of dressing workers"

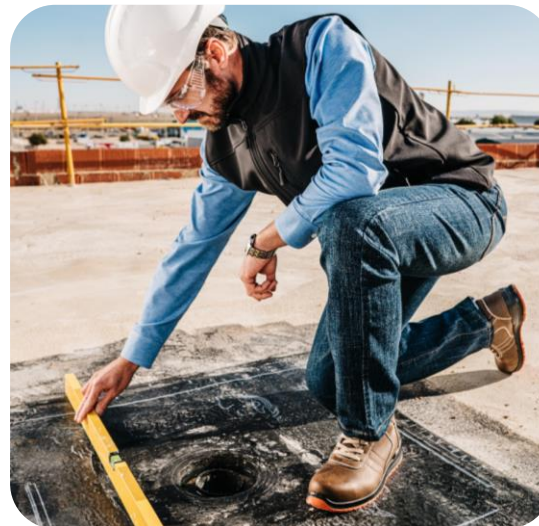
- Specialized in **workwear**
- **More than 70 years of experience** and leader in the labour uniform sector
- **6 major categories:** High Visibility, Technical Garments, Industry, Food Industry, Healthcare & Services and Hospitality.



V/PRO

"The most reliable protection"

- Specialized in **safety footwear**
- New strategy and **constantly growing range**
- **Professional and modern**



MUKUA

"The canvas of your creations"

- Specialized in **promotional garments**
- **Inspirational, modern and creative**
- Our purpose is to create garments that inspire our customers



velilla

V/PRO™

MUKUA

HOSPITALITY

3.0

HOSPITALITY





405209

SHORT-SLEEVE MICROFIBER KITCHEN JACKET WITH BACK MADE OF COOLMAX FABRIC



Back fabric



Smart[®]
Micro+fiber
Smart Antimicrobial Protection

COOLMAX[®]



Details

- Liquid repellent fabric with antibacterial treatment
- Asymmetrical front closure with hidden automatic buttons
- Neckband collar
- One piece back made with Coolmax breathable fabric
- Tailored-style sleeves
- One pocket: 1 patch pocket on left sleeve with two compartments

Composition

FRONT: MICROFIBER. 100% POLYESTER / 140 gsm

BACK: COOLMAX. 100% POLYESTER / 135 gsm

Sizes

XS / S / M / L / XL / 2XL / 3XL

Colours



07 White / 00 Black

405210

LONG-SLEEVE MICROFIBER KITCHEN JACKET WITH BACK MADE OF COOLMAX FABRIC



Back fabric



Smart[®]
Micro+fiber
Smart Antimicrobial Protection

COOLMAX[®]

Details

- Liquid repellent fabric with antibacterial treatment
- Asymmetrical front closure with hidden automatic buttons
- Neckband collar
- One piece back made with Coolmax breathable fabric
- Tailored-style sleeves with round cuff opening
- One pocket: 1 patch pocket on left sleeve with two compartments



Composition

FRONT: MICROFIBER. 100% POLYESTER / 140 gsm

BACK: COOLMAX. 100% POLYESTER / 135 gsm

Sizes

XS / S / M / L / XL / 2XL / 3XL

Colours



07 White / 00 Black

405204

KITCHEN JACKET WITH BREATHABLE FABRIC



Back fabric

 100% Cotton



GESDRY +

Details

- Covered asymmetrical front zip with snap button
- Mao collar
- Back made of Gesdry+ fabric
- Tailored sleeves with opening at cuffs
- Without side seam
- One pocket: 1 patch pocket on left sleeve

Composition

FRONT: TWILL. 100% EGYPTIAN COTTON / 180 gsm
 BACK: GESDRY +. 100% POLYESTER / 135 gsm

Sizes

46 / 48 / 50 / 52 / 54 / 56 / 58 /
 60 / 62 / 64

Colours



07 White / 00 Black



533001

SCRUB TROUSERS WITH WAIST TIE



Details

- Elastic waistband
- Ajustable waist tie
- Two pockets: 2 French pockets

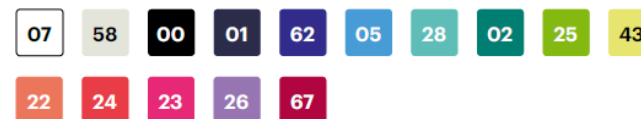
Composition

TWILL. 65% POLYESTER - 35% COTTON / 190 gsm

Sizes

2XS / XS / S / M / L / XL / 2XL /
3XL / 4XL **NEW SIZES**

Colours



07 White / 58 Ice Grey / 00 Black / 01 Dark Blue / 62 Ultramarine / 05 Sky Blue /
28 Turquoise / 02 Green / 25 Lime Green / 43 Light Yellow / 22 Light Orange /
24 Coral Red / 23 Fuchsia / 26 Purple / 67 Burgundy

404208

SHORT WAITER APRON



Sizes

One size

Composition

TWILL. 65% POLYESTER - 35% COTTON / 190 gsm

Details

- Adjustable waist ties
- Available in 25 colours
- **Without pockets**
- *Measurements:* Length 82 cm - Width 85,5 cm

Colours



07 White / 58 Ice Grey / 08 Grey / 00 Black / 01 Dark Blue / 09 Deep Ultramarine / 62 Ultramarine / 05 Sky Blue / 28 Turquoise / 02 Green / 25 Lime Green / 04 Forest Green / 03 Hunter's Green / 06 Beige / 43 Light Yellow / 20 Neon Yellow / 17 Yellow / 22 Light Orange / 19 Neon Orange / 16 Orange / 12 Red / 24 Coral Red / 23 Fuchsia / 18 Maroon / 26 Purple



404202 LONG APRON



Details

- Adjustable waist ties
- Available in 25 colours
- Four pockets:
 - 1 pocket with four compartments, with space for pen, notebook and PDA.
- *Measurements:* Length 29 cm - Width 60 cm
- *Pocket measurements:* Length 18 cm - Width 60 cm

Colours



07 White / 58 Ice Grey / 08 Grey / 00 Black / 01 Dark Blue / 09 Deep Ultramarine / 62 Ultramarine / 05 Sky Blue / 28 Turquoise / 02 Green / 25 Lime Green / 04 Forest Green / 03 Hunter's Green / 06 Beige / 43 Light Yellow / 20 Neon Yellow / 17 Yellow / 22 Light Orange / 19 Neon Orange / 16 Orange / 12 Red / 24 Coral Red / 23 Fuchsia / 18 Maroon / 26 Purple

Sizes

One size

Composition

TWILL. 65% POLYESTER - 35% COTTON / 190 gsm

404210B TWO-TONE BIB APRON



Sizes
One size

Composition
Twill. 65% POLYESTER - 35% COTTON / 190 gsm

Details

- Adjustable ivory colour cotton webbing straps
- Knotted neck strap, adjustable
- Adjustable waist ties
- 25 available colour combinations. The base colour will always be black
- Three pockets:
 - 1 chest pocket, with pen compartment. 1
 - Front lower pocket, with an interior pocket on the right side
- *Measurements:* Length 81 cm - Width 75 cm
- *Chest pocket measurements :* Length 16,5 cm - Width 18,5 cm
- *Lower pocket measurements :* Length 28,5 cm - Width 19,6 cm



Colours



07 White / 58 Ice Grey / 08 Grey / 00 Black / 01 Dark Blue / 09 Deep Ultramarine / 62 Ultramarine / 05 Sky Blue / 28 Turquoise / 02 Green / 25 Lime Green / 04 Forest Green / 03 Hunter's Green / 06 Beige / 43 Light Yellow / 20 Neon Yellow / 17 Yellow / 22 Light Orange / 19 Neon Orange / 16 Orange / 12 Red / 24 Coral Red / 23 Fuchsia / 18 Maroon / 26 Purple

404212

SHORT BUTTONED BIB APRON



Sizes

One size

Composition

TWILL. 65% POLYESTER - 35% COTTON / 190 gsm

Details

- Adjustable neckband with buttons (two positions)
- Adjustable waist ties
- Available in 25 colours
- Three pockets:
 - 1 chest pocket, 1 middle pocket with two compartments
- *Measurements:* Length 75 cm - Width 80 cm
- *Chest pocket measurements :* Length 12 cm - Width 9 cm
- *Lower pocket measurements :* Length 24 cm - Width 36 cm

Colours



07 White / 58 Ice Grey / 08 Grey / 00 Black / 01 Dark Blue / 09 Deep Ultramarine / 62 Ultramarine / 05 Sky Blue / 28 Turquoise / 02 Green / 25 Lime Green / 04 Forest Green / 03 Hunter's Green / 06 Beige / 43 Light Yellow / 20 Neon Yellow / 17 Yellow / 22 Light Orange / 19 Neon Orange / 16 Orange / 12 Red / 24 Coral Red / 23 Fuchsia / 18 Maroon / 26 Purple



404203 BIB APRON WITH POCKET



Details

- Adjustable waist ties
- Adjustable neckband with buckle
- Available in 25 colours
- One pocket: Front pocket
- *Measurements:* Length 91 cm - Width 74 cm
- *Pocket measurements :* Length 23 cm - Width 33 cm

Colours



07 White / 58 Ice Grey / 08 Grey / 00 Black / 01 Dark Blue / 09 Deep Ultramarine / 62 Ultramarine / 05 Sky Blue / 28 Turquoise / 02 Green / 25 Lime Green / 04 Forest Green / 03 Hunter's Green / 06 Beige / 43 Light Yellow / 20 Neon Yellow / 17 Yellow / 22 Light Orange / 19 Neon Orange / 16 Orange / 12 Red / 24 Coral Red / 23 Fuchsia / 18 Maroon / 26 Purple

Sizes

One size

Composition

TWILL. 65% POLYESTER - 35% COTTON / 190 gsm

404001

SHORT APRON WITH POCKET



Details

- Adjustable waist ties
- Available in 25 colours
- One pocket: 1 Front pocket
- *Measurements:* Length 39,5 cm - Width 72 cm
- *Pocket measurements :* Length 18 cm - Width 26 cm

Colours



07 White / 58 Ice Grey / 08 Grey / 00 Black / 01 Dark Blue / 09 Deep Ultramarine / 62 Ultramarine / 05 Sky Blue / 28 Turquoise / 02 Green / 25 Lime Green / 04 Forest Green / 03 Hunter's Green / 06 Beige / 43 Light Yellow / 20 Neon Yellow / 17 Yellow / 22 Light Orange / 19 Neon Orange / 16 Orange / 12 Red / 24 Coral Red / 23 Fuchsia / 18 Maroon / 26 Purple

Sizes

One size

TWILL. 65% POLYESTER - 35% COTTON / 190 gsm

405004S

MEN'S LONG SLEEVE STRETCH OXFORD SHIRT*



Sizes

S / M / L / XL / 2XL / 3XL

Colours



07 White / 05 Sky Blue



Details

- English placket
- Buttoned shirt collar
- Button-closure round cuff
- Spare buttons
- Fitted back dart
- Stretch fabric

*Also available for women (Ref.: 405005S);

Sizes from XS to 2XL

Composition

OXFORD. 50% COTTON - 45% POLYESTER - 5% ELASTANE / 180 gsm

405007S

WOMEN'S LONG SLEEVE STRETCH DENIM SHIRT*



Sizes

XS / S / M / L / XL / 2XL

Colours



63 Denim

Details

- English placket
- Italian-style shirt collar
- Back and front yoke
- Button-closure sleeves with openings (2 positions)
- Spare buttons
- Stretch fabric
- Two pockets:
 - 2 patch pockets with buttons and cover flaps

*Also available for men (Ref.: 405006S);

Sizes from S to 3XL

Composition

OXFORD. 50% COTTON - 45% POLYESTER - 5% ELASTANE / 180 gsm



405503

WAITRESS POLO SHIRT*



Sizes

S / M / L / XL / 2XL

Colours



07 White / 00 Black / 61 Navy Blue / 56 Bright Red

velilla
Hospitality



Details

- Front buttons
- Ribbed collar and sleeve cuffs
- With neck tape
- Side slits

*Also available for men (Ref.: 405504); Sizes from S to 2XL

Composition

PIQUÉ. 100% POLYESTER / 160 gsm

403010S

UNISEX STRETCH CHINO TROUSERS

NEW



Sizes

34 / 36 / 38 / 40 / 42 / 44 / 46 /
48 / 50 / 52 / 54 / 56

Colours



00 Black / 61 Navy Blue / 46 Sandy Beige

Details

- Front zip with button
- Double safety seam
- Back Darts
- Soft touch
- Five pockets:
2 French pockets, 1 watch pocket, 2 back welt pockets with button

Composition

STRETCH. 98% COTTON - 2% ELASTANE / 260 gsm



403011S

UNISEX STRETCH CHINO SHORTS

NEW



Sizes

34 / 36 / 38 / 40 / 42 / 44 / 46 /
48 / 50 / 52 / 54 / 56

Colours



00 Black / 61 Navy Blue / 46 Sandy Beige

Details

- Front zip with button
- Double safety seam
- Back Darts
- Soft touch
- Five pockets:
2 French pockets, 1 watch pocket, 2 back welt pockets with button

Composition

STRETCH. 98% COTTON - 2% ELASTANE / 260 gsm



403011S
UNISEX STRETCH CHINO SHORTS



405004S Men's
long sleeve stretch
Oxford shirt

405209 SHORT-SLEEVE MICROFIBER
KITCHEN JACKET WITH BACK MADE OF
COOLMAX FABRIC



velilla
Hospitality

4.0

ANNEXES



COLOUR CHART

PLAIN COLOURS

07 WHITE	58 ICE GREY	59 PEARL GREY	08 GREY	42 DARK GREY	00 BLACK	61 NAVY BLUE	01 DARK BLUE	10 PETROL BLUE
09 DEEP ULTRAMARINE	62 ULTRAMARINE	31 PERSIAN BLUE N	65 ROYAL BLUE	05 SKY BLUE	55 LIGHT BLUE	15 MARITIME BLUE N	28 LIGHT TURQUOISE	27 TURQUOISE
39 CYAN BLUE	02 GREEN	30 MINT BLUE	32 APPLE GREEN N	25 LIME GREEN	14 EMERALD GREEN N	29 GRASS GREEN	04 FOREST GREEN	03 HUNTER'S GREEN
49 BROWN	06 BEIGE	46 SANDY BEIGE	47 LIGHT BEIGE	43 LIGHT YELLOW	17 YELLOW	21 MUSTARD	22 LIGHT ORANGE	54 TANGERINE
16 ORANGE	57 BRICK RED	12 RED	56 BRIGHT RED	24 CORAL RED	53 STRAWBERRY PINK	37 MAGENTA PINK N	23 FUCHSIA	34 BOUGAINVILLEA N
26 PURPLE	68 AUBERGINE	18 MAROON	67 BURGUNDY					

OTHER COLOURS

48 MARBLED GREY	44 GREY MARL	45 SAND MARL	78 MARBLED DARK GREY	71 HEATHER BLUE	79 HEATHER DEEP ULTRAMARINE	76 HEATHER RED	77 HEATHER MAROON
64 DARK DENIM	63 DENIM						
00 BLACK CHECKS	01 DARK BLUE CHECKS	13 WHITE / BLUE HOUNDSTOOTH	52 BLACK CHECKS	51 MAROON STRIPES	50 BLACK STRIPES		

NEON COLOURS

20 NEON YELLOW	19 NEON ORANGE

N NEW COLOUR

MEASUREMENTS TABLES

UNISEX / MEN

BOTTOMS AND DUNGAREES

American Sizing	XS		S		M		L		XL		2XL		3XL		4XL		5XL	
European Sizing		34	36	38	40	42	44	46	48	50	52	54	56	58	60	62	64	66
Healthcare Sizing	0		2		4		6		8		10		12					
Waist Circumference C	62-66	66-70	70-74	74-78	78-82	82-86	86-90	90-94	94-98	98-102	102-106	106-111	111-117	117-123	123-126	126-129	129-132	132-135

OVERALLS

American Sizing	S		M		L		XL		2XL		3XL					
European Sizing			48	50	52	54	56	58	60	62	64	66	68	70	72	
Chest Circumference B	82-90	90-94	94-98	98-102	102-106	106-110	110-114	114-118	118-123	123-129	129-135	135-138	138-141	141-144	144-147	
Waist Circumference C	70-78	78-82	82-86	86-90	90-94	94-98	98-102	102-106	106-111	111-117	117-123	123-126	126-129	129-132	132-135	

TOPS AND LAB COATS

American Sizing	2XS		XS		S		M		L		XL		2XL		3XL		4XL		5XL	
European Sizing		38	40	42	44	46	48	50	52	54	56	58	60	62	64					
Healthcare Sizing	0		2		4		6		8		10		12							
Chest Circumference B	66-74	74-78	78-82	82-86	86-90	90-94	94-98	98-102	102-106	106-110	110-114	114-118	118-123	123-129	129-135	135-141	141-147			
Waist Circumference C	54-62	62-66	66-70	70-74	74-78	78-82	82-86	86-90	90-94	94-98	98-102	102-106	106-111	111-117	117-123	123-129	129-135			
Neck outline (Shirts)			37-38		39-40		41-42		43-44		45-46		47-48							

WOMEN

BOTTOMS

American Sizing	XS		S		M		L		XL		2XL		3XL		4XL	
European Sizing		34	36	38	40	42	44	46	48	50	52	54	56	58	60	
Hip Circumference D	86-90	90-94	94-98	98-102	102-106	106-110	110-114	114-119	119-124	124-129	129-134	134-139	139-144	144-149		

TOPS AND LAB COATS

American Sizing	XS		S		M		L		XL		2XL		3XL		4XL	
European Sizing		34	36	38	40	42	44	46	48	50	52	54	56	58	60	
Chest Circumference B	78-82	82-86	86-90	90-94	94-98	98-102	102-106	106-111	111-116	116-121	121-126	126-131	131-136	136-141		
Waist Circumference C	62-66	66-70	70-74	74-78	78-82	82-86	86-90	90-95	95-100	100-105	105-110	110-115	115-120	120-125		

UNISEX

HATS

Sizing	1		2		3	
Head Circumference A	56-57		58-59		60-61	



velilla **V/PRO™** **MUKUA**

VelillaGroup.

Oficina Central Madrid

Calle Juan de la Cierva, 19.
28823, Coslada, Madrid
España

Centro Logístico

Avda. 8 Parcela 66.
Polígono Industrial Romica
02006, Albacete
España

Oficina Portugal

Rua Joaquin Sotto Mayor, 135
3080-209, Figueira da Foz
Portugal