

VelillaGroup.

**Healthcare and
Services**

Summary

1. About us
2. Our brands
3. Healthcare and Services
 - Microfiber
 - Stretch
 - Lab coats
 - Virids sanitary clogs
4. Annexes
 - Colour chart
 - Measurements tables



1.0

ABOUT US



VELILLA GROUP

Velilla Group is a Spanish company **with more than 70 years of experience** in the textile industry.

As workwear specialists, we work side by side with our distributors to offer the best product mix to all workers.

We place at our clients disposal a wide variety of garments for workers through our three big international brands: **Velilla, V-Pro and Mukua.**

Our commitment and our constant evolution has allowed us to become a reference within the Spanish market. We are leaders with annual sales that surpass **10 million units.**

More than 180 people work every day with commitment and professionalism, promoting teamwork and market leadership.

“Our goal is to provide the best service to our clients, We grow together and move forward for you”.



VELILLA GROUP

Know more about us in the following video:



2.0

OUR BRANDS



OUR BRANDS

velilla

"The experience of dressing workers"

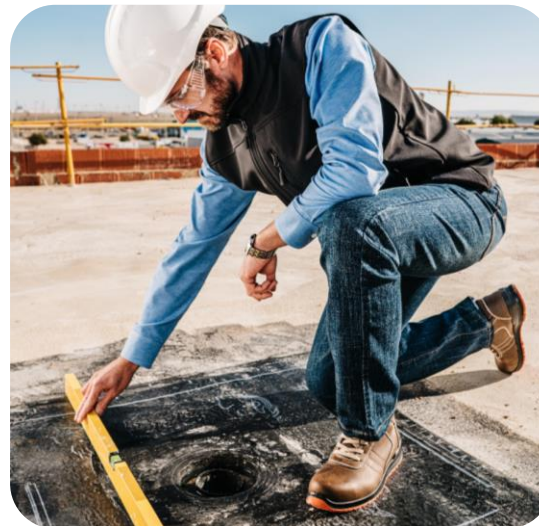
- Specialized in **workwear**
- **More than 70 years of experience** and leader in the labour uniform sector
- **6 major categories:** High Visibility, Technical Garments, Industry, Food Industry, Healthcare & Services and Hospitality.



V/PRO

"The most reliable protection"

- Specialized in **safety footwear**
- New strategy and **constantly growing range**
- **Professional and modern**



MUKUA

"The canvas of your creations"

- Specialized in **promotional garments**
- **Inspirational, modern and creative**
- Our purpose is to create garments that inspire our customers



velilla

V/PRO™

MUKUA

3.0

HEALTHCARE AND SERVICES



535207 + 533007

SHORT SLEEVE MICROFIBER SCRUB TOP+ MICROFIBER SCRUB TROUSERS

Microfiber scrub cap (Ref.:534007)



Sizes

XS, S, M, L, XL, 2XL, 3XL

Colours



07 White / 00 Black / 31 Persian Blue / 15 Maritime Blue / 39 Cyan Blue / 30 Mint / 14 Emerald Green / 21 Mustard / 54 Tangerine / 53 Strawberry Pink / 34 Bougainvillea

Details

Short sleeve microfiber scrub top:

- V-neck
- Side openings
- Liquid repellent and antibacterial fabric
- Three pockets:
 - 2 lower patch pockets, one of them with an inner pocket

Microfiber scrub trousers:

- Elastic waistband
- Adjustable with straps
- Liquid repellent fabric with antibacterial treatment
- Three pockets:
 - 2 French pockets
 - 1 back patch pocket

Composition

MICROFIBER. 100% POLYESTER / 140 gsm



535206S + 533006S

SHORT-SLEEVE STRETCH SCRUB TOP+ STRETCH SCRUB TROUSERS

Stretch scrub cap (Ref.:534006S)



Sizes

XS, S, M, L, XL, 2XL, 3XL

Colours



07 White / 42 Dark Grey / 00 Black / 61 Navy Blue / 65 Royal Blue / 05 Sky Blue /
28 Light Turquoise / 02 Green / 32 Apple Green / 47 Light Beige / 12 Red /
37 Magenta Pink / 68 Aubergine

Details

Short sleeve stretch scrub top:

- V-neck
- Side openings
- Back yoke

Double backstitching

- Four pockets:

1 patch breast pocket

2 lower patch pockets, one of them has a double inner pocket with compartments for phone and pen

Stretch scrub trousers:

- Elastic waistband
- Adjustable with straps
- Double backstitching
- Three pockets:

2 French pockets sewn on inside bottom

1 right leg double pocket with three compartments

Composition

STRETCH. 62% POLYESTER - 34% COTTON - 4% ELASTANE / 185 gsm



539005

100% COTTON UNISEX LAB COAT



Sizes

XS, S, M, L, XL, 2XL, 3XL

Colours



07 White

Details

- Front closure with automatic buttons hidden with a cover flap
- Back opening
- Elastic cuffs
- Safety seam at the back
- Three pockets: 3 patch pockets



Composition

SERGE. 100% COTTON / 190 gsm

539007S

WOMEN'S STRETCH LAB COAT WITH MAO COLLAR*



Sizes

XS, S, M, L, XL, 2XL

Colours



07 White

Details

- Front closure with automatic buttons
- Mao collar
- Two-piece tailored sleeve
- Back yoke
- Back opening
- Semi-fitted
- Front selvedge
- Back yoke seam and safety backstitching
- Three pockets:
 - 1 chest welt pocket
 - 2 lower patch pocket

Composition

STRETCH. 62% POLYESTER - 34% COTTON - 4% ELASTANE / 185 gsm

*Also available for men (Ref: 539006S; Sizes from S to 3XL)



539009S

WOMEN'S SHORT STRETCH LAB COAT*



Sizes

XS, S, M, L, XL, 2XL

Colours



07 White

Details

- Front closure with buttons
- Two-piece tailored sleeve
- Back opening
- Semi-fitted
- Double black and front selvedge
- Darts
- Back safety seam
- Three pockets: 3 welt pocket

Composition

STRETCH. 62% POLYESTER - 34% COTTON - 4% ELASTANE / 185 gsm

*Also available for men (Ref: 539008S; Sizes from S to 3XL)

velilla
Healthcare
and Services

FABRIC
STRETCH®
Smart fabric for comfort

539010

MICROFIBER LAB COAT



NEW

Sizes

XS, S, M, L, XL, 2XL, 3XL

Colours



07 White

Details

- Front closure with snap buttons
- Shirt collar
- Back opening
- Safety stitching on the back
- Fabric with anti bacterial and liquid repellent treatment
- Three pockets: 3 patch pockets

Composition

MICROFIBER. 100% POLYESTER / 140 gsm

velilla
Healthcare
and Services

Smart[®]
Microfiber
Smart Antimicrobial Protection

SILVER⁺
protection

707501 VIRDS SANITARY CLOGS



Details

- Ultralight
- Inner sole with anatomical system
- Slip-resistant (maximum coefficient SRC level)
- Foldable back strap
- Breathable side holes
- Removable Sanitized® antibacterial insole
- Norm: UNE ISO 20347:2012 OB E SRC

Composition

100% EVA MATERIAL / 185 gsm

Equivalences Size

Europe	UK
35	3
36	3 ^{1/2}
37	4 ^{1/2}
38	5
39	5 ^{1/2} - 6
40	6 ^{1/2} - 7
41	7 ^{1/2}
42	8
43	9
44	9 ^{1/2} - 10
45	10 ^{1/2}
46	11 ^{1/2}
47	12

velilla
Healthcare
and Services

DESIGNED
& MADE
IN ITALY



UNE ISO
20347:2012
OB E SRC



WASHABLE IN WASHING
MACHINE

Sizes

35 - 47

Colours



07 White / 00 Black / 05 Sky Blue

539010 MICROFIBER LAB COAT



535207 Short sleeve microfiber scrub top

535206S SHORT SLEEVE SCRUB TOP



533006S Stretch scrub trouser

velilla
Healthcare
and Services

4.0

ANNEXES



COLOUR CHART

PLAIN COLOURS

07 WHITE	58 ICE GREY	59 PEARL GREY	08 GREY	42 DARK GREY	00 BLACK	61 NAVY BLUE	01 DARK BLUE	10 PETROL BLUE
09 DEEP ULTRAMARINE	62 ULTRAMARINE	31 PERSIAN BLUE N	65 ROYAL BLUE	05 SKY BLUE	55 LIGHT BLUE	15 MARITIME BLUE N	28 LIGHT TURQUOISE	27 TURQUOISE
39 CYAN BLUE	02 GREEN	30 MINT BLUE	32 APPLE GREEN N	25 LIME GREEN	14 EMERALD GREEN N	29 GRASS GREEN	04 FOREST GREEN	03 HUNTER'S GREEN
49 BROWN	06 BEIGE	46 SANDY BEIGE	47 LIGHT BEIGE	43 LIGHT YELLOW	17 YELLOW	21 MUSTARD	22 LIGHT ORANGE	54 TANGERINE
16 ORANGE	57 BRICK RED	12 RED	56 BRIGHT RED	24 CORAL RED	53 STRAWBERRY PINK	37 MAGENTA PINK N	23 FUCHSIA	34 BOUGAINVILLEA N
26 PURPLE	68 AUBERGINE	18 MAROON	67 BURGUNDY					

OTHER COLOURS

48 MARBLED GREY	44 GREY MARL	45 SAND MARL	78 MARBLED DARK GREY	71 HEATHER BLUE	79 HEATHER DEEP ULTRAMARINE	76 HEATHER RED	77 HEATHER MAROON
64 DARK DENIM	63 DENIM						
00 BLACK CHECKS	01 DARK BLUE CHECKS	13 WHITE / BLUE HOUNDSTOOTH	52 BLACK CHECKS	51 MAROON STRIPES	50 BLACK STRIPES		

NEON COLOURS

20 NEON YELLOW	19 NEON ORANGE

N NEW COLOUR

MEASUREMENTS TABLES

UNISEX / MEN

BOTTOMS AND DUNGAREES

American Sizing	XS		S		M		L		XL		2XL		3XL		4XL		5XL	
European Sizing		34	36	38	40	42	44	46	48	50	52	54	56	58	60	62	64	66
Healthcare Sizing	0		2		4		6		8		10		12					
Waist Circumference C	62-66	66-70	70-74	74-78	78-82	82-86	86-90	90-94	94-98	98-102	102-106	106-111	111-117	117-123	123-126	126-129	129-132	132-135

OVERALLS

American Sizing	S		M		L		XL		2XL		3XL					
European Sizing			48	50	52	54	56	58	60	62	64	66	68	70	72	
Chest Circumference B	82-90	90-94	94-98	98-102	102-106	106-110	110-114	114-118	118-123	123-129	129-135	135-138	138-141	141-144	144-147	
Waist Circumference C	70-78	78-82	82-86	86-90	90-94	94-98	98-102	102-106	106-111	111-117	117-123	123-126	126-129	129-132	132-135	

TOPS AND LAB COATS

American Sizing	2XS	XS		S		M		L		XL		2XL		3XL		4XL	5XL
European Sizing		38	40	42	44	46	48	50	52	54	56	58	60	62	64		
Healthcare Sizing		0		2		4		6		8		10		12			
Chest Circumference B	66-74	74-78	78-82	82-86	86-90	90-94	94-98	98-102	102-106	106-110	110-114	114-118	118-123	123-129	129-135	135-141	141-147
Waist Circumference C	54-62	62-66	66-70	70-74	74-78	78-82	82-86	86-90	90-94	94-98	98-102	102-106	106-111	111-117	117-123	123-129	129-135
Neck outline (Shirts)			37-38		39-40		41-42		43-44		45-46		47-48				

WOMEN

BOTTOMS

American Sizing	XS	S		M		L		XL		2XL		3XL		4XL
European Sizing	34	36	38	40	42	44	46	48	50	52	54	56	58	60
Hip Circumference D	86-90	90-94	94-98	98-102	102-106	106-110	110-114	114-119	119-124	124-129	129-134	134-139	139-144	144-149

TOPS AND LAB COATS

American Sizing	XS	S		M		L		XL		2XL		3XL		4XL
European Sizing	34	36	38	40	42	44	46	48	50	52	54	56	58	60
Chest Circumference B	78-82	82-86	86-90	90-94	94-98	98-102	102-106	106-111	111-116	116-121	121-126	126-131	131-136	136-141
Waist Circumference C	62-66	66-70	70-74	74-78	78-82	82-86	86-90	90-95	95-100	100-105	105-110	110-115	115-120	120-125

UNISEX

HATS

Sizing	1		2		3	
Head Circumference A	56-57		58-59		60-61	



velilla **V/PRO™** **MUKUA**

VelillaGroup.

Oficina Central Madrid

Calle Juan de la Cierva, 19.
28823, Coslada, Madrid
España

Oficina Portugal

Rua Joaquin Sotto Mayor, 135
3080-209, Figueira da Foz
Portugal

Centro Logístico

Avda. 8 Parcela 66.
Polígono Industrial Romica
02006, Albacete
España