



SS21



SHOES &  
GARMENTS



[monitorbrand.com](http://monitorbrand.com)

## TABLE OF CONTENTS

---

MONITORBRAND - STORY	03
SYMBOLS & SAFETY CLASSIFICATION	08

<b>MONITOR SHOES</b>	<b>14</b>
<b>MONITOR GARMENTS</b>	<b>52</b>

## OTHER BRANDS

---

BIRKENSTOCK	68
SALOMON	76
UNDER ARMOUR	86
SALMING	92
BJÖRN BORG	94
PUMA	100
REEBOK	104
LLOYD	106
IRONMAN	108
ACCESSORIES	110

---

CONTACT DETAILS	112
SALES DISTRICTS	115



### **BÅSTAD GRUPPEN AB**

BOX 1031, SE-262 21 Ängelholm, Sweden

### **OFFICE / CUSTOMER SUPPORT**

Tel. +46 431-732 00, Fax +46 431-730 95

[info@bastadgruppen.com](mailto:info@bastadgruppen.com)

# MONITOR

SAFE AND SMART

## STORY

Not since our hike in the Monitor Mountain Range in Nevada, the day when we got the idea for our footwear. Even back then we had a different mindset. We realized that it was possible to create a new generation of safety footwear based on technical hiking boots. It was the basis for our brand, which we named after the mountain range where we got our inspiration. Monitor Shoes had come into existence. The ability to change mindset. To see what others are not seeing, to break with convention and forge our own path – doing things our own way is the essence of our brand.



## DEVELOPMENT

When developing new products the focus is always on safety and the needs of the user. Considerable experience and an in-depth knowledge of the anatomy of the foot, combined with the latest footwear manufacturing technology, is what forms the basis for the safety footwear of the future.

Carefully selected materials, solid craftsmanship and an innovative mindset ensure technically advanced footwear with features such as low weight, good breathability and shock absorption. Maximum performance and comfort eight hours a day, and longer. Design is another area in which we differ from the rest. We never compromise on quality or functionality. But at the same time we put just as much emphasis into creating a unique visual identity, design and style, which ensures that our products stand out from the crowd. This is probably why Monitor has in a short time become one of Scandinavia's leading manufacturers of safety footwear and clothes. Created for everyone who, just like us, cares about what they have on their feet, and dares to forge their own path.



---

# THE ART OF BEING ONE STEP AHEAD

Innovation without a solid foundation of knowledge is not possible. At Monitor, we always strive to be at the forefront of development. Curiosity and being open to change are two of the tools that we employ. But we also need to be mindful of the needs of our customers, market changes and new trends. We never rest on our laurels and employ smart collaboration and knowledge sharing to retain our position at the forefront of safety footwear and clothes development. This is also the reason why we challenge the norms and forge our own path. If you're like us - then you'll understand exactly how we think.





---

# SAFE AND SMART DESIGN

Our motto Safe & Smart sums up exactly what our design work is all about. That safety always comes first. This is something we never compromise on. Each shoe must have the highest possible rating in its respective protection class. But we attach equal importance to the design and styling of our footwear and clothes. In this work we are inspired by our environment and trends, as well as by new technology and new materials. This provides us with plenty of new opportunities for both aesthetic and functional designs. Our own unique style that we are very proud of.





2021



**NEW**



**LIMITED EDITION**

**AVAILABLE IN MAY**

2021



# SAFETY CLASSIFICATION

	Occupational footwear EN ISO 20347:2012				Safety footwear EN ISO 20345:2011						
CATEGORY PROPERTIES	OB	01	02	04	SB	S1	S1P	S2	S3	S4	S5
Non-slip *3 (SRA / SRB / SRC)	▲▲	▲▲	▲▲	▲▲	▲▲	▲▲	▲▲	▲▲	▲▲	▲▲	▲▲
Toecap					▲▲	▲▲	▲▲	▲▲	▲▲	▲▲	▲▲
Puncture-resistant sole (P)							▲▲		▲▲		▲▲
Closed heel area		▲▲	▲▲			▲▲	▲▲	▲▲	▲▲		
Fuel resistance of sole (FO)					▲▲	▲▲	▲▲	▲▲	▲▲	▲▲	▲▲
Antistatic properties (A)		▲▲	▲▲	▲▲	▲▲	▲▲	▲▲	▲▲	▲▲	▲▲	▲▲
Energy absorption in the heel area (E)		▲▲	▲▲	▲▲	▲▲	▲▲	▲▲	▲▲	▲▲	▲▲	▲▲
Water-resistance			▲▲ <sup>*1</sup>	▲▲ <sup>*2</sup>				▲▲ <sup>*1</sup>	▲▲ <sup>*1</sup>	▲▲ <sup>*2</sup>	▲▲ <sup>*2</sup>
Profiled sole				▲▲					▲▲		▲▲

\*1 Min. 80 min no water penetration

\*2 No water penetration

\*3 Can be SRA, SRB or SRC

Minimum requirement for certification of occupational and safety footwear is the slip resistance provided according to SRA, SRB or SRC

SRA: Slip resistance on ceramic tiles and cleaning agents.

SRB: Slip resistance on steel floor and glycerin.

SRC: (SRA + SRB): Slip resistance on ceramic tiles, cleaning agents, steel floor and glycerin.

HRQ: Heat-resistant outsole that can withstand up to 300 °C for one minute, which can help prevent injury



## CONSTRUCTED GARMENTS



SIZES	C44	C46	C48	C50	C52	C54	C56	C58	C60
CLASSIC MEASURING LIST	76.00	80.00	84.00	88.00	92.00	97.00	102.00	108.00	114.00
CLASSIC MEASURING LIST (LOOSE FIT)	80.00	84.00	88.00	92.00	96.00	101.00	106.00	112.00	118.00

MONITOR SIZES	XS 44-46	S 46-48	M 48-50	L 50-52	XL 52-54	XXL 56-58	XXXL 60-62
WAIST MONITOR RELAXED	70.00	76.00	82.00	88.00	94.00	100.00	106.00
WAIST MONITOR STRETCHED	82.00	88.00	94.00	100.00	106.00	112.00	118.00





# PROPERTIES

# Dyneema®

NEW



## LIGHTWEIGHT

30% lighter than nylon and polyester. 45% lighter than aramid

## STRONG

15x stronger than steel (weight per weight ratio)

## DURABILITY

UV and water-resistant  
Hard-wearing



### SS2

Monitor Safe & Smart SS2 insoles combine cushioning with comfort. The sole is made of dual-density polyurethane with extra shock absorption panels under the heel and forefoot. The middle portion of the sole is built up and provides extra arch support. The upper part is covered with airy fabric.



### OutDry®

OutDry® is a patented waterproofing technology that truly revolutionizes the current standard membrane construction. Only OutDry® uses a waterproof and breathable membrane applied directly to the shoe upper to keep water out and maintain constant breathability.



### Boa®

Boa® is a quick, simple and durable lace system for personalized comfort and uniform closure without pressure points.



### SS2.0

Monitor Safe & Smart SS2.0 Insole with dual shock absorption zones in PU and distinct arch support. ESD-approved.



### THINSULATE®

Heat-insulating Thinsulate™ fibers that are breathable and keep your feet warm.



### MONITEX®

Monitex is a high-tech material designed to be waterproof and windproof. Monitex ensures good breathability to keep your feet dry and comfortable.



### SAFE AND SMART CUSHION CONTROL

Insole with memory foam that absorbs shocks, is breathable and molds to the foot, while also absorbing moisture and odor.



### VIBRAM

The brand was founded by Whiteale Bramani in 1907 and specializes in developing technical soles that are adapted to the application.



### STEEL TOECAP

Protects toes from falling objects and compression.



### ALUMINUM TOECAP

Protects toes from falling objects and compression. Half the weight of steel.



### COMPOSITE TOECAP

Protects toes from falling objects and compression. Lightweight material and no metal to conduct heat or cold.



### WATERPROOF

The shoe has a waterproof membrane. Follow shoe care instructions.



### WATER-REPELLENT

Water-repellent leather/textile.



### WINTER LINING

These shoes have a winter lining to keep feet warm. The choice of sock is also important.



### PENETRATION PROTECTION (STEEL)

Protects against penetration by nails and other objects.



### SOFT PENETRATION PROTECTION

APT protection for a lighter, more flexible shoe.



### PANTZAR APT

Penetration protection is provided by Monitor's new Pantzar APT, which is extremely light, flexible and safe.



### MULTIPLE WIDTHS

Our safety footwear is available in different width fittings. Individual fit for increased comfort and safety.

Monitor's Q fitting is adapted for women and designed to provide optimum comfort for the female foot.



### HYPERTEX (PU Tek technology)

Hypertex employs new technology with threads that have ultra-high resistance to abrasion, woven directly into high-resistance fabric to produce textiles with the ultimate mechanical performance!



### X LIGHT

Extra lightweight safety footwear that provides a sporty and comfortable feeling when walking.



### ESD-GODKÄND

The sole dissipates static electricity in accordance with ESD requirements. 0-35 MΩ



### LADY

Specially selected safety and occupational footwear for women. These shoes have a more feminine fit - for the right size and width.



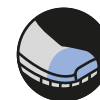
### WED ( WIRE ELECTRICITY DISCHARGE )

Strip with conductive carbon filament. Upon contact with the foot, this feature guarantees antistatic shoes over time, with all types of hygienic insole.



### MONITOR X4

The X-max material in the sole is antistatic, shock-absorbing and has superior breathability, while the FlyFit fabric next to the foot keeps the foot cool.



### NON-METAL

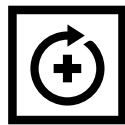
The shoe is 100% metal-free.

# BOA®

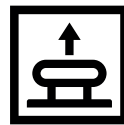
## TURN TO ACHIEVE THE PERFECT FIT EFFORTLESSLY.



PUSH  
IN TO  
ENGAGE



TURN  
TO  
TIGHTEN



PULL UP  
FOR QUICK  
RELEASE



# BOA®



## **AGILITY AND SPEED**

The BOA® Fit System enables faster, more powerful directional changes through a seamless connection between equipment and body.

## **POWER AND PRECISION**

Power without compromising precision, the BOA® Fit System delivers more explosive action and unparalleled accuracy.

## **ENDURANCE AND HEALTH**

Go further, faster and stronger. The BOA® Fit System saves energy by improving circulation and efficiency.

## **DURABILITY AND QUALITY**

Engineered with high-quality, durable materials and rigorously field tested, the BOA® Fit System is guaranteed to perform in any environment.



**WE DESIGN  
SAFETY  
DIFFERENT**

**NEW**

---

**MONITOR**

**ICONIC**





**LIGHTWEIGHT**



**STRENGTH**



**DURABILITY**



# Dyneema®

Our motto Safe & Smart sums up exactly what our design work is all about. That safety always comes first. This is something we never compromise on. Each shoe must have the highest possible rating in its respective protection class. But we attach equal importance to the design and styling of our footwear and clothes. In this work we are inspired by our environment and trends, as well as by new technology and new materials. This provides us with plenty of new opportunities for both aesthetic and functional designs.

We use Dyneema® in our new Monitor Iconic footwear.

- 30% lighter than nylon and polyester. 45% lighter than aramid
- 15x stronger than steel (weight per weight ratio)
- UV and water-resistant.
- Extremely durable



**16**



**FACTORY**

**22**



**GRAND PRIX**



**34**  
**HEAVY DUTY**



**SPORT WORK**

**40**

# 44



# 52

## CONSTRUCTED GARMENTS

# 48



### FACTORY

- 18 M-REBOUND
- 20 MOMENTUM

### GRAND PRIX

- 24 BOUNCE
- 25 V-POWER
- 26 DYNAMIC
- 28 FEATHER LADY
- 30 SIGMA
- 32 ALPHA

### HEAVY DUTY

- 34 HEAVY DUTY

### SPORTWORK

- 40 EN ISO 20347:2012

### FLEX

- 46 FLEX WORK
- 47 FLEX SAFETY

### 365

- 48 365

### GARMENTS

- 52 CONSTRUCTED GARMENTS

### ACCESSORIES

- 62 SOCKS
- 64 INSOLES

# ACCESSORIES



# 62

# MONITOR

## FACTORY



M-REBOUND

MOMENTUM

ESD-rated safety footwear specially developed for industrial flooring and construction. Its focus is on ergonomic comfort, safety and functionality.

These styles are equipped with fantastic outsoles with excellent grip, giving the user a controlled and safe working day.







# M-REBOUND



## MONITOR STONE

EN ISO 20345:2011 S1P SRC ESD

Art: **10055001**    Sizes: **36-48**    Color: **Black**

<b>FIT</b>	Wide
<b>TOECAP</b>	Composite
<b>PROTECTION</b>	Soft protection in APT
<b>UPPER</b>	Textile
<b>OUTSOLE</b>	Rubber with M48R midsole
<b>INSOLE</b>	Monitor SS2.0
<b>WATERPROOF</b>	No
<b>SUITABLE FOR</b>	Warehouse and industry
<b>LACING</b>	BOA® Fit System



## MONITOR PENTAGON

EN ISO 20345:2011 S3 SRC ESD

Art: **10055301**    Sizes: **36-48**    Color: **Black**

<b>FIT</b>	Wide
<b>TOECAP</b>	Composite
<b>PROTECTION</b>	Soft protection in APT
<b>UPPER</b>	Hypertex
<b>OUTSOLE</b>	Rubber with M48R rebound midsole
<b>INSOLE</b>	Monitor SS2.0
<b>WATERPROOF</b>	No
<b>SUITABLE FOR</b>	Industry, construction and warehouse
<b>LACING</b>	BOA® Fit System



## MONITOR REBEL

EN ISO 20345:2011 S3 SRC ESD

Art: **10055501**    Sizes: **36-48**    Color: **Black**

<b>FIT</b>	Wide
<b>TOECAP</b>	Composite
<b>PROTECTION</b>	Soft protection in APT
<b>UPPER</b>	Textile and TPU
<b>OUTSOLE</b>	Rubber with M48R midsole
<b>INSOLE</b>	Monitor SS2.0
<b>WATERPROOF</b>	No
<b>SUITABLE FOR</b>	Industry, construction and warehouse



## MONITOR COMBAT

EN ISO 20345:2011 S3 SRC ESD

Art: **10055401**    Sizes: **36-48**    Color: **Black**

<b>FIT</b>	Wide
<b>TOECAP</b>	Composite
<b>PROTECTION</b>	Soft protection in APT
<b>UPPER</b>	Textile and TPU
<b>OUTSOLE</b>	Rubber with M48R midsole
<b>INSOLE</b>	Monitor SS2.0
<b>WATERPROOF</b>	No
<b>SUITABLE FOR</b>	Industry, construction and warehouse
<b>LACING</b>	BOA® Fit System



# M-REBOUND



NEW

## MONITOR ICONIC

EN ISO 20345:2011 S1P SRC ESD

Art: **10056001** Sizes: **36-48** Color: **Black**

<b>FIT</b>	Wide
<b>TOECAP</b>	Carbon
<b>PROTECTION</b>	Pantzar APT
<b>UPPER</b>	Dyneema*
<b>OUTSOLE</b>	M48R rebound
<b>INSOLE</b>	Monitor SS2.0
<b>WATERPROOF</b>	No
<b>SUITABLE FOR</b>	Industry, construction and warehouse
<b>LACING</b>	BOA® L12 Fit System



NEW

## MONITOR SNIPER

EN ISO 20345:2011 S1P SRC ESD

Art: **10055201** Sizes: **36-48** Color: **Black**

<b>FIT</b>	Wide
<b>TOECAP</b>	Composite
<b>PROTECTION</b>	Soft protection in Pantzar APT
<b>UPPER</b>	Microfiber
<b>OUTSOLE</b>	Rubber with M48R midsole
<b>INSOLE</b>	Monitor SS2.0
<b>WATERPROOF</b>	No
<b>SUITABLE FOR</b>	Warehouse and industry
<b>LACING</b>	BOA® Fit System. Pantzar APT.



NEW

## MONITOR MINT

EN ISO 20345:2011 S1P HRO SRC ESD

Art: **10058501** Sizes: **33-42** Color: **Black**

<b>FIT</b>	Q-lady
<b>TOECAP</b>	Aluminum
<b>PROTECTION</b>	Pantzar APT soft penetration protection
<b>UPPER</b>	Microfiber and textile
<b>OUTSOLE</b>	M-rebound MRR with rubber outsole
<b>INSOLE</b>	Monitor SS2.0
<b>WATERPROOF</b>	No
<b>SUITABLE FOR</b>	Warehouse and industry
<b>LACING</b>	BOA® Fit System



# MOMENTUM



## MONITOR SPEED

EN ISO 20345:2011 S3 SRC ESD

Art: 10071001    Sizes: 39-47    Color: Black

<b>FIT</b>	Wide
<b>TOECAP</b>	Composite
<b>PROTECTION</b>	Soft protection in APT
<b>UPPER</b>	Leather and mesh
<b>OUTSOLE</b>	Dual-density PU with rugged tread pattern for good grip
<b>INSOLE</b>	Fit-tech for maximum comfort
<b>WATERPROOF</b>	No
<b>SUITABLE FOR</b>	Industry, transport, construction and warehouse
<b>LACING</b>	BOA® Fit System



## MONITOR VECTOR

EN ISO 20345:2011 S1P SRC ESD

Art: 10071101    Sizes: 39-46    Color: Black

<b>FIT</b>	Wide
<b>TOECAP</b>	Composite
<b>PROTECTION</b>	Soft protection in APT
<b>UPPER</b>	Microfiber and mesh
<b>OUTSOLE</b>	Dual-density PU with rugged tread pattern for good grip
<b>INSOLE</b>	Fit-tech for maximum comfort
<b>WATERPROOF</b>	No
<b>SUITABLE FOR</b>	Industry, construction and warehouse
<b>LACING</b>	BOA® Fit System



## MONITOR AERO

EN ISO 20345:2011 S1P SRC ESD

Art: 10071701    Sizes: 40-48    Color: Black

<b>FIT</b>	Wide
<b>TOECAP</b>	Composite
<b>PROTECTION</b>	Soft protection in APT
<b>UPPER</b>	Leather and mesh
<b>OUTSOLE</b>	Dual-density PU with rugged tread pattern for good grip
<b>INSOLE</b>	Fit-tech for maximum comfort
<b>WATERPROOF</b>	No
<b>SUITABLE FOR</b>	Industry, construction and warehouse
<b>LACING</b>	BOA® Fit System



# MOMENTUM



## MONITOR MOTION OUTDRY®

EN ISO 20345:2011 S3 WR SRC ESD

Art: 10071501

Sizes: 39-48

Color: Black

<b>FIT</b>	Wide
<b>TOECAP</b>	Composite
<b>PROTECTION</b>	Soft protection in APT
<b>UPPER</b>	Leather
<b>OUTSOLE</b>	Dual-density PU with rugged tread pattern for good grip
<b>INSOLE</b>	Fit-tech for maximum comfort
<b>WATERPROOF</b>	OutDry membrane
<b>SUITABLE FOR</b>	Industry, construction and warehouse



## MONITOR KINETIC

EN ISO 20345:2011 S1P SRC ESD

Art: 10071301

Sizes: 40-47

Color: Black

<b>FIT</b>	Wide
<b>TOECAP</b>	Composite
<b>PROTECTION</b>	Soft protection in APT
<b>UPPER</b>	Leather
<b>OUTSOLE</b>	Dual-density PU with rugged tread pattern for good grip
<b>INSOLE</b>	Fit-tech for maximum comfort
<b>WATERPROOF</b>	No
<b>SUITABLE FOR</b>	Industry, transport, construction and warehouse



# MOMENTUM

# MONITOR

## GRAND PRIX



These styles have a sportier design without sacrificing either comfort or safety. Toecap, penetration protection, shock absorption, breathability and extra stability – all part of a product formula that has rapidly made the GRAND PRIX series a real winner.



BOUNCE

V-POWER

DYNAMIC

FEATHER LADY

SIGMA

ALPHA



# GRAND PRIX



# BOUNCE



## MONITOR VENTURE

EN ISO 20345:2011 S1P SRC ESD

Art: 10072801    Sizes: 35-47    Color: Black

<b>FIT</b>	Regular
<b>TOECAP</b>	Composite
<b>PROTECTION</b>	Soft protection in APT
<b>UPPER</b>	Mo-knit textile
<b>OUTSOLE</b>	E50 non-slip rubber sole with EVA midsole
<b>INSOLE</b>	Monitor SS2.0
<b>WATERPROOF</b>	No
<b>SUITABLE FOR</b>	Warehouse and industry



## MONITOR MANIA

EN ISO 20345:2011 S3 SRC ESD

Art: 10072901    Sizes: 35-47    Color: Black

<b>FIT</b>	Regular
<b>TOECAP</b>	Composite
<b>PROTECTION</b>	Soft protection in APT
<b>UPPER</b>	Canvas textile and TPU
<b>OUTSOLE</b>	E50 non-slip rubber sole with EVA midsole
<b>INSOLE</b>	Monitor SS2.0
<b>WATERPROOF</b>	No
<b>SUITABLE FOR</b>	Warehouse and industry

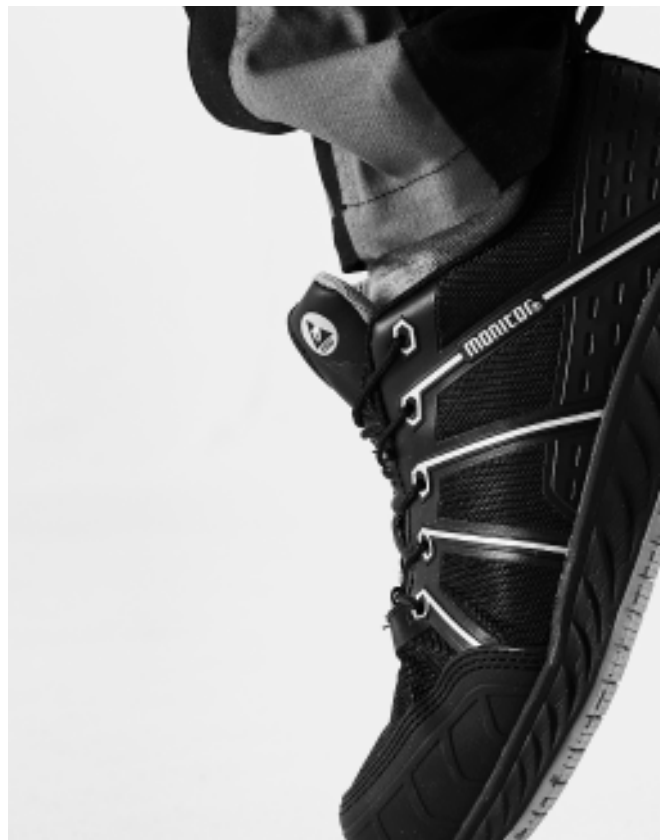


## MONITOR GUARD

EN ISO 20345:2011 S3 SRC ESD

Art: 10072701    Sizes: 39-47    Color: Black

<b>FIT</b>	Regular
<b>TOECAP</b>	Composite
<b>PROTECTION</b>	Soft protection in APT
<b>UPPER</b>	Canvas textile and TPU
<b>OUTSOLE</b>	E50 non-slip rubber sole with EVA midsole
<b>INSOLE</b>	Monitor SS2.0
<b>WATERPROOF</b>	No
<b>SUITABLE FOR</b>	Warehouse and industry





# V-POWER



## MONITOR SHARK

EN ISO 20345:2011 S3 SRC

Art: 10052001    Sizes: 39-47    Color: Black

<b>FIT</b>	Regular
<b>TOECAP</b>	Aluminum
<b>PROTECTION</b>	Soft protection in APT
<b>UPPER</b>	Textile and TPU
<b>OUTSOLE</b>	Vibram rubber sole and EVA midsole
<b>INSOLE</b>	Monitor SS2.0
<b>WATERPROOF</b>	No
<b>SUITABLE FOR</b>	Industry, construction and warehouse
<b>LACING</b>	BOA® Fit System



## MONITOR EAGLE

EN ISO 20345:2011 S3 SRC

Art: 10052101    Sizes: 39-47    Color: Black

<b>FIT</b>	Regular
<b>TOECAP</b>	Aluminum
<b>PROTECTION</b>	Soft protection in APT
<b>UPPER</b>	Textile and TPU
<b>OUTSOLE</b>	Vibram rubber sole and EVA midsole
<b>INSOLE</b>	Monitor SS2.0
<b>WATERPROOF</b>	No
<b>SUITABLE FOR</b>	Industry, construction and warehouse



**GRAND PRIX**

# DYNAMIC



## MONITOR MICRO

EN ISO 20345:2011 S3 SRC

Art: 10063001    Sizes: 35-47    Color: Black

<b>FIT</b>	Regular
<b>TOECAP</b>	Composite
<b>PROTECTION</b>	Soft protection in APT
<b>UPPER</b>	Leather
<b>OUTSOLE</b>	Dual-density PU
<b>INSOLE</b>	Monitor SS2.0
<b>WATERPROOF</b>	No
<b>SUITABLE FOR</b>	Industry, transport and warehouse work



## MONITOR HYBRID

EN ISO 20345:2011 S3 SRC

Art: 10063101    Sizes: 35-47    Color: Black

<b>FIT</b>	Regular
<b>TOECAP</b>	Composite
<b>PROTECTION</b>	Soft protection in APT
<b>UPPER</b>	Leather
<b>OUTSOLE</b>	Dual-density PU
<b>INSOLE</b>	Monitor SS2.0
<b>WATERPROOF</b>	No
<b>SUITABLE FOR</b>	Industry, transport and warehouse work



## MONITOR INFERNO

EN ISO 20345:2011 S1P SRC

Art: 10063201    Sizes: 35-47    Color: Black

<b>FIT</b>	Regular
<b>TOECAP</b>	Composite
<b>PROTECTION</b>	Soft protection in APT
<b>UPPER</b>	Textile and reflective Camelo
<b>OUTSOLE</b>	Dual-density PU
<b>INSOLE</b>	Monitor SS2.0
<b>WATERPROOF</b>	No
<b>SUITABLE FOR</b>	Warehouse and industry



## MONITOR DRAGON

EN ISO 20345:2011 S1P SRC ESD

Art: 10063301    Sizes: 35-47    Color: Black

<b>FIT</b>	Regular
<b>TOECAP</b>	Composite
<b>PROTECTION</b>	Soft protection in APT
<b>UPPER</b>	Mo-knit textile
<b>OUTSOLE</b>	Dual-density PU
<b>INSOLE</b>	Monitor SS2.0
<b>WATERPROOF</b>	No
<b>SUITABLE FOR</b>	Industry, transport and warehouse
<b>LACING</b>	BOA® Fit System



# DYNAMIC

NEW



## MONITOR RADAR

EN ISO 20345:2011 SIP SRC ESD

Art: 10063401

Sizes: 35-47

Color: Black

<b>FIT</b>	Regular
<b>TOECAP</b>	Composite
<b>PROTECTION</b>	Soft protection in APT
<b>UPPER</b>	Leather
<b>OUTSOLE</b>	Dual-density PU
<b>INSOLE</b>	Monitor SS2.0
<b>WATERPROOF</b>	No
<b>SUITABLE FOR</b>	Industry, transport and warehouse work



# GRAND PRIX

# FEATHER LADY



## MONITOR NAVAJO

EN ISO 20345:2011 S1P HRO SRC ESD

Art: 10078401    Sizes: 33-42    Color: Black

<b>FIT</b>	Q-lady
<b>TOECAP</b>	Aluminum
<b>PROTECTION</b>	Soft protection in APT
<b>UPPER</b>	Seamless microfiber
<b>OUTSOLE</b>	Rubber with EVA midsole
<b>INSOLE</b>	SSCC memory foam
<b>WATERPROOF</b>	No
<b>SUITABLE FOR</b>	Warehouse and industry



## MONITOR SPIRIT

EN ISO 20345:2011 S1P HRO SRC ESD

Art: 10078301    Sizes: 33-42    Color: Black

<b>FIT</b>	Q-lady
<b>TOECAP</b>	Aluminum
<b>PROTECTION</b>	Soft protection in APT
<b>UPPER</b>	Seamless microfiber
<b>OUTSOLE</b>	Rubber with EVA midsole
<b>INSOLE</b>	Monitor SS2.0
<b>WATERPROOF</b>	No
<b>SUITABLE FOR</b>	Warehouse and industry
<b>LACING</b>	BOA® Fit System



## MONITOR FOX

EN ISO 20345:2011 S1P SRC

Art: 10078208    Sizes: 33-42    Color: Gray / Black

<b>FIT</b>	Q-lady
<b>TOECAP</b>	Aluminum
<b>PROTECTION</b>	Soft protection in APT
<b>UPPER</b>	Seamless microfiber
<b>OUTSOLE</b>	Rubber with EVA midsole
<b>INSOLE</b>	Monitor SS2.0
<b>WATERPROOF</b>	No
<b>SUITABLE FOR</b>	Warehouse and industry



## MONITOR GOLD

EN ISO 20345:2011 S3 SRC ESD

Art: 10078501    Sizes: 33-42    Color: Black

<b>FIT</b>	Q-lady
<b>TOECAP</b>	Aluminum
<b>PROTECTION</b>	Soft protection in APT
<b>UPPER</b>	Seamless microfiber
<b>OUTSOLE</b>	Rubber with EVA midsole
<b>INSOLE</b>	Monitor SS2.0
<b>WATERPROOF</b>	No
<b>SUITABLE FOR</b>	Warehouse and industry
<b>LACING</b>	BOA® Fit System



**FEATHER LADY**



LADY

**GRAND PRIX**

# SIGMA



## MONITOR MIG

EN ISO 20345:2011 S3 SRC HRO ESD

Art: 10073601    Sizes: 36-47    Color: Black

<b>FIT</b>	Wide
<b>TOECAP</b>	Aluminum
<b>PROTECTION</b>	Soft protection in APT
<b>UPPER</b>	Ripstop textile and TPU
<b>OUTSOLE</b>	Rubber with EVA midsole
<b>INSOLE</b>	Monitor SS2.0
<b>WATERPROOF</b>	No
<b>SUITABLE FOR</b>	Industry, transport, construction and warehouse
<b>LACING</b>	BOA® Fit System



## MONITOR KRYPTO

EN ISO 20345:2011 S3 HRO WR ESD SRC

Art: 10073201    Sizes: 36-47    Color: Black

<b>FIT</b>	Wide
<b>TOECAP</b>	Aluminum
<b>PROTECTION</b>	Soft protection in APT
<b>UPPER</b>	Microfiber, mesh and TPU
<b>OUTSOLE</b>	Rubber with EVA midsole
<b>INSOLE</b>	Monitor SS2.0
<b>WATERPROOF</b>	Monitex membrane
<b>SUITABLE FOR</b>	Warehouse and industry
<b>LACING</b>	BOA® Fit System



## MONITOR CHARGED

EN ISO 20345:2011 S3 WR SRC HRO

Art: 10073501    Sizes: 36-47    Color: Black

<b>FIT</b>	Wide
<b>TOECAP</b>	Aluminum
<b>PROTECTION</b>	Soft protection in APT
<b>UPPER</b>	Microfiber
<b>OUTSOLE</b>	Rubber with EVA midsole
<b>INSOLE</b>	Monitor SS2.0
<b>WATERPROOF</b>	Monitex membrane
<b>SUITABLE FOR</b>	Warehouse, industry and transport
<b>LACING</b>	BOA® Fit System



## MONITOR CONCORDE

EN ISO 20345:2011 S1P HRO SRC

Art: 10072501    Sizes: 36-47    Color: White

<b>FIT</b>	Wide
<b>TOECAP</b>	Aluminum
<b>PROTECTION</b>	Soft protection in APT
<b>UPPER</b>	Microfiber and mesh
<b>OUTSOLE</b>	Rubber with EVA midsole
<b>INSOLE</b>	Monitor SS2.0
<b>WATERPROOF</b>	No
<b>SUITABLE FOR</b>	Warehouse, industry and painting
<b>LACING</b>	BOA® Fit System



**SIGMA**



**GRAND PRIX**

# ALPHA



## MONITOR ROBOTIC

EN ISO 20345:2011 S1P HRD SRC

Art: 10072401    Sizes: 36-47    Color: Black

<b>FIT</b>	Wide
<b>TOECAP</b>	Aluminum
<b>PROTECTION</b>	Soft protection in APT
<b>UPPER</b>	Microfiber and mesh
<b>OUTSOLE</b>	Rubber with EVA midsole
<b>INSOLE</b>	Monitor SS2.0
<b>WATERPROOF</b>	No
<b>SUITABLE FOR</b>	Warehouse and industry
<b>LACING</b>	BOA® Fit System



## MONITOR REVENGE

EN ISO 20345:2011 S1P HRD SRC

Art: 10072201    Sizes: 36-47    Color: Black

<b>FIT</b>	Wide
<b>TOECAP</b>	Aluminum
<b>PROTECTION</b>	Soft protection in APT
<b>UPPER</b>	Microfiber and mesh
<b>OUTSOLE</b>	Rubber with EVA midsole
<b>INSOLE</b>	Monitor SS2.0
<b>WATERPROOF</b>	No
<b>SUITABLE FOR</b>	Warehouse and industry



## MONITOR DEFENDER

EN ISO 20345:2011 S3 HRD WR SRC

Art: 10072301    Sizes: 37-46    Color: Black

<b>FIT</b>	Wide
<b>TOECAP</b>	Aluminum
<b>PROTECTION</b>	Soft protection in APT
<b>UPPER</b>	Microfiber and TPU
<b>OUTSOLE</b>	Rubber with EVA midsole
<b>INSOLE</b>	Monitor SS2.0
<b>WATERPROOF</b>	Yes, with Monitex membrane
<b>SUITABLE FOR</b>	Warehouse and industry
<b>LACING</b>	BOA® Fit System





**ALPHA**



**GRAND PRIX**

# MONITOR

## HEAVY DUTY



The toughest collection in our range. This is about durable shoes and boots that can withstand most things, both indoors and out. The shoes are available as both windproof and waterproof and have breathable properties that keep your feet dry at all times.





# HEAVY DUTY



# HEAVY DUTY

NEW



## MONITOR MADISON

EN ISO 20345:2011 S3 SRC ESD

Art: 10060101    Sizes: 36-47    Color: Black

<b>FIT</b>	Wide
<b>TOECAP</b>	Steel
<b>PROTECTION</b>	Steel
<b>UPPER</b>	Microfiber
<b>OUTSOLE</b>	Dual-density PU
<b>INSOLE</b>	Monitor SS2.0
<b>WATERPROOF</b>	No
<b>SUITABLE FOR</b>	Industry, construction and warehouse

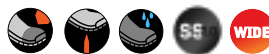


## MONITOR DENVER

EN ISO 20345:2011 S3 SRC

Art: 10060301    Sizes: 36-47    Color: Black

<b>FIT</b>	Wide
<b>TOECAP</b>	Steel
<b>PROTECTION</b>	Steel
<b>UPPER</b>	PU-coated leather
<b>OUTSOLE</b>	Dual-density PU
<b>INSOLE</b>	Monitor SS2.0
<b>WATERPROOF</b>	No
<b>SUITABLE FOR</b>	Building, construction and heavy-duty work



## MONITOR JACKSON

EN ISO 20345:2011 S3 SRC

Art: 10060801    Sizes: 36-47    Color: Black

<b>FIT</b>	Wide
<b>TOECAP</b>	Composite
<b>PROTECTION</b>	Soft protection in APT
<b>UPPER</b>	PU-coated leather
<b>OUTSOLE</b>	Dual-density PU
<b>INSOLE</b>	Monitor SS2
<b>WATERPROOF</b>	No
<b>SUITABLE FOR</b>	Building, construction and heavy-duty work

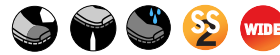


## MONITOR DALLAS

EN ISO 20345:2011 S3 SRC

Art: 10060901    Sizes: 36-47    Color: Black

<b>FIT</b>	Wide
<b>TOECAP</b>	Composite
<b>PROTECTION</b>	Soft protection in APT
<b>UPPER</b>	PU-coated leather
<b>OUTSOLE</b>	Dual-density PU
<b>INSOLE</b>	Monitor SS2
<b>WATERPROOF</b>	No
<b>SUITABLE FOR</b>	Building, construction and heavy-duty work



# HEAVY DUTY



## MONITOR ASSAULT

EN ISO 20345:2011 S3 WR SRC

Art: 10080601    Sizes: 36-48    Color: Black

<b>FIT</b>	Wide
<b>TOECAP</b>	Composite
<b>PROTECTION</b>	Soft protection in APT
<b>UPPER</b>	Leather
<b>OUTSOLE</b>	Vibram rubber sole
<b>INSOLE</b>	Monitor X4
<b>WATERPROOF</b>	Yes, with Monitex membrane
<b>SUITABLE FOR</b>	Building, construction and heavy-duty work
<b>LACING</b>	BOA® Fit System



## MONITOR WEAPON

EN ISO 20345:2011 S3 WR SRC

Art: 10080701    Sizes: 36-48    Color: Black

<b>FIT</b>	Wide
<b>TOECAP</b>	Composite
<b>PROTECTION</b>	Soft protection in APT
<b>UPPER</b>	Leather
<b>OUTSOLE</b>	Vibram rubber sole
<b>INSOLE</b>	Monitor X4
<b>WATERPROOF</b>	Yes, with Monitex membrane
<b>SUITABLE FOR</b>	Building, construction and heavy-duty work
<b>LACING</b>	BOA® Fit System

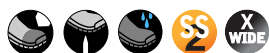


## MONITOR SHADOW

EN ISO 20345:2011 S3 HRD SRC

Art: 10079201    Sizes: 36-47    Color: Black

<b>FIT</b>	Extra wide
<b>TOECAP</b>	Composite
<b>PROTECTION</b>	Soft protection in APT
<b>UPPER</b>	Leather
<b>OUTSOLE</b>	Rubber with PU midsole
<b>INSOLE</b>	Monitor SS2
<b>WATERPROOF</b>	No
<b>SUITABLE FOR</b>	Building, construction and heavy-duty work

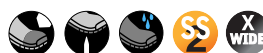


## MONITOR COMMAND

EN ISO 20345:2011 S3 HRD SRC

Art: 10079301    Sizes: 36-47    Color: Black

<b>FIT</b>	Extra wide
<b>TOECAP</b>	Composite
<b>PROTECTION</b>	Soft protection in APT
<b>UPPER</b>	Leather
<b>OUTSOLE</b>	Rubber with PU midsole
<b>INSOLE</b>	Monitor SS2
<b>WATERPROOF</b>	No
<b>SUITABLE FOR</b>	Building, construction and heavy-duty work



# HEAVY DUTY



## MONITOR STRIKER

EN ISO 20345:2011 S3 SRC ESD

Art: 10061101    Sizes: 36-47    Color: Black

<b>FIT</b>	Wide
<b>TOECAP</b>	Composite
<b>PROTECTION</b>	Soft protection in APT
<b>UPPER</b>	Leather and mesh
<b>OUTSOLE</b>	Dual-density PU
<b>INSOLE</b>	Monitor SS2
<b>WATERPROOF</b>	No
<b>SUITABLE FOR</b>	Industry, transport, construction and warehouse



## MONITOR BLADE

EN ISO 20345:2011 S3 SRC ESD

Art: 10061201    Sizes: 36-47    Color: Black

<b>FIT</b>	Wide
<b>TOECAP</b>	Composite
<b>PROTECTION</b>	Soft protection in APT
<b>UPPER</b>	Leather and mesh
<b>OUTSOLE</b>	Dual-density PU
<b>INSOLE</b>	Monitor SS2
<b>WATERPROOF</b>	No
<b>SUITABLE FOR</b>	Industry, transport, construction and warehouse



## MONITOR RÄTTVIK

EN ISO 200345:2011 S5 SRC

Art: 10030401    Sizes: 36-48    Color: Black

<b>FIT</b>	Wide
<b>TOECAP</b>	Steel
<b>PROTECTION</b>	Soft protection in APT
<b>UPPER</b>	PVC
<b>OUTSOLE</b>	Nitrile rubber
<b>WATERPROOF</b>	Yes
<b>SUITABLE FOR</b>	Building, construction and heavy-duty work



## MONITOR HURRICANE

EN ISO 20345:2011 S3 HRO WR SRC

Art: 10077401    Sizes: 36-48    Color: Black

<b>FIT</b>	Wide
<b>TOECAP</b>	Composite
<b>PROTECTION</b>	Soft protection in APT
<b>UPPER</b>	Leather
<b>OUTSOLE</b>	Cold-resistant nitrile rubber with PU midsole
<b>INSOLE</b>	Monitor SS2
<b>WATERPROOF</b>	Monitex membrane
<b>SUITABLE FOR</b>	Building, construction and heavy-duty work
<b>LACING</b>	BOA® Fit System



# HEAVY DUTY



## MONITOR HUDSON BAY

EN ISO 20345:2011 S3 CI SRC

Art: 10061301    Sizes: 36-47    Color: Black

<b>FIT</b>	Wide
<b>TOECAP</b>	Composite
<b>PROTECTION</b>	Soft protection in APT
<b>UPPER</b>	Leather and canvas textile
<b>OUTSOLE</b>	PU/TPU
<b>INSOLE</b>	Monitor SS2.0
<b>WATERPROOF</b>	No
<b>SUITABLE FOR</b>	Building, construction and heavy-duty work



## MONITOR ICEBREAKER ARCTIC

EN ISO 20345:2011 S3 HRO CI HI SRC

Art: 10079701    Sizes: 36-48    Color: Black

<b>FIT</b>	Regular
<b>TOECAP</b>	Composite
<b>PROTECTION</b>	Soft protection in APT
<b>UPPER</b>	Leather and Cordura
<b>OUTSOLE</b>	Cold-resistant nitrile rubber with PU midsole
<b>INSOLE</b>	Felt insole
<b>WATERPROOF</b>	No
<b>SUITABLE FOR</b>	Building, construction and heavy-duty work



## MONITOR POLAR STEALTH

EN ISO 20345:2011 S3 HRO CI HI SRC

Art: 10079601    Sizes: 36-48    Color: Black

<b>FIT</b>	Wide
<b>TOECAP</b>	Composite
<b>PROTECTION</b>	Soft protection in APT
<b>UPPER</b>	Leather and Cordura
<b>OUTSOLE</b>	Cold-resistant nitrile rubber with PU midsole
<b>INSOLE</b>	Lambswool insole
<b>WATERPROOF</b>	No
<b>SUITABLE FOR</b>	Building, construction and heavy-duty work



# MONITOR

## SPORTWORK

EN ISO 20347:2012

The ideal collection for both work and leisure. These styles are certified in accordance with EN ISO 20347:2012 and designed without a toecap or penetration protection. The design and suppleness are inspired by sports shoes, and the material has been carefully chosen to ensure they deliver the necessary stability and durability – both at work and in your leisure time.







# SPORTWORK



## MONITOR M EXPRESS

EN ISO 200347:2012 02 WR SRC ESD

Art: 10040601    Sizes: 35-47    Color: Black

<b>FIT</b>	Wide
<b>TOECAP</b>	No
<b>PROTECTION</b>	No
<b>UPPER</b>	PU-coated leather
<b>OUTSOLE</b>	Rubber with EVA midsole
<b>INSOLE</b>	Monitor SS2.0
<b>WATERPROOF</b>	No
<b>SUITABLE FOR</b>	Healthcare and service industries, as well as recreation



## MONITOR M EXPRESS

EN ISO 200347:2012 02 WR SRC ESD

Art: 10040602    Sizes: 35-47    Color: White

<b>FIT</b>	Wide
<b>TOECAP</b>	No
<b>PROTECTION</b>	No
<b>UPPER</b>	PU-coated leather
<b>OUTSOLE</b>	Rubber with EVA midsole
<b>INSOLE</b>	Monitor SS2.0
<b>WATERPROOF</b>	No
<b>SUITABLE FOR</b>	Healthcare and service industries, as well as recreation



## MONITOR SIERRA

EN ISO 20347:2012 01 HRO SRC ESD

Art: 10040301    Sizes: 33-42    Color: Black

<b>FIT</b>	Q-lady
<b>TOECAP</b>	No
<b>PROTECTION</b>	No
<b>UPPER</b>	Seamless microfiber and mesh
<b>OUTSOLE</b>	Rubber with EVA midsole
<b>INSOLE</b>	Monitor SS2.0
<b>WATERPROOF</b>	No
<b>SUITABLE FOR</b>	Work and leisure



## MONITOR GREY

EN ISO 20347:2012 01 HRO SRC ESD

Art: 10040708    Sizes: 33-42    Color: Gray

<b>FIT</b>	Q-lady
<b>TOECAP</b>	No
<b>PROTECTION</b>	No
<b>UPPER</b>	Seamless microfiber and mesh
<b>OUTSOLE</b>	Rubber with EVA midsole
<b>INSOLE</b>	Monitor SS2.0
<b>WATERPROOF</b>	No
<b>SUITABLE FOR</b>	Work and leisure
<b>LACING</b>	BDA* Fit System



# SPORTWORK



## MONITOR MASTER

EN ISO 200347:2012 01 SRC

Art: 10041201    Sizes: 36-47    Color: Black

<b>FIT</b>	Wide
<b>TOECAP</b>	No
<b>PROTECTION</b>	No
<b>UPPER</b>	Carbon-reinforced fabric
<b>OUTSOLE</b>	Rubber with PU midsole
<b>INSOLE</b>	Monitor X4
<b>WATERPROOF</b>	No
<b>SUITABLE FOR</b>	Work and leisure
<b>LACING</b>	BOA® Fit System



## MONITOR CLIP

EN ISO 20347:2012 04 FO SRC

Art: 30055104    Sizes: 36-48    Color: Green

<b>FIT</b>	Wide
<b>TOECAP</b>	No
<b>PROTECTION</b>	No
<b>UPPER</b>	PVC
<b>OUTSOLE</b>	Nitrile rubber
<b>WATERPROOF</b>	Yes
<b>SUITABLE FOR</b>	Work and leisure



## MONITOR EXPLORE

EN ISO 200347:2012 02 WR SRC

Art: 10041101    Sizes: 36-47    Color: Black

<b>FIT</b>	Wide
<b>TOECAP</b>	No
<b>PROTECTION</b>	No
<b>UPPER</b>	Microfiber
<b>OUTSOLE</b>	Rubber with PU midsole
<b>INSOLE</b>	Monitor X4
<b>WATERPROOF</b>	Monitex membrane
<b>SUITABLE FOR</b>	Work and leisure



## MONITOR MARATHON

EN ISO 200347:2012 02 WR SRC

Art: 10041001    Sizes: 36-47    Color: Black

<b>FIT</b>	Wide
<b>TOECAP</b>	No
<b>PROTECTION</b>	No
<b>UPPER</b>	Microfiber
<b>OUTSOLE</b>	Rubber with PU midsole
<b>INSOLE</b>	Monitor X4
<b>WATERPROOF</b>	Monitex membrane
<b>SUITABLE FOR</b>	Work and leisure
<b>LACING</b>	BOA® Fit System



# MONITOR

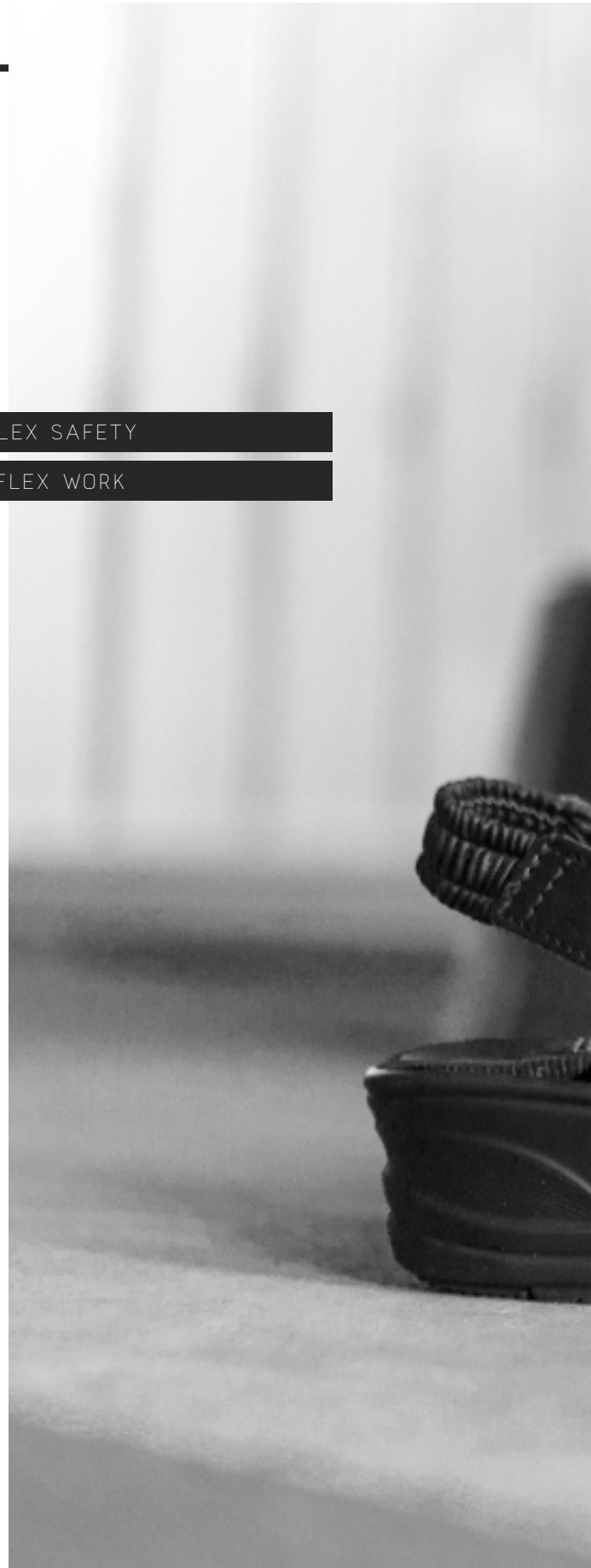
## FLEX



FLEX SAFETY

FLEX WORK

Monitor has a range of clogs that are comfortable to wear and reinforced where needed. The ergonomically designed insole with metatarsal arch support and toe grip makes the clog extremely comfortable to wear. The cushioned outsole is non-slip and certified as SRC. Available with or without protection – whatever your requirement.



FLEX



**FLEX**



**MONITOR BIRKA**

EN 20347:2012 OB SRC FO A E

Art: **50078101** Sizes: **35-47** Color: **Black**

<b>FIT</b>	Wide
<b>TOECAP</b>	No
<b>PROTECTION</b>	No
<b>UPPER</b>	PU-coated leather and perforated inside
<b>OUTSOLE</b>	PU
<b>WATERPROOF</b>	No
<b>SUITABLE FOR</b>	Work and leisure



**MONITOR BIRKA**

EN 20347:2012 OB SRC FO A E

Art: **10078102** Sizes: **35-47** Color: **White**

<b>FIT</b>	Wide
<b>TOECAP</b>	No
<b>PROTECTION</b>	No
<b>UPPER</b>	PU-coated leather and perforated inside
<b>OUTSOLE</b>	PU
<b>WATERPROOF</b>	No
<b>SUITABLE FOR</b>	Work and leisure



**MONITOR BIRKA HEEL STRAP**

EN 20347:2012 OB SRC FO A E

Art: **50078121** Sizes: **35-47** Color: **Black**

<b>FIT</b>	Wide
<b>TOECAP</b>	No
<b>PROTECTION</b>	No
<b>UPPER</b>	PU-coated leather and perforated inside
<b>OUTSOLE</b>	PU
<b>WATERPROOF</b>	No
<b>SUITABLE FOR</b>	Work and leisure



**MONITOR BIRKA HEEL STRAP**

EN 20347:2012 OB SRC FO A E

Art: **50078122** Sizes: **35-47** Color: **White**

<b>FIT</b>	Wide
<b>TOECAP</b>	No
<b>PROTECTION</b>	No
<b>UPPER</b>	PU-coated leather and perforated inside
<b>OUTSOLE</b>	PU
<b>WATERPROOF</b>	No
<b>SUITABLE FOR</b>	Work and leisure



# FLEX SAFETY



## MONITOR POSEIDON

EN ISO 20345:2011 SB P SRC FO A E

Art: **40982501**    Sizes: **35-47**    Color: **Black**

<b>FIT</b>	Wide
<b>TOECAP</b>	Aluminum
<b>PROTECTION</b>	Soft protection in APT
<b>UPPER</b>	PU-coated leather and mesh
<b>OUTSOLE</b>	PU
<b>WATERPROOF</b>	No
<b>SUITABLE FOR</b>	Work and leisure



## MONITOR YMER

EN ISO 20345:2011 SB SRC FO A E

Art: **40982301**    Sizes: **35-47**    Color: **Black**

<b>FIT</b>	Wide
<b>TOECAP</b>	Steel
<b>PROTECTION</b>	No
<b>UPPER</b>	Leather
<b>OUTSOLE</b>	PU
<b>INSOLE</b>	Cambrelle
<b>WATERPROOF</b>	No
<b>SUITABLE FOR</b>	Work and leisure



# MONITOR

## 365



365 are lightweight and comfortable light work/sports/casual shoes with a wide range of applications, be it leisure, sports or work when safety footwear is not required.





365



365



NEW

**MONITOR VICTORY**

Art: 10046001    Sizes: 35-47    Color: Black

<b>FIT</b>	Regular
<b>TOECAP</b>	No
<b>PROTECTION</b>	No
<b>UPPER</b>	Leather
<b>OUTSOLE</b>	Approved slip resistance in accordance with SRC
<b>MIDSOLE</b>	TPU
<b>INSOLE</b>	Memory foam
<b>WATERPROOF</b>	No
<b>SUITABLE FOR</b>	Work, sports and leisure



NEW

**MONITOR GAME**

Art: 10046101    Sizes: 35-47    Color: Black

<b>FIT</b>	Regular
<b>TOECAP</b>	No
<b>PROTECTION</b>	No
<b>UPPER</b>	Mo-knit textile
<b>OUTSOLE</b>	Approved slip resistance in accordance with SRC
<b>MIDSOLE</b>	TPU
<b>INSOLE</b>	Memory foam
<b>WATERPROOF</b>	No
<b>SUITABLE FOR</b>	Work, sports and leisure



NEW

**MONITOR PERFORM**

Art: 10046204    Sizes: 35-47    Color: Green

<b>FIT</b>	Regular
<b>TOECAP</b>	No
<b>PROTECTION</b>	No
<b>UPPER</b>	Mo-knit textile
<b>OUTSOLE</b>	Approved slip resistance in accordance with SRC
<b>MIDSOLE</b>	TPU
<b>INSOLE</b>	Memory foam
<b>WATERPROOF</b>	No
<b>SUITABLE FOR</b>	Work, sports and leisure



# 365



## MONITOR MONIMOC

Art: 10045201    Sizes: 35-47    Color: Black

<b>FIT</b>	Regular
<b>TOECAP</b>	No
<b>PROTECTION</b>	No
<b>UPPER</b>	Textile
<b>OUTSOLE</b>	Rubber with EVA midsole
<b>INSOLE</b>	Memory foam
<b>WATERPROOF</b>	No
<b>SUITABLE FOR</b>	Work, sports and leisure



## MONITOR MONIFLEX ONE

Art: 10045101    Sizes: 35-47    Color: Black

<b>FIT</b>	Regular
<b>TOECAP</b>	No
<b>PROTECTION</b>	No
<b>UPPER</b>	Textile and neoprene
<b>OUTSOLE</b>	Rubber with EVA midsole
<b>INSOLE</b>	Memory foam
<b>WATERPROOF</b>	No
<b>SUITABLE FOR</b>	Work, sports and leisure



## MONITOR POOL

Art: 10045001    Sizes: 36-47    Color: Black

<b>FIT</b>	Regular
<b>TOECAP</b>	No
<b>PROTECTION</b>	No
<b>UPPER</b>	Eco-friendly polyurethane
<b>OUTSOLE</b>	EVA
<b>INSOLE</b>	No
<b>WATERPROOF</b>	No
<b>SUITABLE FOR</b>	Work, sports and leisure



# MONITOR GARMENTS

**Monitor Constructed Garments** is the essence of all functional attire, stripped down to just the clothes you truly need. Nothing more, nothing less.

A modern, stylish and considered collection in which all the garments match and accentuate each other's best qualities, and one that can handle everything from everyday challenges to long days at work.



CONSTRUCTED  
GARMENTS





# MONITOR GARMENTS

## MONITOR SWEAT ONE

Art: 900102BA | 900102BD | 900102BB Sizes: XS-XXXL

- 100% cotton for maximum comfort.
- Scoop neck.
- Breast pocket.
- Raw edge cut.
- Longer in the back.
- Printed care instructions. Wash only at 40 °C.
- No ribbed hem, for the best fit at all times.



## MONITOR MIDLAYER JACKET

Art: 900107BA | 900107BD Sizes: XS-XXXL

- Reverse side is a soft, comfortable microfleece.
- Technostretch on the outside.
- Micro stripe fabric.
- Hidden breast pocket.
- Printed care instructions on the sleeve.
- Concealed front zipper.
- 93% polyester, 7% elastane



# MONITOR GARMENTS

## MONITOR HOOD ONE

Art: **900103BC** Sizes: **XS-XXXL**

- Hood.
- Generous fit for maximum comfort and mobility.
- Durable scuba fabric.
- Thumb holes to keep you warm on colder days.
- Rubberized logo label.
- Full zipper.
- Blazing yellow zipper.
- Side pockets.
- Printed care instructions on the sleeve, so no itchy labels.
- Yoke seam in back.
- No ribbed hem, for the best fit at all times.
- 80% polyester, 12% viscose, 8% cotton



## MONITOR SWEAT TWO

Art: **900111BD | 900111BC** Sizes: **XS-XXXL**

- Made of cotton and polyester
- Printed logo on the chest
- Waterproof side pockets
- Low-cut neckline
- Detailed stitching for a unique design
- Meshed cuffs
- Contrasting yellow buttons
- Vents with logo strap
- 53% cotton, 47% polyester



# MONITOR GARMENTS

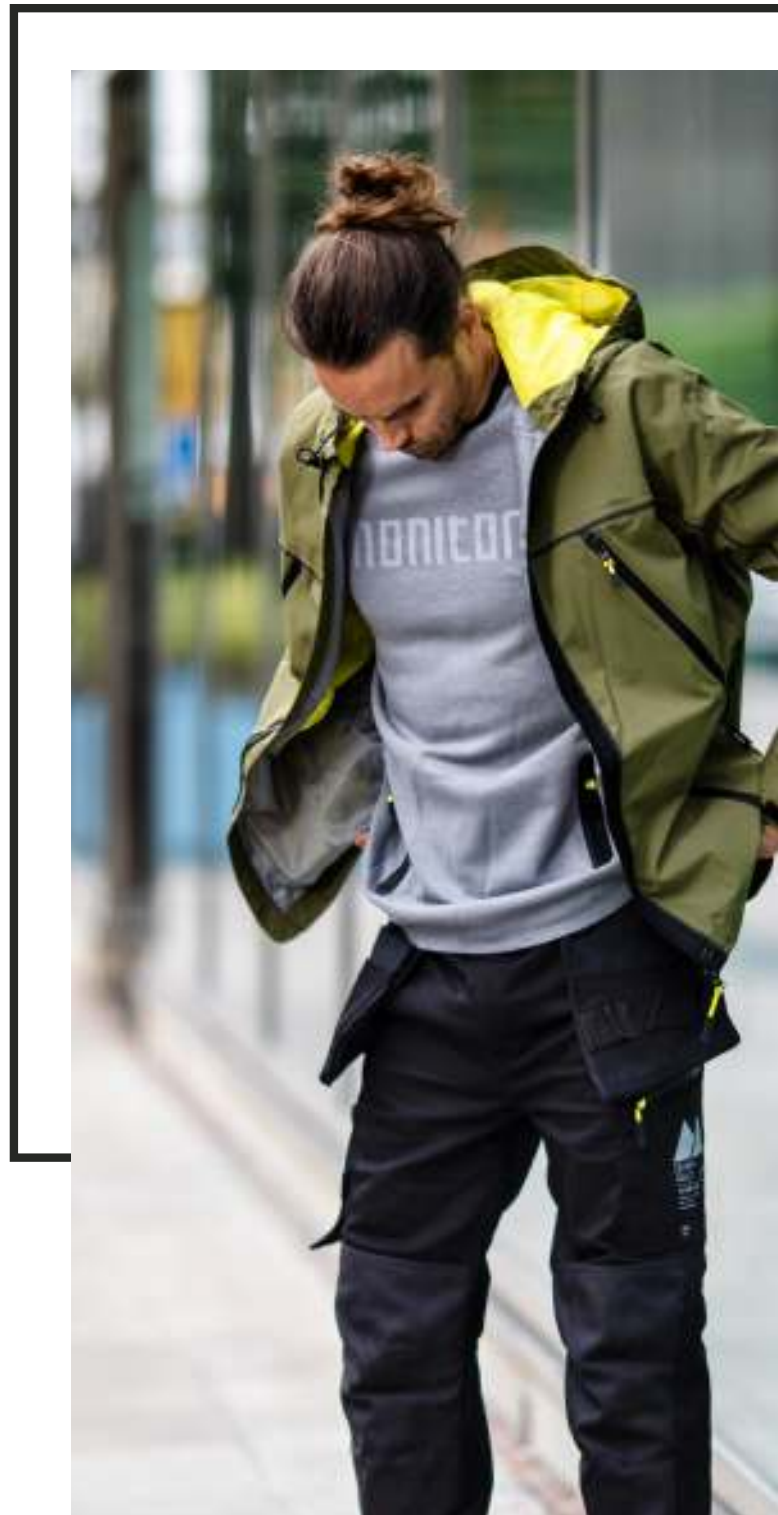


## MONITOR SHELL JACKET

Art: **900106BD** | **900106BE**

Sizes: **XS-XXXL**

- Unlined – wear it with a base layer and extra mid layer, adjusting as the weather conditions change.
- Side pockets.
- Waterproof rating of 10,000 mm.
- Built-in membrane for breathability that also keeps you dry.
- Breast pocket.
- Adjustable cuffs.
- Reflective accents, front and back.
- Inner lining of the hood in blazing yellow.
- Taped seams.
- Hood.
- Vibrant, color-treated fabric.
- 100% nylon.





**MONITOR GARMENTS**

---



# MONITOR GARMENTS



**STRETCH**



## MONITOR VERSATILE 4WS NYLON

Art: **900506BD** | **900506BA**      Sizes: **XS-XXXL**

- Internal knee pad pockets
- Adjustable ankles with reflectors
- Hanging pockets with internal reinforcement
- Knife holster and hammer loop
- Four-way stretch for maximum comfort
- 93% nylon, 7% elastane



## MONITOR WORKER 4WS NYLON

Art: **900507BA**      Sizes: **XS-XXXL**

- Four-way stretch for maximum comfort
- Adjustable ankles with reflectors
- Denim pockets
- Knife holster and hammer loop
- Leg pocket and folding rule pocket
- 93% nylon, 7% elastane



# MONITOR GARMENTS

STRETCH



**MONITOR WORKER 4WS NYLON**

Art: **900510BA** Sizes: **XS-XXXL**

- Four-way stretch for maximum comfort
- Knife holster and hammer loop
- Leg pocket and folding rule pocket
- 93% nylon, 7% elastane



**MONITOR VERSATILE 4WS NYLON**

Art: **900508BA** Sizes: **XS-XXXL**

- Hanging pockets with internal reinforcement
- Knife holster and hammer loop
- Four-way stretch for maximum comfort
- 93% nylon, 7% elastane



# MONITOR GARMENTS



## MONITOR BEANIE 10-PACK

Art: **900200BA** | **900200BD**      Sizes: **ONESIZE**

- Knitted hat
- Available in black or green
- 100% acrylic
- Sold in packs of 10

**STRETCH**



## MONITOR BELT 10-PACK

Art: **900201BA** | **900201BD**      Sizes: **ONESIZE**

- Knitted hat
- Available in black or green
- 100% acrylic
- Sold in packs of 10

# MONITOR GARMENTS



# MONITOR SOCKS



## MONITOR MOMENTUM

Art: **80000401**

Sizes: **37-48**

- Work and leisure socks
- 40% Tactel, 50% polyamide, 3% Bekinox, 7% Lycra
- ESD-approved
- Sold in packs of 2



## MONITOR FEATHER LADY

Art: **80000501**

Sizes: **34-42**

- Work and leisure socks
- 35% Coolmax, 30% wool, 27% polyamide, 3% Bekinox, 5% Lycra
- ESD-approved
- Sold in packs of 2



## MONITOR SIGMA

Art: **80000601**

Sizes: **37-48**

- Work and leisure socks
- 54% Coolmax, 16% wool, 20% polyamide, 6% silk, 4% Lycra
- Sold in packs of 2



## MONITOR COOLMAX

Art: **80000801**

Sizes: **37-48**

- Work and leisure socks
- 64% Coolmax, 32% polyamide, 4% Lycra
- Sold in packs of 2



## MONITOR SPORTWORK

Art: **80000701**

Sizes: **34-48**

- Work and leisure socks
- 50% wool, 45% polyamide, 5% Lycra
- Sold in packs of 2



## MONITOR STEALTH

Art: **80000901**

Sizes: **37-48**

- Work and hiking socks
- 60% wool, 30% polyamide, 6% silk, 4% Lycra
- Single-pair pack

# MONITOR SOCKS



**NEW**

## MONITOR MONISHE REBOUND

Art: **80023001**

Sizes: **33-42**

- This sock is designed for work, sports and leisure and is made from 33% DRYARN®, which is a very lightweight, extremely breathable, quick-drying and insulating material. It also contains 64% polyamide and 3% Lycra. MoniShe Rebound has been specially designed for women's feet. To ensure added comfort, this sock also has woven cushioning zones under the heel and toes, which serve as reinforcement.



**NEW**

## MONITOR M-REBOUND

Art: **80023101**

Sizes: **36-48**

- This sock is designed for work, sports and leisure and is made from 33% DRYARN®, which is a very lightweight, extremely breathable, quick-drying and insulating material. It also contains 64% polyamide and 3% Lycra. To ensure added comfort, this sock also has woven cushioning zones under the heel and toes, which serve as reinforcement.



# MONITOR ACCESSORIES

LOW



## MONITOR ARCH SUPPORT

Art: 800330AL Sizes: 35-48



MEDIUM



## MONITOR ARCH SUPPORT

Art: 800330AM Sizes: 35-48



HIGH



## MONITOR ARCH SUPPORT

Art: 800330AS Sizes: 35-48



## MONITOR SS2.0 CUSHION

Art: 80033201 Sizes: 33-48

- Dual-density polyurethane
- ESD class 1
- Arch support
- Heel cup for better support
- Suitable for all Monitor safety shoes and occupational footwear



## MONIFRESH - SKUNK BUSTER

Art: 800333 Sizes: ONESIZE

Deodorizing pouches that absorb moisture, eliminate odor and leave a fresh scent. Place them overnight in shoes, drawers, bags or sports equipment. The pouches may sometimes need to be left in place for longer to achieve full effect.

Scent lasts approx. 2-4 months. The pouches are designed to remove moisture and eliminate odor for up to 1 year. Refresh pouches after prolonged use by hanging them up in a well-ventilated space. Then shake gently until the pouch and its contents return to their original state.

## MONITOR SHOELACES

- |   |        |                                          |
|---|--------|------------------------------------------|
| 1 | 800320 | 80 cm round/black - 10-pack              |
| 2 | 800321 | 100 cm round/black - 10-pack             |
| 3 | 800322 | 120 cm round/black - 10-pack             |
| 4 | 800323 | 150 cm round/black - 5-pack              |
| 5 | 800324 | 120 cm 3x3 mm/black leather - 5-pack     |
| 6 | 800325 | 100 cm round/black. Flameproof - 10-pack |







# OTHER BRANDS

---







BIRKENSTOCK PROFESSIONAL

# SUPER GRIP-SOLE

# BIRKENSTOCK PROFESSIONAL



## BIRKENSTOCK ARIZONA SL



Art: 101822201

Sizes: 35-46

Color: Black



Art: 101822301

Sizes: 35-41

Color: Black

» Non-slip sandal. Perfect for hospitals & kitchens.



## BIRKENSTOCK ARIZONA SL

Art: 23015401

Sizes: 40-48

Color: Black

» Non-slip sandal. Perfect for hospitals & kitchens.



## BIRKENSTOCK ARIZONA SL



Art: 23016402

Sizes: 41-46

Color: White

» Non-slip sandal. Perfect for hospitals & kitchens.





BIRKENSTOCK PROFESSIONAL

# SUPER GRIP-SOLE

# BIRKENSTOCK PROFESSIONAL



## BIRKENSTOCK KAY SL



Art: 1016662    Sizes: 36-41    Color: Black

» Non-slip sandal. Perfect for hospitals & kitchens.  
» Folding heel strap



## BIRKENSTOCK BOSTON SL



Art: 06013402    Sizes: 41-46    Color: White



Art: 06013602    Sizes: 35-41    Color: White

» Non-slip sandal. Perfect for hospitals & kitchens.



## BIRKENSTOCK BOSTON SL



Art: 06019401    Sizes: 41-46    Color: Black



Art: 06019601    Sizes: 36-41    Color: Black

» Non-slip sandal. Perfect for hospitals & kitchens.



## BIRKENSTOCK TOKIO SL



Art: 06113402    Sizes: 41-46    Color: White



Art: 06113602    Sizes: 36-41    Color: White

» Non-slip sandal. Perfect for hospitals & kitchens.



## BIRKENSTOCK TOKIO SL



Art: 06119401    Sizes: 41-46    Color: Black



Art: 06119601    Sizes: 36-41    Color: Black

» Non-slip sandal. Perfect for hospitals & kitchens.





BIRKENSTOCK PROFESSIONAL

# SOFIA & KANO

# BIRKENSTOCK PROFESSIONAL



## BIRKENSTOCK SOFIA

Art: 26313302    Sizes: 36-41    Color: White



## BIRKENSTOCK KANO

Art: 50076302    Sizes: 36-41    Color: White





BIRKENSTOCK PROFESSIONAL

# ESD - SAFETY

# BIRKENSTOCK PROFESSIONAL



### BIRKENSTOCK ARIZONA ESD

REGULAR FIT

Art: 08941002    Sizes: 41-46    Color: White



### BIRKENSTOCK ARIZONA ESD

REGULAR FIT

Art: 08942001    Sizes: 41-46    Color: Black

NARROW FIT

Art: 08942801    Sizes: 35-41    Color: Black



### BIRKENSTOCK MILANO ESD

REGULAR FIT

Art: 63488002    Sizes: 41-46    Color: White

NARROW FIT

Art: 63488802    Sizes: 36-41    Color: White



### BIRKENSTOCK MILANO ESD

REGULAR FIT

Art: 63479001    Sizes: 41-46    Color: Black





BIRKENSTOCK PROFESSIONAL

# PU - SHOES | SUPER & PROFI BIRKI

# BIRKENSTOCK PROFESSIONAL



## BIRKENSTOCK PROFI BIRKI

EN ISO 20347:2012 OBE SRC

Art: 07401101    Sizes: 35-46    Color: Black

**Replaceable PU footbed**

**Perfect for the food & catering industry, kitchens & industry**

Profi Birki can be washed at 80 °C and the removable footbed at 60 °C. The footbed should be removed before washing.



## BIRKENSTOCK SUPER BIRKI

EN ISO 20347:2012 OBE SRC

Art: 06801101    Sizes: 35-46    Color: Black

**Replaceable cork footbed, art. no.: 1201127**

**Perfect for kitchens & gardens**

Super Birki can be washed at 80 °C | Footbed 30 °C



## BIRKENSTOCK SUPER BIRKI

EN ISO 20347:2012 OBE SRC

Art: 06802102    Sizes: 35-40    Color: White

**Replaceable cork footbed, art. no.: 1201127**

**Perfect for kitchens & gardens**

Super Birki can be washed at 80 °C | Footbed 30 °C







BIRKENSTOCK PROFESSIONAL

# PU - SHOES | SUPER & PROFI BIRKI

# BIRKENSTOCK

PROFESSIONAL





BIRKENSTOCK PROFESSIONAL

**Q0400 - Q0500 - Q0700**

**BIRKENSTOCK**  
PROFESSIONAL



**BIRKENSTOCK PROFESSIONAL Q0400**

EN ISO 20347:2012 02 WRU SRC

**Art:** 101124201 **Sizes:** 35-48 **Color:** Black

**FIT** Regular

**CERTIFIED** Classification 02 in accordance with EN ISO 20347:2012

**UPPER** Microfiber upper, lined with microfiber

**OUTSOLE** Outsole of non-slip (SRC) nitrile rubber

**SUPPORT** Orthopedic and removable cork footbed.

**SUITABLE FOR** Professionals in kitchens, catering, healthcare, offices

**02**



**BIRKENSTOCK PROFESSIONAL Q0400**

EN ISO 20347:2012 02 WRU SRC

**Art:** 101124302 **Sizes:** 35-48 **Color:** White

**FIT** Regular

**CERTIFIED** Classification 02 in accordance with EN ISO 20347:2012

**UPPER** Microfiber upper, lined with microfiber

**OUTSOLE** Outsole of non-slip (SRC) nitrile rubber

**SUPPORT** Orthopedic and removable cork footbed.

**SUITABLE FOR** Professionals in kitchens, catering, healthcare, offices

**02**



**BIRKENSTOCK PROFESSIONAL Q0500**

EN ISO 20347:2012 02 WRU SRC

**Art:** 101124401 **Sizes:** 35-48 **Color:** Black

**FIT** Regular

**CERTIFIED** Classification 02 in accordance with EN ISO 20347:2012

**UPPER** Leather upper, lined with microfiber

**OUTSOLE** Outsole of non-slip (SRC) nitrile rubber

**SUPPORT** Orthopedic and removable cork footbed.

**SUITABLE FOR** Professionals in kitchens, catering, healthcare, offices

**02**



**BIRKENSTOCK PROFESSIONAL Q0700**

EN ISO 20347:2012 02 WRU SRC

**Art:** 101124901 **Sizes:** 35-48 **Color:** Black

**FIT** Regular

**CERTIFIED** Classification 02 in accordance with EN ISO 20347:2012

**UPPER** Leather upper, lined with microfiber

**OUTSOLE** Outsole of non-slip (SRC) nitrile rubber

**SUPPORT** Orthopedic and removable cork footbed.

**SUITABLE FOR** Professionals in kitchens, catering, healthcare, offices

**02**



BIRKENSTOCK PROFESSIONAL

**Q0400 - Q0500 - Q0700**

**BIRKENSTOCK**  
PROFESSIONAL



**BIRKENSTOCK PROFESSIONAL Q0500**

EN ISO 20347:2012 O2 WRU SRC

Art: 101124701    Sizes: 35-48    Color: Black

- FIT** Regular
- CERTIFIED** Classification O2 in accordance with EN ISO 20347:2012
- UPPER** Microfiber upper, lined with microfiber
- OUTSOLE** Outsole of non-slip (SRC) nitrile rubber
- SUPPORT** Orthopedic and removable cork footbed.
- SUITABLE FOR** Professionals in kitchens, catering, healthcare, offices



**BIRKENSTOCK PROFESSIONAL Q0500**

EN ISO 20347:2012 O2 WRU SRC

Art: 101124802    Sizes: 35-48    Color: White

- FIT** Regular
- CERTIFIED** Classification O2 in accordance with EN ISO 20347:2012
- UPPER** Microfiber upper, lined with microfiber
- OUTSOLE** Outsole of non-slip (SRC) nitrile rubber
- SUPPORT** Orthopedic and removable cork footbed.
- SUITABLE FOR** Professionals in kitchens, catering, healthcare, offices





**NEW**



**SALOMON XA PRO GTX**

ART | 200523-01  
 Sizes | 36-49  
 Color | Black



- » Quicklace lacing system
- » Contagrip running sole
- » Gore-Tex membrane
- » Ortholite insole



**SALOMON XA PRO GTX**

ART | 200523-14  
 Sizes | 41-44  
 Color | Blue



- » Quicklace lacing system
- » Contagrip running sole
- » Gore-Tex membrane
- » Ortholite insole



### SALOMON XA PRO GTX

ART | 200523-57  
Sizes | 41-44  
Color | Blue



- » Quicklace lacing system
- » Contagrip running sole
- » Gore-Tex membrane
- » Ortholite insole



### SALOMON XA PRO GTX

ART | 200523-08  
Sizes | 41-47  
Color | Gray



- » Quicklace lacing system
- » Contagrip running sole
- » Gore-Tex membrane
- » Ortholite insole





**SALOMON OUTBOUND**

**ART** | 200582-03  
**Sizes** | 41-47  
**Color** | Blue

- » Walking shoe
- » Upper with durable mesh
- » Seamless fit
- » Contagrip outsole
- » Ortholite insole



**SALOMON OUTBOUND**

**ART** | 200582-12  
**Sizes** | 36-40  
**Color** | Gray



- » Walking shoe
- » Upper with durable mesh
- » Seamless fit
- » Contagrip outsole
- » Ortholite insole



**SALOMON SENSE FEEL**

**ART** | 200581-00  
**Sizes** | 36-47  
**Color** | Gray

- » Well-cushioned running shoe
- » Seamless fit
- » Contagrip running sole
- » Ortholite insole
- » Quicklace



**SALOMON OUTBOUND**

**ART** | 200582-29  
**Sizes** | 41-47  
**Color** | Blue

- » Walking shoe
- » Upper with durable mesh
- » Seamless fit
- » Contagrip outsole
- » Ortholite insole



**NEW**



**NEW**

### SALOMON X REVEAL GTX

**ART** | 200583-04  
**Sizes** | 41-47  
**Color** | Green

- » Soft walking shoe
- » Mesh and textile upper
- » Gore-Tex membrane
- » Contagrip walking outsole
- » Ortholite insole

### SALOMON X REVEAL GTX

**ART** | 200583-81  
**Sizes** | 36-40  
**Color** | Pink



- » Soft walking shoe
- » Mesh and textile upper
- » Gore-Tex membrane
- » Contagrip walking outsole
- » Ortholite insole





**SALOMON XA DISCOVERY GTX**

**ART** | 200578-03  
**Sizes** | 41-47  
**Color** | Blue



- » Walking shoe
- » Gore-Tex membrane
- » Contagrip outsole with tread pattern
- » Vibe system for maximum cushioning
- » SensiFit
- » Quicklace lacing system



**SALOMON AMPHIB BOLD**

**ART** | 200580-02  
**Sizes** | 36-39  
**Color** | White



- » Running and walking shoe
- » Breathable and quick-drying mesh
- » Built-up sole for stability and cushioning
- » Wet Traction rubber compound for wet surfaces
- » Collapsible heel
- » Equipped with Salomon Quicklace.







### **SALOMON** CROSSAMPHIBIAN SWIFT

<b>ART</b>	200571-03
<b>Sizes</b>	41-47
<b>Color</b>	Black / Blue

- » Running shoe that is great on land and in the water
- » Quick-drying mesh upper with a tight fit
- » Built-up sole that provides good stability
- » Wet Traction Contagrip® for wet surfaces.



### **SALOMON** CROSSAMPHIBIAN SWIFT

<b>ART</b>	200571-58
<b>Sizes</b>	42-47
<b>Color</b>	Green / Yellow

- » Running shoe that is great on land and in the water
- » Quick-drying mesh upper with a tight fit
- » Built-up sole that provides good stability
- » Wet Traction Contagrip® for wet surfaces.





### SALOMON XA TICA0 GTX

**ART** | 200564-01  
**Sizes** | 36-47  
**Color** | Black



- » Walking shoe
- » Mesh and textile upper
- » Gore-Tex membrane
- » Pronation support
- » Contagrip walking outsole
- » Ortholite insole



### SALOMON SPEEDCROSS

**ART** | 200526-01  
**Sizes** | 36-46  
**Color** | Black

- » Running shoe
- » Contagrip outsole with rubber studs
- » Ortholite insole
- » Quicklace lacing system





**NEW**

**SALOMON ALPHACROSS BLAST**

**ART** | 200576-08  
**Sizes** | 36-40  
**Color** | Gray



- » Running shoe
- » Contagrip® outsole ready for any surface.
- » Mesh upper
- » The EnergyCell midsole absorbs impact shock as you run.
- » Ortholite insole



**SALOMON ALPHACROSS BLAST**

**ART** | 200576-01  
**Sizes** | 41-47  
**Color** | Black

- » Running shoe
- » Contagrip® outsole ready for any surface.
- » Mesh upper
- » The EnergyCell midsole absorbs impact shock as you run.
- » Ortholite insole



**SALOMON ALPHACROSS BLAST**

**ART NR** | 200576-07  
**Sizes** | 36-40  
**Color** | Maroon



- » Running shoe
- » Contagrip® outsole ready for any surface.
- » Mesh upper
- » The EnergyCell midsole absorbs impact shock as you run.
- » Ortholite insole



### SALOMON DEEMAX TS WP

ART | 200543-01  
 Sizes | 43-45  
 Color | Black



- » Practical half boot in seamless Softshell Dry.
- » Quick-lacing and Velcro fastening
- » CS membrane that waterproofs the whole shoe.
- » Thinsulate insulation keeps your feet warm (-12).
- » Contagrip winter outsole for slippery surfaces.



### SALOMON OUTLINE MID GTX

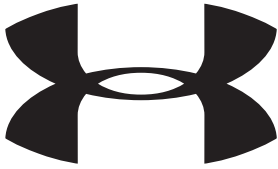
ART | 200575-82  
 Sizes | 41-47  
 Color | Black / Green



- » Unlined half boot
- » Gore-Tex membrane
- » Ortholite insole for high comfort
- » Contagrip outsole with 5 mm rubber studs for good grip
- » Upper with durable mesh and reinforced toe box







**UNDER ARMOUR.**



**NEW**

**UNDER ARMOUR CHARGED BANDIT 6**

<b>ART</b>	300815-55
<b>Sizes</b>	41-47
<b>Color</b>	Black

- » Neutral, lightweight running shoe
- » Lightweight mesh upper with film coating
- » Charged Cushioning® in the midsole
- » Removable insole
- » Outsole with durable rubber
- » Drop: 8 mm



**NEW**

**UNDER ARMOUR CHARGED BANDIT 6**

<b>ART</b>	300815-23
<b>Sizes</b>	41-47
<b>Color</b>	White

- » Neutral, lightweight running shoe
- » Lightweight mesh upper with film coating
- » Charged Cushioning® in the midsole
- » Removable insole
- » Outsole with durable rubber
- » Drop: 8 mm



**UNDER ARMOUR CHARGED BANDIT 6**

<b>ART</b>	300815-00
<b>Sizes</b>	36-47
<b>Color</b>	Black

- » Neutral, lightweight running shoe
- » Lightweight mesh upper with film coating
- » Charged Cushioning® in the midsole
- » Removable insole
- » Outsole with durable rubber
- » Drop: 8 mm



**NEW**

**UNDER ARMOUR CHARGED BANDIT 6**

<b>ART</b>	300815-02
<b>Sizes</b>	36-40
<b>Color</b>	White

- » Neutral, lightweight running shoe
- » Lightweight mesh upper with film coating
- » Charged Cushioning® in the midsole
- » Removable insole
- » Outsole with durable rubber
- » Drop: 8 mm





NEW

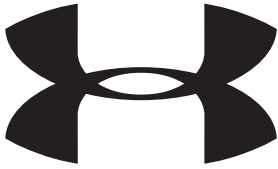


### UNDER ARMOUR CHARGED PURSUIT

ART | 300819-01  
Sizes | 36-47  
Color | Black

- » For training and everyday wear
- » Charged Cushioning® in the midsole
- » Knitted mesh upper
- » Outsole with durable rubber





**UNDER ARMOUR.**



**UNDER ARMOUR RIPPLE**

**ART** | 300809-42  
**Sizes** | 36-41  
**Color** | Black / Purple



- » A lightweight shoe suitable for training and everyday wear.
- » Coarse mesh upper and EVA outsole.
- » The heel loop makes it easy to slip on.



**UNDER ARMOUR RIPPLE**

**ART** | 300809-55  
**Sizes** | 41-47  
**Color** | Black / Red

- » A lightweight shoe suitable for training and everyday wear.
- » Coarse mesh upper and EVA outsole.
- » The heel loop makes it easy to slip on.



**UNDER ARMOUR RIPPLE**

**ART** | 300809-03  
**Sizes** | 41-47  
**Color** | Blue

- » A lightweight shoe suitable for training and everyday wear.
- » Coarse mesh upper and EVA outsole.
- » The heel loop makes it easy to slip on.



**UNDER ARMOUR RIPPLE**

**ART** | 300809-04  
**Sizes** | 41-47  
**Color** | Green

- » A lightweight shoe suitable for training and everyday wear.
- » Coarse mesh upper and EVA outsole.
- » The heel loop makes it easy to slip on.





**NEW**

### UNDER ARMOUR COMMIT

**ART** | 300824-01  
**Sizes** | 41-47  
**Color** | Black

- » Training shoe
- » Lightweight mesh and leather upper with excellent ventilation.
- » Midsole with energy-providing Charged Cushioning®
- » Outsole with durable rubber
- » 8 mm drop



### UNDER ARMOUR AURA TRAINER

**ART** | 300814-02  
**Sizes** | 36-40  
**Color** | White

*Lady*

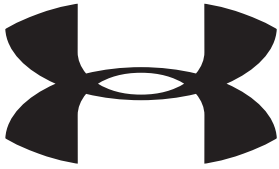
- » Training shoe.
- » Lightweight mesh upper for superior ventilation.
- » Extra foam in the heel and tongue for comfort and a good fit.
- » The high-density Micro G® midsole provides stability and comfort.
- » Removable insole.
- » Non-marking outsole.
- » Drop: 6 mm, 198 g



### UNDER ARMOUR CHARGED PULSE

**ART** | 300817-51  
**Sizes** | 41-47  
**Color** | Blue

- » Neutral, lightweight running shoe
- » Lightweight mesh upper with film coating
- » Charged Cushioning® in the midsole
- » Removable insole
- » Outsole with durable rubber



**UNDER ARMOUR.**



### UA SWEATER

<b>ART</b>	300907-01
<b>Sizes</b>	S-XXL
<b>Color</b>	Black

- » Compression top with long sleeves
- » The double layer of ColdGear material retains heat and wicks moisture away.
- » Collar with UA logo for protection and warmth



### UA SHORT-SLEEVE SHIRT

<b>ART</b>	300913-01
<b>Sizes</b>	XS-XL
<b>Color</b>	Black



- » Super-lightweight HeatGear® material provides breathability.
- » Signature Moisture Transport System offers effective moisture wicking.
- » 4-way stretch increases mobility.
- » Fitted design.



### UA TIGHT TECH TEE

<b>ART</b>	300909-01
<b>Sizes</b>	S-XXL
<b>Color</b>	Black

- » UA Tech™ material for exceptional comfort, both at the gym and in everyday wear
- » Tight fit





## UA CAP

<b>ART</b>	300910-03
<b>Sizes</b>	M/L, L/XL
<b>Color</b>	Blue

- » Stretch fit and curved visor.
- » Embroidered Under Armour logo
- » HeatGear® material.
- » Contains polyester and elastane



## UA CAP

<b>ART</b>	300910-01
<b>Sizes</b>	M/L, L/XL
<b>Color</b>	Black

- » Stretch fit and curved visor.
- » Embroidered Under Armour logo
- » HeatGear® material.
- » Contains polyester and elastane



# SALMING.



## SALMING EAGLE

ART	300705-01
Sizes	41-47
Color	Black

- » Training shoe for all types of indoor sports
- » KPU-reinforced upper which provides stability and added durability
- » Outsole with asymmetrical Hexagrip tread



## SALMING GREYHOUND

ART	300700-16
Sizes	36-40
Color	Turquoise



- » Neutral running shoe.
- » Mesh upper.
- » The Recoil PLUS midsole gives your steps more energy.
- » Vibram outsole.
- » 6 mm drop.



## SALMING EAGLE

ART	300705-02
Sizes	36-40
Color	White



- » Training shoe for all types of indoor sports
- » KPU-reinforced upper which provides stability and added durability
- » Outsole with asymmetrical Hexagrip tread



## SALMING GREYHOUND

ART	300700-23
Sizes	41-47
Color	White



- » Neutral running shoe.
- » Mesh upper.
- » The Recoil PLUS midsole gives your steps more energy.
- » Vibram outsole.
- » 6 mm drop.



### SALMING SPEED 7

**ART** | 300702-02  
**Sizes** | 37-40  
**Color** | White



- » Running shoe with mesh upper.
- » RECOIL\* midsole. SoftFOAM\* in the heel section, which provides 70% more shock absorption than standard EVA.
- » Upper with reflective details.
- » 6 mm drop, 220 g



### SALMING BOLD PRINT TEE

**ART** | 300502-75  
**Sizes** | S-XXL  
**Color** | Red

- » Training t-shirt in soft and thin polyester mesh that keeps you cool and dry.





**NEW**



## BJÖRN BORG T305 LOW

<b>ART</b>	200715-02
<b>Sizes</b>	36-46
<b>Color</b>	White

- » Trendy sneaker
- » Synthetic leather upper, fabric lining.
- » Rubber outsole.

## BJÖRN BORG T305 LOW

<b>ART</b>	200701-02
<b>Sizes</b>	40-46
<b>Color</b>	White

- » Trendy sneaker with blue strip along the heel.
- » Synthetic leather upper, fabric lining.
- » Rubber outsole.



## BB T-SHIRT LOGO

<b>ART</b>	200208-01
<b>Sizes</b>	S-XXL
<b>Color</b>	Black

- » Training t-shirt
- » Regular fit
- » Fast-drying Hydro Pro material
- » 90% polyester, 10% elastane



## BB T-SHIRT LOGO

<b>ART</b>	200208-02
<b>Sizes</b>	S-XXL
<b>Color</b>	White

- » Training t-shirt
- » Regular fit
- » Fast-drying Hydro Pro material
- » 90% polyester, 10% elastane



## BB SHORTS LOGO

<b>ART</b>	200209-01
<b>Sizes</b>	S-XXL
<b>Color</b>	Black

- » Björn Borg shorts
- » Fast-drying Hydro Pro material
- » Side and inner pockets
- » 5 cm wide elastic band with logo.
- » 92% polyester, 8% elastane



NEW

### BJÖRN BORG R130

ART	200713-03
Sizes	40-46
Color	Blue

- » Sneaker model with sporty profile
- » Knitted textile upper
- » Rubber outsole



### BJÖRN BORG X200 LOW

ART	200700-01
Sizes	36-46
Color	Black

- » Very lightweight and flexible shoe with a sporty look.
- » Textile upper.
- » Phylon outsole.



NEW

### BJÖRN BORG TOILET CASE

ART	200291-01
Sizes	B 26 cm, H 16 cm, D 12 cm
Color	Black

- » Polyester toilet case
- » Three compartments inside



NEW

### BJÖRN BORG BACKPACK

ART	200290-01
Sizes	B 32 cm, H 44 cm, D 20 cm
Color	Black

- » Polyester backpack
- » Main compartment with double zipper pullers
- » Padded shoulder straps and back panel
- » Concealed front zipper pocket
- » Neoprene pocket for digital devices



## BJÖRN BORG HENRY

ART	200704-01
Sizes	41-47
Color	Black

- » A comfortable sneaker with nylon and leather upper
- » Rubber outsole.



## BJÖRN BORG GEOFF CHAPA

ART	200703-03
Sizes	41-47
Color	Blue

- » Sneaker with a sporty look.
- » Leather and textile upper.
- » Rubber outsole.



## BJÖRN BORG COLTRANE

ART	200702-05
Sizes	41-47
Color	Brown

- » Heavy-duty sneaker
- » Suede and leather upper
- » Rubber outsole



## BJÖRN BORG COLTRANE

ART	200702-10
Sizes	41-47
Color	Brown

- » Heavy-duty sneaker
- » Suede and leather upper
- » Rubber outsole

**NEW**





### BJÖRN BORG ALRIK

ART	200710-01
Sizes	41-47
Color	Black

- » Heavy-duty high-top sneaker
- » Leather upper
- » Rubber outsole



### BJÖRN BORG JENS

ART	200711-01
Sizes	41-47
Color	Black

- » Boot in soft leather with elastic inserts
- » Rubber outsole



### BJÖRN BORG ALEC MID FUR

ART	200706-05
Sizes	41-47
Color	Brown

- » Sneaker model
- » Half boot
- » Waxed suede and leather upper
- » Lined with faux fur
- » Rubber outsole



### BJÖRN BORG MARTYN MID FUR

ART	200712-01
Sizes	41-47
Color	Black

- » Sneaker model
- » Half boot
- » Leather upper
- » Lined with faux fur
- » Rubber outsole



## BB BOXER COTTON 3-PACK

**ART** | 200201-01  
**Sizes** | S-XXL  
**Color** | Black

- » Boxer briefs with a snug fit
- » 3-pack boxer briefs
- » 95% cotton, 5% elastane
- » Mid-rise waist, longer leg length
- » 3 cm elastic with Björn Borg logo.



## BB BOXER COTTON 3-PACK

**ART** | 200201-03  
**Sizes** | S-XXL  
**Color** | Blue

- » Boxer briefs with a snug fit
- » 3-pack boxer briefs
- » 95% cotton, 5% elastane
- » Mid-rise waist, longer leg length
- » 3 cm elastic with Björn Borg logo.



## BB BOXER COTTON 5-PACK

**ART** | 200202-01  
**Sizes** | S-XXL  
**Color** | Black

- » Boxer briefs with a snug fit
- » 5-pack boxer briefs
- » 95% cotton, 5% elastane
- » Mid-rise waist, longer leg length
- » 3 cm elastic with Björn Borg logo.



## BB BOXER COTTON 5-PACK

**ART** | 200202-03  
**Sizes** | S-XL  
**Color** | MIX

- » Boxer briefs with a snug fit
- » 5-pack boxer briefs
- » 95% cotton, 5% elastane
- » Mid-rise waist, longer leg length
- » 3 cm elastic with Björn Borg logo.



**NEW**

## BB BOXER PANEL 1-PACK

**ART** | 200213-01  
**Sizes** | S-XXL  
**Color** | Black

- » Mid-rise waist
- » Stretchy polyamide
- » Moisture-wicking Hydro Pro material
- » Flat seams to prevent chafing
- » 3.5 cm wide elastic waist with logo
- » 90% recycled polyester, 10% elastane



**NEW**

## BB BOXER DIGITAL 1-PACK

**ART** | 200214-04  
**Sizes** | S-XXL  
**Color** | Green

- » Mid-rise waist
- » Stretchy polyamide
- » Moisture-wicking Hydro Pro material
- » Flat seams to prevent chafing
- » 3.5 cm wide elastic waist with logo
- » 90% recycled polyester, 10% elastane



### BB BOXER CAMO 1-PACK

<b>ART</b>	200203-01
<b>Sizes</b>	S-XXL
<b>Color</b>	Black

- » Mid-rise waist
- » Stretchy polyamide
- » Moisture-wicking Hydro Pro material
- » Flat seams to prevent chafing
- » 3.5 cm wide elastic waist with logo
- » 88% polyamide, 12% elastane



### BB BOXER CAMO 1-PACK

<b>ART</b>	200203-03
<b>Sizes</b>	S-L
<b>Color</b>	Blue

- » Mid-rise waist
- » Stretchy polyamide
- » Moisture-wicking Hydro Pro material
- » Flat seams to prevent chafing
- » 3.5 cm wide elastic waist with logo
- » 88% polyamide, 12% elastane



### BB SOCKS 5-PACK

<b>ART</b>	200204-01
<b>Sizes</b>	41/45
<b>Color</b>	Black

- » Björn Borg logo on the underside
- » Suitable for training and everyday wear.
- » 60% cotton, 30% polyester, 8% polyamide, 2% elastane



### BB SOCKS 3-PACK

<b>ART</b>	200205-02
<b>Sizes</b>	35/38 39/42, 43/46
<b>Color</b>	White

- » 3-pack ankle socks
- » Björn Borg logo on the ankle
- » Suitable for training and everyday wear.
- » 65% cotton, 33% polyester, 2% elastane



### BB SOCKS 3-PACK

<b>ART</b>	200205-01
<b>Sizes</b>	35/38 39/42, 43/46
<b>Color</b>	Black

- » 3-pack ankle socks
- » Björn Borg logo on the ankle
- » Suitable for training and everyday wear.
- » 65% cotton, 33% polyester, 2% elastane



### BB HIPSTERS HATTIE 1-P

<b>ART</b>	200210-01
<b>Sizes</b>	XS-XL
<b>Color</b>	Black



- » Comfortable and soft
- » Tight fit
- » Seamless
- » 71% polyamide, 29% elastane



### BB BOXER PRINT 1-PACK

<b>ART</b>	200211-51
<b>Sizes</b>	M-XXL
<b>Color</b>	MIX

- » Mid-rise waist
- » Stretchy polyamide
- » Moisture-wicking Hydro Pro material
- » Flat seams to prevent chafing
- » 3.5 cm wide elastic waist with logo
- » 88% polyamide, 12% elastane



### BB BOXER PRINT 1-PACK

<b>ART</b>	200211-01
<b>Sizes</b>	S-XXL
<b>Color</b>	Black

- » Mid-rise waist
- » Stretchy polyamide
- » Moisture-wicking Hydro Pro material
- » Flat seams to prevent chafing
- » 3.5 cm wide elastic waist with logo
- » 88% polyamide, 12% elastane



**NEW**



**PUMA SUTAMINA SPEED**

**ART** | 200903-79  
**Sizes** | 41-47  
**Color** | Black

- » Neutral running shoe
- » Replaceable Softfoam insole
- » Mesh upper with reflective details
- » PROFOAM midsole that adds energy to your step
- » Speedtraction outsole for optimal grip



**PUMA SUTAMINA SPEED**

**ART** | 200903-01  
**Sizes** | 41-47  
**Color** | Black

- » Neutral running shoe
- » Replaceable Softfoam insole
- » Mesh upper with reflective details
- » PROFOAM midsole that adds energy to your step
- » Speedtraction outsole for optimal grip



**PUMA SUTAMINA SPEED**

**ART** | 200903-54  
**Sizes** | 36-40  
**Color** | Black / Pink

- » Neutral running shoe
- » Replaceable Softfoam insole
- » Mesh upper with reflective details
- » PROFOAM midsole that adds energy to your step
- » Speedtraction outsole for optimal grip





**NEW**



**PUMA SERVE PRO**

<b>ART</b>	200907-02
<b>Sizes</b>	39-47
<b>Color</b>	White

- » Classic sneaker
- » Leather, suede & synthetic upper
- » Rubber outsole

**NEW**



**PUMA SERVE PRO**

<b>ART</b>	200907-37
<b>Sizes</b>	36-41
<b>Color</b>	White

- » Classic sneaker
- » Leather, suede & synthetic upper
- » Rubber outsole





### PUMA SPEED 600

<b>ART</b>	200901-01
<b>Sizes</b>	41-47
<b>Color</b>	Black

- » Neutral running shoe
- » Replaceable Softfoam insole
- » Mesh upper with reflective details
- » HYBRID foam midsole for cushioning, while the bottom layer with PROFOAM adds energy to your step.
- » Speedtraction outsole for optimal grip



### PUMA SPEED 600

<b>ART</b>	200901-17
<b>Sizes</b>	36-40
<b>Color</b>	Pink



- » Neutral running shoe
- » Replaceable Softfoam insole
- » Mesh upper with reflective details
- » HYBRID foam midsole for cushioning, while the bottom layer with PROFOAM adds energy to your step.
- » Speedtraction outsole for optimal grip



### PUMA SPEED 500

<b>ART</b>	200902-64
<b>Sizes</b>	41-47
<b>Color</b>	Yellow

- » Neutral, lightweight running shoe
- » Replaceable Softfoam insole
- » Breathable mesh upper with metatarsal support
- » PROFOAM midsole that adds energy to your step
- » Speedtraction outsole for optimal grip



### PUMA COURT LEGEND LOW

<b>ART</b>	200905-01
<b>Sizes</b>	36-47
<b>Color</b>	Black

- » Retro sneaker
- » Replaceable Softfoam insole
- » Leather and suede upper.
- » Rubber outsole



**NEW**

### PUMA SOFTRIDE VITAL REPEL

<b>ART</b>	200908-01
<b>Sizes</b>	41-47
<b>Color</b>	Black

- » Light shoe with a slightly wider fit
- » Softfoam insole from heel to toe
- » PUMA's softest shoe, 17% softer than standard EVA
- » Shock absorption that spares your feet and knees.
- » Water-repellent



**NEW**

### PUMA SOFTRIDE VITAL REPEL

<b>ART</b>	200908-12
<b>Sizes</b>	36-40
<b>Color</b>	Gray



- » Light shoe with a slightly wider fit
- » Softfoam insole from heel to toe
- » PUMA's softest shoe, 17% softer than standard EVA
- » Shock absorption that spares your feet and knees.
- » Water-repellent

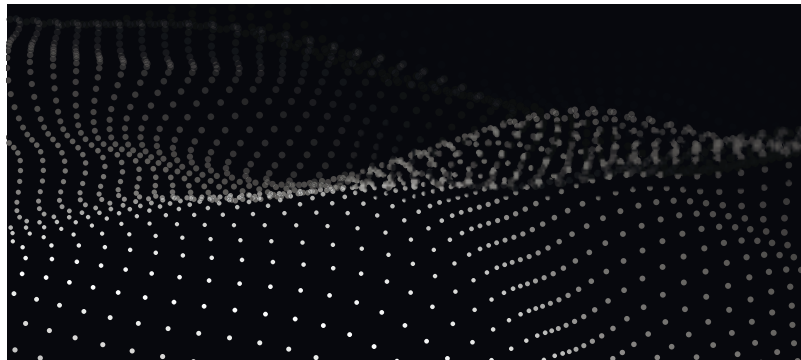


### PUMA ELATE NRGY

<b>ART</b>	200904-01
<b>Sizes</b>	36-47
<b>Color</b>	Black

- » Neutral running shoe
- » Replaceable Softfoam insole
- » NRGY midsole for outstanding cushioning
- » Rubber outsole





## REEBOK TIME & HALF

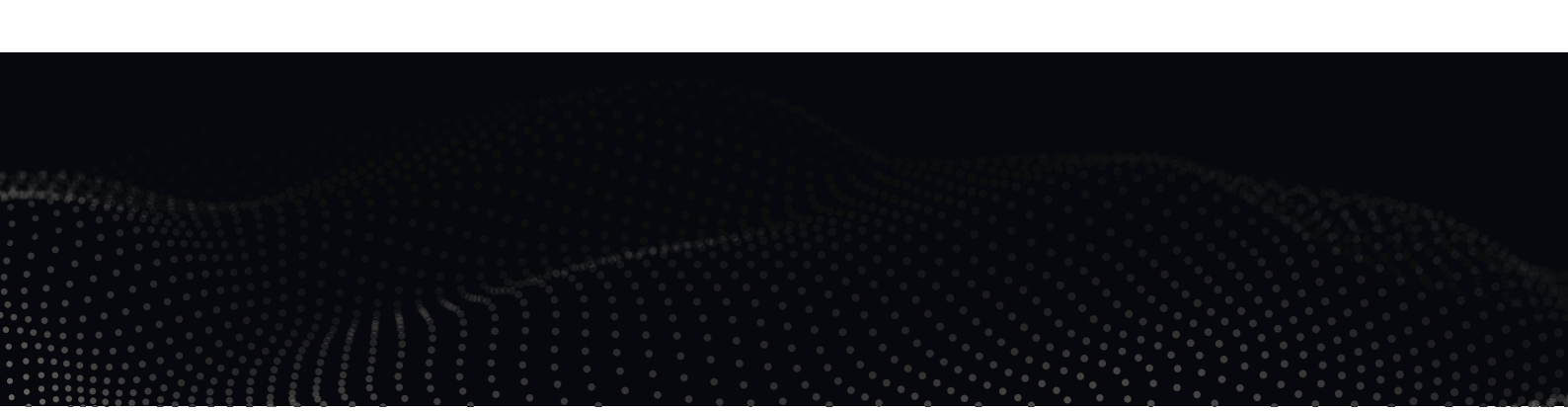
ART	300618-01
Sizes	35-47
Color	Black

**DMX**

- » Walking/occupational shoe
- » Artificial leather upper.
- » Features DMX ride cushioning.
- » Non-slip and oil-resistant outsole.

# TIME & HALF





**Reebok** 

# LLOYD

GERMANY



## LLOYD MILAN

ART	200446-01
Sizes	40-47
Color	Black

- » From Lloyd's X-Motion series, which offers a combination of dress shoe/sports shoe
- » Cushioning, removable insole with gel.
- » Extra-soft suede and outsole.
- » The outsole is made from a durable rubber compound.
- » Suitable as a dress shoe as well as a casual shoe.



## LLOYD OSMOND

ART	200441-05
Sizes	40-47
Color	Brown

- » Leather-lined calfskin upper.
- » Genuine leather insole
- » Well-constructed arch support
- » The outsole is made from a durable rubber compound
- » Suitable as a dress shoe as well as a casual shoe.



## LLOYD OSMOND

ART	200441-01
Sizes	40-47
Color	Black

- » Leather-lined calfskin upper.
- » Genuine leather insole
- » Well-constructed arch support
- » The outsole is made from a durable rubber compound
- » Suitable as a dress shoe as well as a casual shoe.

**LLOYD**

GERMANY





### IRONMAN GEL TRIPPLE DENSITY

<b>ART</b>	800205-03	» TPR = Thermoplastic rubber/gel
	36-48	» Triple-density gel
	7 double sizes	» Built-up heel

Ironman All Sport is the ideal insole for anyone who needs greater shock absorption as well as a stable, built-up sole. All Sport has gel pads in the heel and under the forefoot and has a stable TPU shank at the back of the sole. All Sport also has built-up arch support and meta-tarsal arch support for the medial arch.



### IRONMAN GEEL HEEL

<b>ART</b>	800204-03	» TPR = Thermoplastic rubber/gel
	ONE SIZE	» Dual-density gel
		» Non-slip function

Ironman's Gel Heel provides excellent cushioning as well as a comfortable feel. Gel Heel works best in shoes with narrower fronts, e.g. dress shoes. Gel Heel is designed to be non-slip and remains in place under the heel all day.

**IRONMAN**<sup>®</sup>



# ACCESSORIES

NEW



## FELT INSOLE

ART 800132-12  
Sizes 35-47

» Hygienic thin and supple felt insole to keep feet warm and dry.



## ALU IGLOO INSOLE

ART 800189  
Sizes 35-47

» Warm and highly insulating insole made of felt and aluminum

## MONIFRESH - SKUNK BUSTER

ART 800333  
Sizes ONESIZE

» Deodorizing pouches that absorb moisture, eliminate odor and leave a fresh scent.



## SPORT INSOLE 2GO

ART 800133-01  
Sizes 35-47

» Molded insole for sports and casual shoes.  
» Provides additional heel and arch support.  
» Insulates against the cold and wet.



## BIRKENSTOCK FOOTBED

ART 010001 - REGULAR FIT  
ART 010002 - NARROW FIT  
Sizes 35-47

» Orthopedic-style cork footbed.  
» Provides relief and support.  
» Fits all shoes.



## LEATHER LACE ON ROLL

ART 800089  
Sizes 50 M



## LAMBSWOOL INSOLE

ART 800136-10  
Sizes 35-47

» The ideal winter insole. Lambswool with an underside of wool felt.



## OURALINE SAPHIR RUB

ART 800304  
Sizes 100 ML

» Wild boar grease for care and impregnation.  
» Effective impregnation.



## LEATHER LACE ON ROLL

ART 800088  
Sizes 50 M

# ACCESSORIES

---



## SHOE DEODORANT

---

ART 800094  
Sizes 100 ML

---

» YocoAir shoe deodorant



## PROTECTOR

---

ART 800302  
Sizes 250 ML

---

» Leather impregnation spray that protects your shoes and extends their life



## SHOE CREAM FOR LEATHER

---

ART 800301  
Sizes 75 ML

---

» Protects and strengthens leather shoes.



## SHOE BRUSH

---

ART 800116  
Sizes ONESIZE

---

» Brush for suede and nubuck.



## SHOE BRUSH

---

ART 800101  
Sizes ONESIZE

---

» Double-sided wooden shoe brush.



## SHOE POLISH

---

ART 800303  
Sizes ONESIZE

---

» Shoe polish.



## MEASURING STICK WOOD

---

ART 800123  
Sizes ONESIZE

---

» Size measuring stick with conversion chart.



## MEASURING STICK IN-SHOE

---

ART 800122  
Sizes ONESIZE

---

» Measuring stick for in-shoe measurement.



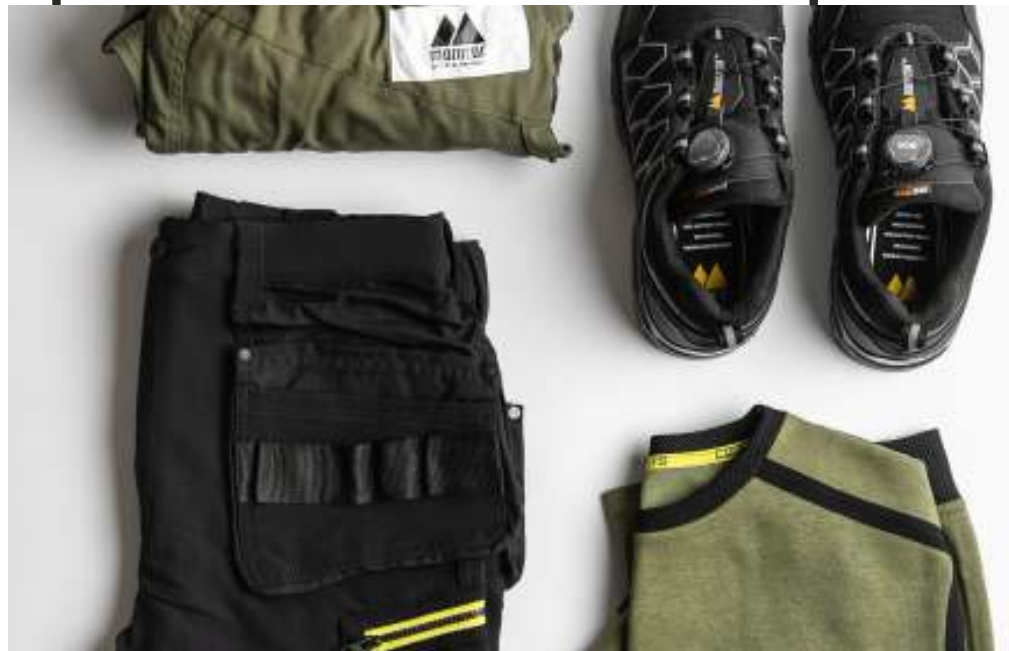
## MONITOR SHOE HORN

---

ART 800109  
Sizes 53 CM

---

» Monitor shoe horn.





# FOLLOW OUR JOURNEY



facebook.com/**monitorbrand**  
instagram.com/**monitorbrand**

#**monitorbrand**







**SALES MANAGER SWEDEN**  
Johan Thuresson  
070-667 89 04  
johan.thuresson@bastadgruppen.se

**1** **AREA SALES**  
Markus Winqvist  
070-695 54 25  
markus.winqvist@bastadgruppen.se

**2** **AREA SALES**  
Pierre Jaderlöw  
070-953 23 22  
pierre.jaderlow@bastadgruppen.se

**3** **AREA SALES**  
Rolf Jansson  
070-667 89 67  
rolf.jansson@bastadgruppen.se

**3** **AREA SALES**  
Linus Ljunggren  
073-095 78 30  
linus.ljunggren@bastadgruppen.se

**4** **AREA SALES**  
Magnus Forssten  
070-225 16 09  
magnus.forssten@bastadgruppen.se

**5** **AREA SALES**  
David Hamre  
+47 (0)902 83 901  
david.hamre@bastadnorge.no

**6** **AREA SALES**  
Madelen W. Ramsfjell  
+47 (0)93 43 33 52  
madelen.ramsfjell@bastadnorge.no

**7** **AREA SALES**  
Fredrik Magnusson  
+ 47 (0) 942 57 672  
fredrik.magnusson@bastadnorge.no

**8** **SALES MANAGER WESTERN EUROPE**  
Filipe Francisco  
+351 962 519 502  
filipe.francisco@bastadgruppen.com

**9** **SALES MANAGER DENMARK, ICELAND, FINLAND & EASTERN EUROPE**  
Lars Raunkjær  
+45 31 400 002  
+420-725907988  
lars.raunkjaer@bastadgruppen.com



**BÅSTAD GRUPPEN AB**  
BOX 1031, SE-262 21 Ängelholm, Sweden  
Tel. +46 431-732 00, Fax +46 431-730 95



**HEAD OFFICE / VISITING ADDRESS**  
Fraktgatan 1, SE-262 73 Ängelholm, Sweden



**OFFICE/CUSTOMER SUPPORT**  
Tel. +46 431-732 00, Fax +46 431-730 95  
info@bastadgruppen.com



monitorbrand.com

WE ARE  
**MONITOR**

**DISTRIBUTORS:**

**BÅSTAD GRUPPEN AB**  
BOX 1031, SE-262 21 ÄNGELHOLM, SWEDEN  
TEL. 0431-732 00, FAX 0431- 730 95

info@bastadgruppen.com , www.bastadgruppen.com